

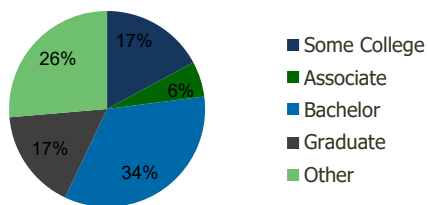
103840-Charlotte Sports & Fitness Ctr Charlotte, NC	1.00 Mile Radius	3.00 Mile Radius	5.00 Mile Radius	10.00 Mile Radius
--	---------------------	---------------------	---------------------	----------------------

Demographics (2021)

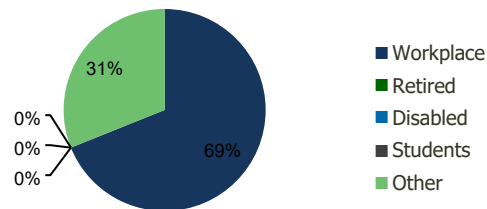
Current Population	9,674	93,892	215,546	769,778
Total Daytime Pop	23,562	151,579	444,979	985,565
Workplace Pop	19,237	104,467	305,900	560,197
Average Household Income	\$80,105	\$110,913	\$126,164	\$105,577
Median Household Income	\$62,315	\$72,236	\$79,398	\$70,989
Total Housing Units	3,967	41,089	95,996	312,459
Median Home Value	\$360,289	\$389,362	\$455,704	\$359,607
Bachelors Degree	29.0%	34.1%	35.7%	29.6%
Graduate Degree	10.9%	16.6%	20.0%	15.6%

Projections (2026)

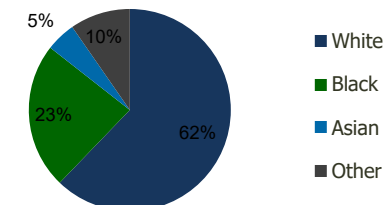
Projected Population	9,993	99,035	231,340	822,330
Projected 5 Year Pop Growth	0.7%	1.1%	1.4%	1.3%
Projected Households	4,089	43,408	104,158	335,061
Projected 5 Year Household Growth	0.6%	1.1%	1.6%	1.4%



Education (3-Mile)



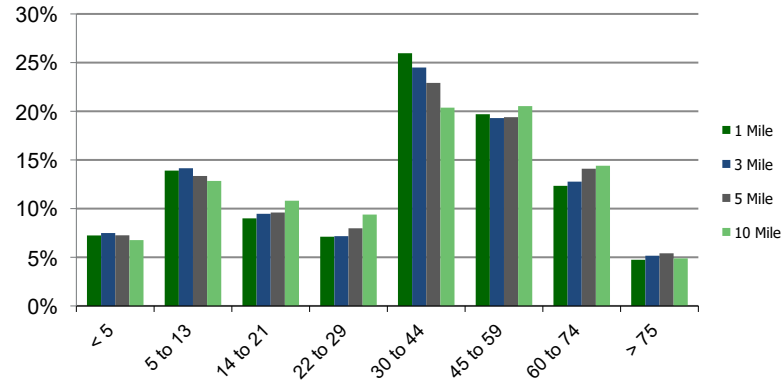
Daytime Population (3-Mile)



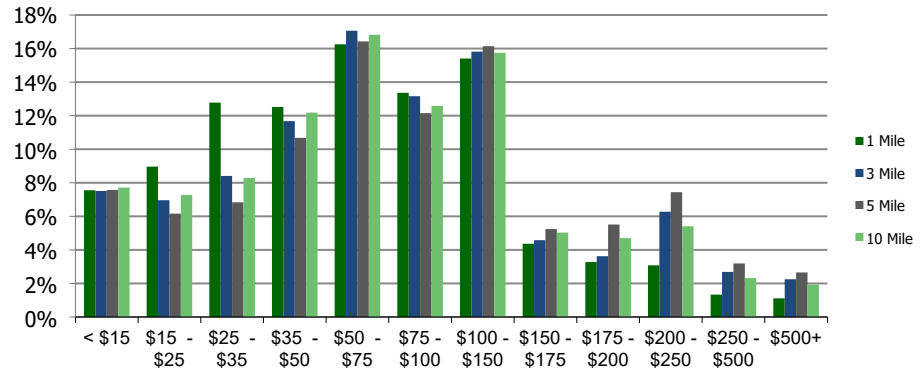
Ethnicity (3-Mile)

This report was produced using data from private and government sources deemed to be reliable and is herein provided without representation or warranty.

Population by Age Range



Household Income by Income Range (\$000)



103840-Charlotte Sports & Fitness Charlotte, NC	1.00 Mile Radius	3.00 Mile Radius	5.00 Mile Radius	10.00 Mile Radius
--	-----------------------------	-----------------------------	-----------------------------	------------------------------

Population	Current Estimated Population	9,674	93,892	215,546	769,778
	2010 Census Population	8,915	77,324	172,145	622,201
	2000 Census Population	8,846	71,460	157,274	513,700
	Historical Annual Growth 2000 to 2010	0.08%	0.79%	0.91%	1.93%
	Estimated Annual Growth 2010 to 2020	0.70%	1.67%	1.93%	1.83%
	Projected Annual Growth 2020 to 2025	0.65%	1.07%	1.42%	1.33%
Households	Current Estimated Households	3,967	41,089	95,996	312,459
	2010 Census Households	3,698	33,451	74,634	250,147
	2000 Census Households	3,589	31,527	67,449	206,459
	Historical Annual Growth 2000 to 2010	0.3%	0.6%	1.0%	1.9%
	Estimated Annual Growth 2010 to 2020	0.6%	1.8%	2.2%	1.9%
	Projected Annual Growth 2020 to 2025	0.6%	1.1%	1.6%	1.4%
	Population per Household	2.4	2.3	2.2	2.4
Ethnicity	White	64.1%	62.2%	63.9%	55.7%
	Black or African American	16.9%	23.4%	24.9%	29.7%
	Asian & Pacific Islander	4.7%	4.8%	4.2%	5.5%
	Other Races	14.2%	9.7%	7.0%	9.2%
	Hispanic or Latino Population	38.6%	20.7%	13.1%	13.6%
	Non Hispanic or Latino Population	61.4%	79.3%	86.9%	86.4%

This report was produced using data from private and government sources deemed to be reliable and is herein provided without representation or warranty.