

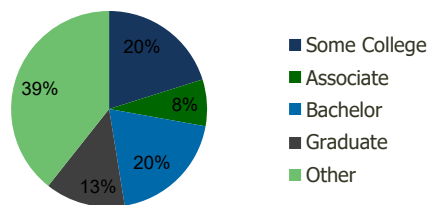
109200-Smoketown Station-Block 6 Woodbridge, VA	1.00 Mile Radius	3.00 Mile Radius	5.00 Mile Radius	10.00 Mile Radius
----------------------------------------------------	---------------------	---------------------	---------------------	----------------------

## Demographics (2020)

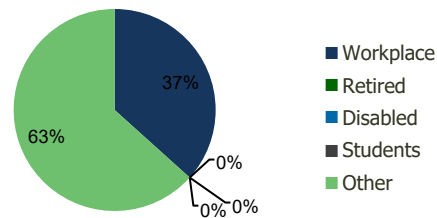
Current Population	7,486	134,868	236,690	464,628
Total Daytime Pop	18,705	111,902	178,004	382,124
Workplace Pop	11,941	41,025	55,062	138,379
Average Household Income	\$97,720	\$105,112	\$118,188	\$133,012
Median Household Income	\$80,789	\$85,283	\$98,242	\$111,256
Total Housing Units	2,435	45,220	78,393	154,932
Median Home Value	\$428,751	\$424,791	\$474,929	\$559,268
Bachelors Degree	21.7%	19.6%	22.3%	25.4%
Graduate Degree	12.6%	13.2%	16.5%	21.3%

## Projections (2025)

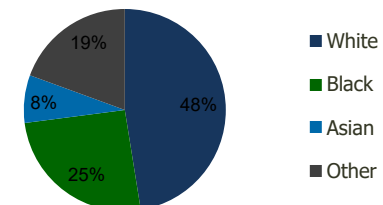
Projected Population	7,815	144,938	255,531	493,481
Projected 5 Year Pop Growth	0.9%	1.5%	1.5%	1.2%
Projected Households	2,539	48,595	84,640	164,581
Projected 5 Year Household Growth	0.8%	1.5%	1.5%	1.2%



Education (3-Mile)



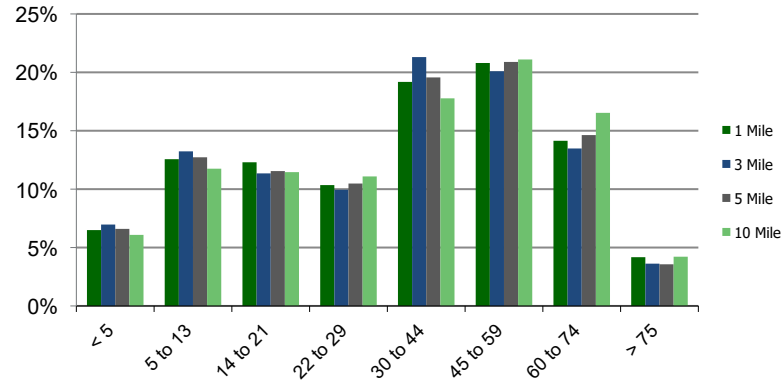
Daytime Population (3-Mile)



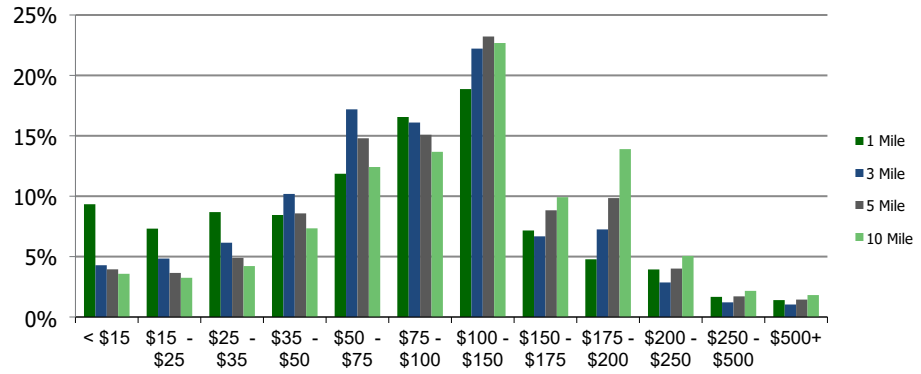
Ethnicity (3-Mile)

This report was produced using data from private and government sources deemed to be reliable and is herein provided without representation or warranty.

**Population by Age Range**



**Household Income by Income Range (\$000)**



<b>109200-Smoketown Station-Block 6</b> Woodbridge, VA		1.00 Mile Radius	3.00 Mile Radius	5.00 Mile Radius	10.00 Mile Radius
-----------------------------------------------------------	--	------------------	------------------	------------------	-------------------

<b>Population</b>	Current Estimated Population	7,486	134,868	236,690	464,628
	2010 Census Population	6,992	119,084	206,056	420,733
	2000 Census Population	6,421	102,890	166,650	354,189
	Historical Annual Growth 2000 to 2010	0.86%	1.47%	2.15%	1.74%
	Estimated Annual Growth 2010 to 2020	0.64%	1.16%	1.30%	0.93%
	Projected Annual Growth 2020 to 2025	0.86%	1.45%	1.54%	1.21%
<b>Households</b>	Current Estimated Households	2,435	45,220	78,393	154,932
	2010 Census Households	2,288	39,867	68,211	140,324
	2000 Census Households	2,136	35,392	55,488	118,103
	Historical Annual Growth 2000 to 2010	0.7%	1.2%	2.1%	1.7%
	Estimated Annual Growth 2010 to 2020	0.6%	1.2%	1.3%	0.9%
	Projected Annual Growth 2020 to 2025	0.8%	1.5%	1.5%	1.2%
	Population per Household	3.1	3.0	3.0	3.0
<b>Ethnicity</b>	White	43.2%	47.5%	49.0%	55.8%
	Black or African American	24.9%	25.5%	26.4%	21.5%
	Asian & Pacific Islander	11.4%	7.6%	8.1%	10.0%
	Other Races	20.4%	19.4%	16.4%	12.7%
	Hispanic or Latino Population	28.4%	30.5%	24.6%	18.8%
	Non Hispanic or Latino Population	71.6%	69.5%	75.4%	81.2%

This report was produced using data from private and government sources deemed to be reliable and is herein provided without representation or warranty.