

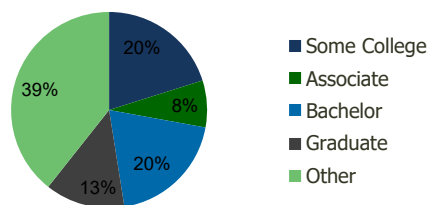
109180-Smoketown Station-Block 4 Woodbridge, VA	1.00 Mile Radius	3.00 Mile Radius	5.00 Mile Radius	10.00 Mile Radius
--	---------------------	---------------------	---------------------	----------------------

Demographics (2020)

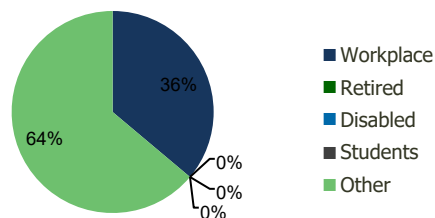
Current Population	8,385	137,367	238,517	463,332
Total Daytime Pop	17,984	111,543	180,836	381,429
Workplace Pop	11,817	40,290	55,296	138,074
Average Household Income	\$93,554	\$105,659	\$118,443	\$133,181
Median Household Income	\$78,168	\$85,687	\$98,567	\$111,362
Total Housing Units	2,737	45,809	78,919	154,338
Median Home Value	\$423,039	\$425,188	\$475,802	\$559,540
Bachelors Degree	20.7%	19.6%	22.3%	25.4%
Graduate Degree	12.1%	13.2%	16.5%	21.3%

Projections (2025)

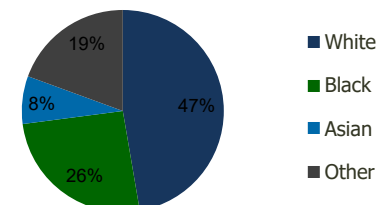
Projected Population	8,724	147,474	257,464	492,314
Projected 5 Year Pop Growth	0.8%	1.4%	1.5%	1.2%
Projected Households	2,844	49,183	85,197	164,023
Projected 5 Year Household Growth	0.8%	1.4%	1.5%	1.2%



Education (3-Mile)



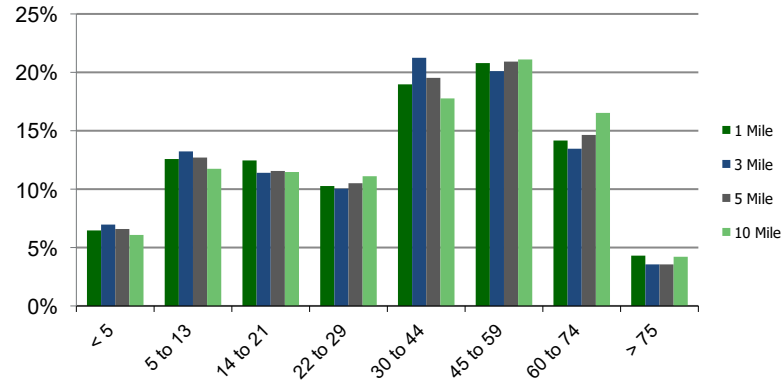
Daytime Population (3-Mile)



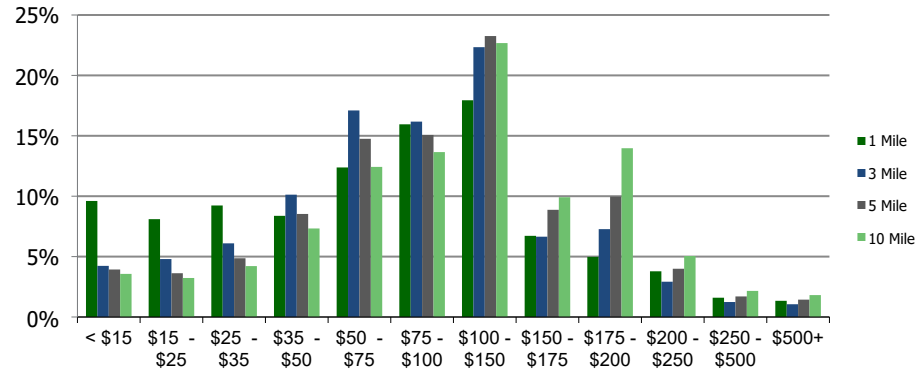
Ethnicity (3-Mile)

This report was produced using data from private and government sources deemed to be reliable and is herein provided without representation or warranty.

Population by Age Range



Household Income by Income Range (\$000)



	1.00 Mile Radius	3.00 Mile Radius	5.00 Mile Radius	10.00 Mile Radius
109180-Smoketown Station-Block 4				
Woodbridge, VA				

Population	Current Estimated Population	8,385	137,367	238,517	463,332
	2010 Census Population	7,880	121,429	207,688	418,971
	2000 Census Population	7,163	105,343	167,397	352,291
	Historical Annual Growth 2000 to 2010	0.96%	1.43%	2.18%	1.75%
	Estimated Annual Growth 2010 to 2020	0.58%	1.15%	1.30%	0.94%
	Projected Annual Growth 2020 to 2025	0.80%	1.43%	1.54%	1.22%
Households	Current Estimated Households	2,737	45,809	78,919	154,338
	2010 Census Households	2,587	40,427	68,680	139,581
	2000 Census Households	2,402	36,058	55,779	117,311
	Historical Annual Growth 2000 to 2010	0.7%	1.2%	2.1%	1.8%
	Estimated Annual Growth 2010 to 2020	0.5%	1.2%	1.3%	0.9%
	Projected Annual Growth 2020 to 2025	0.8%	1.4%	1.5%	1.2%
	Population per Household	3.1	3.0	3.0	3.0
Ethnicity	White	43.0%	47.3%	49.1%	55.8%
	Black or African American	25.6%	25.6%	26.4%	21.5%
	Asian & Pacific Islander	11.3%	7.6%	8.1%	10.0%
	Other Races	20.1%	19.4%	16.3%	12.7%
	Hispanic or Latino Population	28.2%	30.4%	24.5%	18.8%
	Non Hispanic or Latino Population	71.8%	69.6%	75.5%	81.2%

This report was produced using data from private and government sources deemed to be reliable and is herein provided without representation or warranty.