

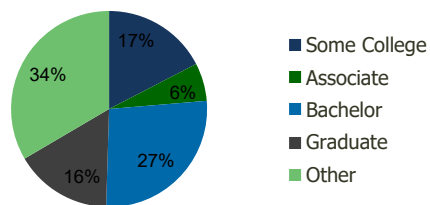
106830-Englewood Plaza Englewood, CO	1.00 Mile Radius	3.00 Mile Radius	5.00 Mile Radius	10.00 Mile Radius
---	---------------------	---------------------	---------------------	----------------------

Demographics (2020)

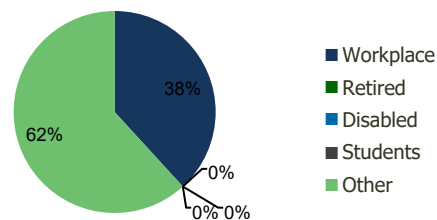
Current Population	15,699	133,070	381,961	1,452,941
Total Daytime Pop	23,189	195,310	464,183	1,824,353
Workplace Pop	16,103	74,620	203,240	917,978
Average Household Income	\$73,605	\$104,156	\$107,546	\$105,831
Median Household Income	\$55,736	\$69,089	\$73,031	\$76,449
Total Housing Units	8,011	55,979	166,456	627,781
Median Home Value	\$426,700	\$475,447	\$503,760	\$527,744
Bachelors Degree	27.6%	26.8%	29.1%	30.3%
Graduate Degree	12.7%	16.1%	17.6%	18.5%

Projections (2025)

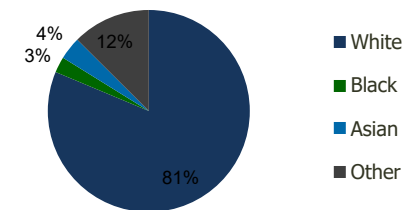
Projected Population	16,489	136,192	388,129	1,512,463
Projected 5 Year Pop Growth	1.0%	0.5%	0.3%	0.8%
Projected Households	8,431	57,454	169,913	655,135
Projected 5 Year Household Growth	1.0%	0.5%	0.4%	0.9%



Education (3-Mile)



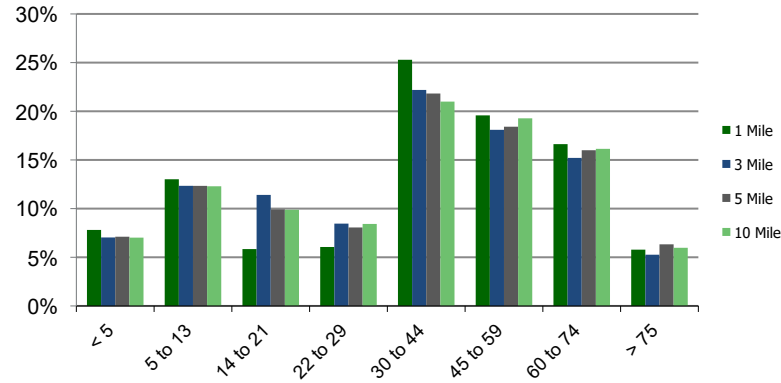
Daytime Population (3-Mile)



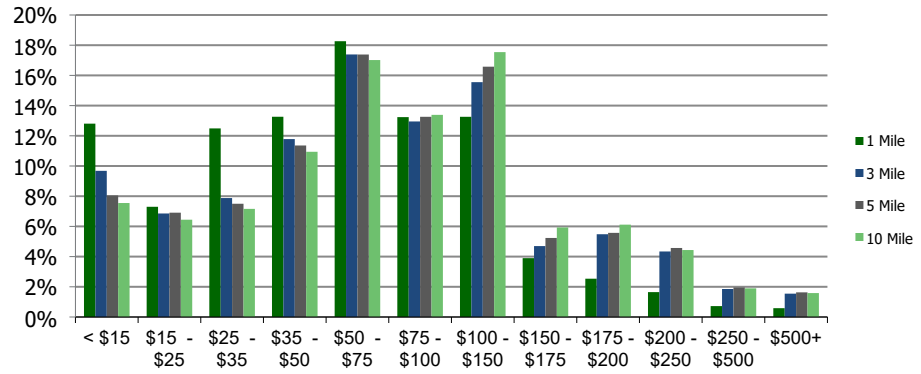
Ethnicity (3-Mile)

This report was produced using data from private and government sources deemed to be reliable and is herein provided without representation or warranty.

Population by Age Range



Household Income by Income Range (\$000)



106830-Englewood Plaza Englewood, CO	1.00 Mile Radius	3.00 Mile Radius	5.00 Mile Radius	10.00 Mile Radius
---	---------------------	---------------------	---------------------	----------------------

Population	Current Estimated Population	15,699	133,070	381,961	1,452,941
	2010 Census Population	13,870	117,205	340,917	1,269,332
	2000 Census Population	14,485	116,147	338,331	1,214,436
	Historical Annual Growth 2000 to 2010	-0.43%	0.09%	0.08%	0.44%
	Estimated Annual Growth 2010 to 2020	1.16%	1.19%	1.06%	1.26%
	Projected Annual Growth 2020 to 2025	0.99%	0.47%	0.32%	0.81%
Households	Current Estimated Households	8,011	55,979	166,456	627,781
	2010 Census Households	7,018	48,974	146,699	542,173
	2000 Census Households	6,833	49,211	146,042	504,974
	Historical Annual Growth 2000 to 2010	0.3%	0.0%	0.0%	0.7%
	Estimated Annual Growth 2010 to 2020	1.2%	1.3%	1.2%	1.4%
	Projected Annual Growth 2020 to 2025	1.0%	0.5%	0.4%	0.9%
	Population per Household	1.9	2.3	2.3	2.3
Ethnicity	White	84.7%	81.3%	81.7%	78.5%
	Black or African American	3.3%	2.5%	3.0%	6.3%
	Asian & Pacific Islander	1.5%	3.6%	3.6%	3.9%
	Other Races	10.5%	12.5%	11.7%	11.3%
	Hispanic or Latino Population	16.4%	28.3%	27.9%	22.7%
	Non Hispanic or Latino Population	83.6%	71.7%	72.1%	77.3%

This report was produced using data from private and government sources deemed to be reliable and is herein provided without representation or warranty.