

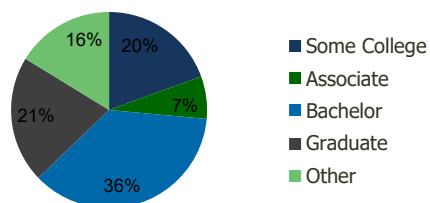
1674-Market at Southpark Littleton,CO	1.00 Mile Radius	3.00 Mile Radius	5.00 Mile Radius	10.00 Mile Radius
--	---------------------	---------------------	---------------------	----------------------

Demographics (2018)

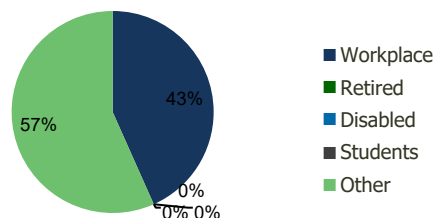
Current Population	10,379	104,783	256,087	843,783
Total Daytime Pop	19,523	106,683	257,959	998,233
Workplace Pop	11,772	46,220	109,872	503,216
Average Household Income	\$115,486	\$117,392	\$122,846	\$107,389
Median Household Income	\$101,782	\$95,716	\$94,801	\$78,016
Total Housing Units	4,255	41,653	99,574	349,554
Median Home Value	\$582,027	\$598,642	\$609,044	\$555,281
Bachelors Degree	35.2%	36.4%	36.1%	31.8%
Graduate Degree	21.2%	20.9%	20.5%	18.8%

Projections (2023)

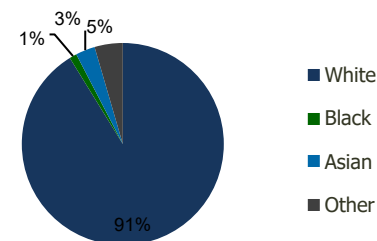
Projected Population	10,983	110,533	268,579	882,994
Projected 5 Year Pop Growth	1.1%	1.1%	1.0%	0.9%
Projected Households	4,531	44,004	104,482	366,535
Projected 5 Year Household Growth	1.3%	1.1%	1.0%	1.0%



Education (3-Mile)



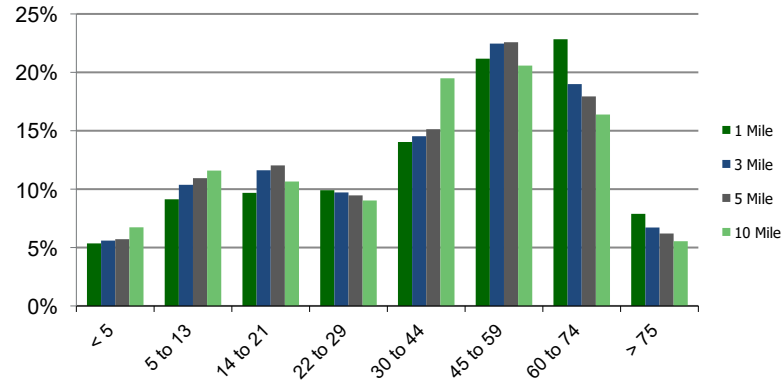
Daytime Population (3-Mile)



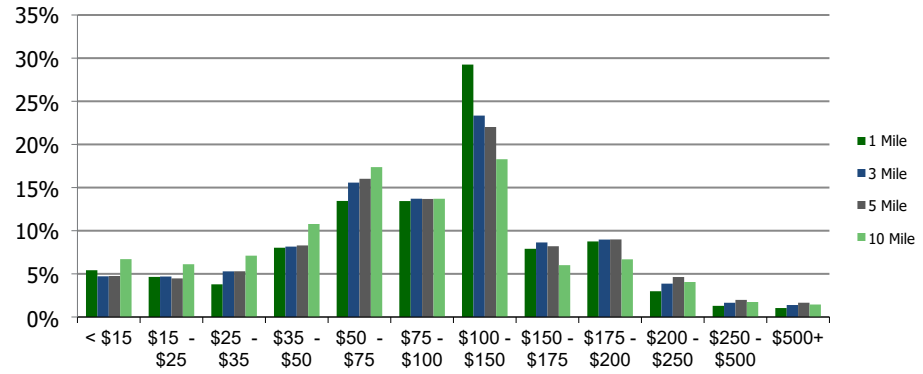
Ethnicity (3-Mile)

This report was produced using data from private and government sources deemed to be reliable and is herein provided without representation or warranty.

Population by Age Range



Household Income by Income Range (\$000)



1674-Market at Southpark Littleton, CO	1.00 Mile Radius	3.00 Mile Radius	5.00 Mile Radius	10.00 Mile Radius
---	-----------------------------	-----------------------------	-----------------------------	------------------------------

Population	Current Estimated Population	10,379	104,783	256,087	843,783
	2010 Census Population	9,141	95,140	235,914	752,146
	2000 Census Population	10,204	92,525	216,909	680,267
	Historical Annual Growth 2000 to 2010	-1.09%	0.28%	0.84%	1.01%
	Estimated Annual Growth 2010 to 2012	1.46%	1.11%	0.94%	1.32%
	Projected Annual Growth 2012 to 2018	1.14%	1.07%	0.96%	0.91%
Households	Current Estimated Households	4,255	41,653	99,574	349,554
	2010 Census Households	3,681	37,606	91,663	309,289
	2000 Census Households	3,784	34,927	81,816	276,304
	Historical Annual Growth 2000 to 2010	-0.3%	0.7%	1.1%	1.1%
	Estimated Annual Growth 2010 to 2012	1.7%	1.2%	1.0%	1.4%
	Projected Annual Growth 2012 to 2018	1.3%	1.1%	1.0%	1.0%
	Population per Household	2.4	2.5	2.6	2.4
Ethnicity	White	92.5%	91.2%	89.9%	83.4%
	Black or African American	1.6%	1.2%	1.2%	3.3%
	Asian & Pacific Islander	2.4%	3.1%	3.8%	4.5%
	Other Races	3.6%	4.5%	5.2%	8.8%
	Hispanic or Latino Population	6.2%	7.8%	8.9%	17.3%
	Non Hispanic or Latino Population	93.8%	92.2%	91.1%	82.7%

This report was produced using data from private and government sources deemed to be reliable and is herein provided without representation or warranty.