

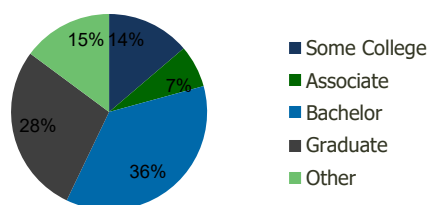
111880-The Marketplace at Factoria Bellevue, WA	1.00 Mile Radius	3.00 Mile Radius	5.00 Mile Radius	10.00 Mile Radius
--	---------------------	---------------------	---------------------	----------------------

Demographics (2019)

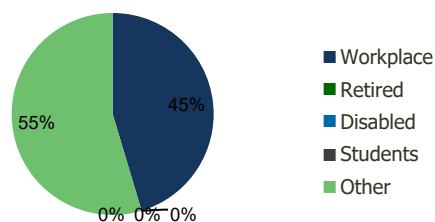
Current Population	11,199	100,148	227,472	1,147,697
Total Daytime Pop	28,854	150,299	316,192	1,656,274
Workplace Pop	13,493	68,190	172,395	968,653
Average Household Income	\$152,892	\$167,337	\$168,384	\$135,621
Median Household Income	\$112,354	\$123,330	\$122,249	\$99,353
Total Housing Units	4,507	40,867	93,027	495,367
Median Home Value	\$1,169,876	\$1,227,987	\$1,155,177	\$863,818
Bachelors Degree	33.6%	36.4%	37.0%	33.5%
Graduate Degree	25.6%	28.0%	28.2%	23.8%

Projections (2023)

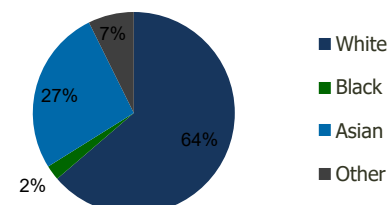
Projected Population	11,103	102,584	235,235	1,211,423
Projected 5 Year Pop Growth	-0.2%	0.5%	0.7%	1.1%
Projected Households	4,470	42,191	96,921	529,450
Projected 5 Year Household Growth	-0.2%	0.6%	0.8%	1.3%



Education (3-Mile)



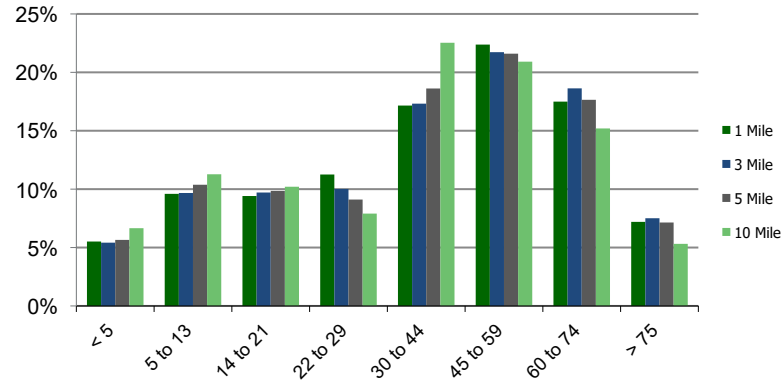
Daytime Population (3-Mile)



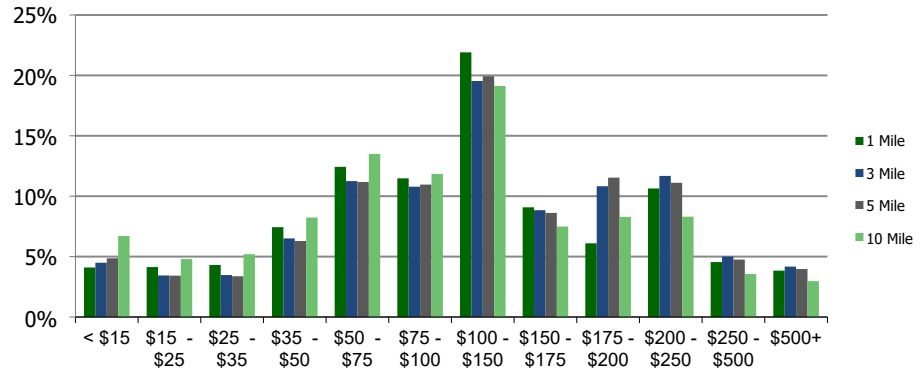
Ethnicity (3-Mile)

This report was produced using data from private and government sources deemed to be reliable and is herein provided without representation or warranty.

Population by Age Range



Household Income by Income Range (\$000)



111880-The Marketplace at Factoria Bellevue, WA	1.00 Mile Radius	3.00 Mile Radius	5.00 Mile Radius	10.00 Mile Radius
---	------------------	------------------	------------------	-------------------

Population	Current Estimated Population	11,199	100,148	227,472	1,147,697
	2010 Census Population	10,468	87,089	193,614	945,027
	2000 Census Population	9,949	81,999	175,948	832,667
	Historical Annual Growth 2000 to 2010	0.51%	0.60%	0.96%	1.27%
	Estimated Annual Growth 2010 to 2012	0.69%	1.44%	1.67%	2.01%
	Projected Annual Growth 2012 to 2019	-0.17%	0.48%	0.67%	1.09%
Households	Current Estimated Households	4,507	40,867	93,027	495,367
	2010 Census Households	4,203	34,849	77,739	397,030
	2000 Census Households	4,203	32,905	71,234	350,288
	Historical Annual Growth 2000 to 2010	0.0%	0.6%	0.9%	1.3%
	Estimated Annual Growth 2010 to 2012	0.7%	1.6%	1.9%	2.3%
	Projected Annual Growth 2012 to 2019	-0.2%	0.6%	0.8%	1.3%
	Population per Household	2.5	2.4	2.4	2.3
Ethnicity	White	56.3%	63.7%	63.9%	62.3%
	Black or African American	2.5%	2.4%	2.8%	7.2%
	Asian & Pacific Islander	32.2%	26.6%	25.9%	20.6%
	Other Races	9.1%	7.3%	7.4%	9.8%
	Hispanic or Latino Population	5.7%	5.7%	6.6%	8.1%
	Non Hispanic or Latino Population	94.3%	94.3%	93.4%	91.9%

This report was produced using data from private and government sources deemed to be reliable and is herein provided without representation or warranty.