

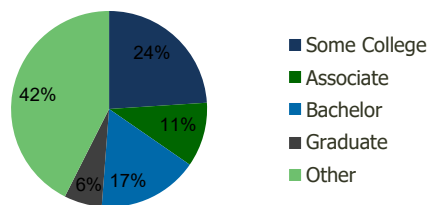
114820-Auburn North Auburn, WA	1.00 Mile Radius	3.00 Mile Radius	5.00 Mile Radius	10.00 Mile Radius
-----------------------------------	---------------------	---------------------	---------------------	----------------------

Demographics (2020)

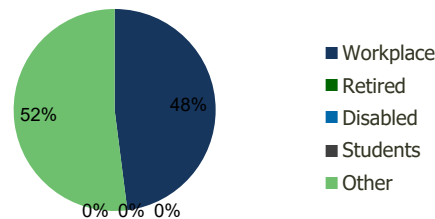
Current Population	13,383	77,051	234,583	652,713
Total Daytime Pop	25,230	106,987	263,971	759,262
Workplace Pop	16,011	51,340	118,593	370,923
Average Household Income	\$69,928	\$85,944	\$87,314	\$97,375
Median Household Income	\$57,521	\$70,258	\$68,670	\$78,321
Total Housing Units	5,643	28,116	85,991	241,537
Median Home Value	\$324,038	\$410,444	\$427,336	\$477,125
Bachelors Degree	10.8%	16.6%	17.7%	20.2%
Graduate Degree	5.5%	6.2%	6.2%	8.2%

Projections (2025)

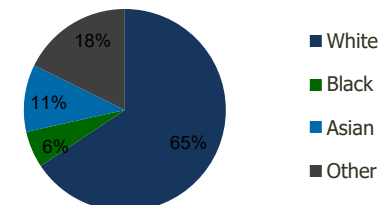
Projected Population	14,035	79,867	241,036	669,964
Projected 5 Year Pop Growth	1.0%	0.7%	0.5%	0.5%
Projected Households	5,927	29,156	88,379	248,117
Projected 5 Year Household Growth	1.0%	0.7%	0.5%	0.5%



Education (3-Mile)



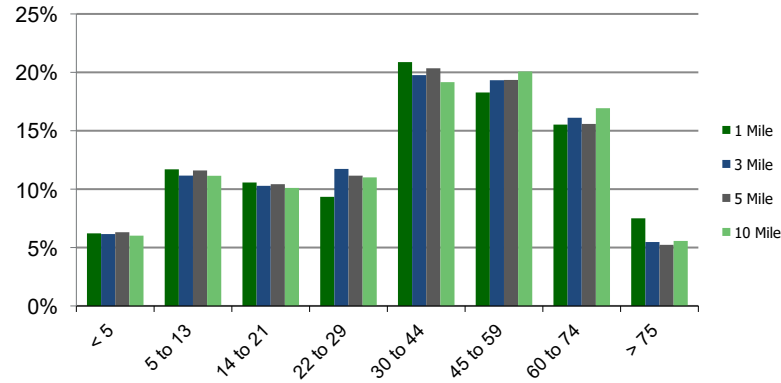
Daytime Population (3-Mile)



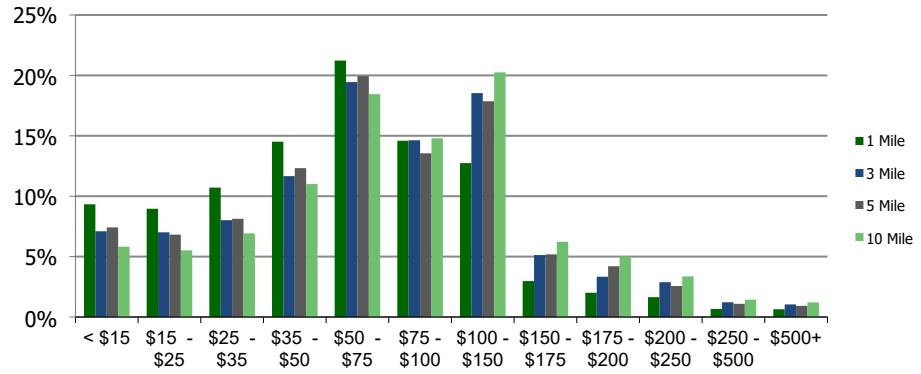
Ethnicity (3-Mile)

This report was produced using data from private and government sources deemed to be reliable and is herein provided without representation or warranty.

Population by Age Range



Household Income by Income Range (\$000)



114820-Auburn North

Auburn, WA

1.00 Mile Radius

3.00 Mile Radius

5.00 Mile Radius

10.00 Mile Radius

	1.00 Mile Radius	3.00 Mile Radius	5.00 Mile Radius	10.00 Mile Radius
Population				
Current Estimated Population	13,383	77,051	234,583	652,713
2010 Census Population	10,935	66,098	206,345	578,072
2000 Census Population	10,879	57,369	176,904	512,430
Historical Annual Growth 2000 to 2010	0.05%	1.43%	1.55%	1.21%
Estimated Annual Growth 2010 to 2020	1.90%	1.44%	1.20%	1.14%
Projected Annual Growth 2020 to 2025	0.95%	0.72%	0.54%	0.52%
Households				
Current Estimated Households	5,643	28,116	85,991	241,537
2010 Census Households	4,573	24,046	75,497	213,233
2000 Census Households	4,659	21,730	67,624	192,120
Historical Annual Growth 2000 to 2010	-0.2%	1.0%	1.1%	1.0%
Estimated Annual Growth 2010 to 2020	2.0%	1.5%	1.2%	1.2%
Projected Annual Growth 2020 to 2025	1.0%	0.7%	0.5%	0.5%
Population per Household	2.3	2.7	2.7	2.7
Ethnicity				
White	68.0%	65.7%	59.1%	63.7%
Black or African American	6.1%	5.8%	9.0%	7.9%
Asian & Pacific Islander	6.7%	10.8%	12.6%	12.3%
Other Races	19.2%	17.7%	19.3%	16.1%
Hispanic or Latino Population	15.7%	15.3%	16.4%	13.2%
Non Hispanic or Latino Population	84.3%	84.7%	83.6%	86.8%

This report was produced using data from private and government sources deemed to be reliable and is herein provided without representation or warranty.