

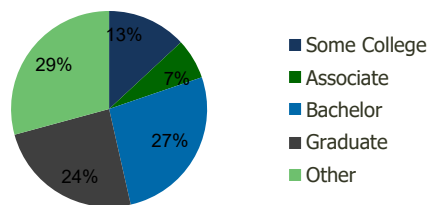
115910-Mineola Crossings Mineola, NY	1.00 Mile Radius	3.00 Mile Radius	5.00 Mile Radius	10.00 Mile Radius
---	---------------------	---------------------	---------------------	----------------------

Demographics (2020)

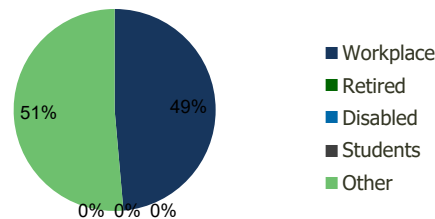
Current Population	16,730	138,948	424,756	1,847,066
Total Daytime Pop	28,163	261,937	635,821	1,992,129
Workplace Pop	15,555	127,323	299,124	793,430
Average Household Income	\$151,139	\$167,613	\$150,502	\$134,751
Median Household Income	\$110,705	\$119,245	\$110,621	\$102,371
Total Housing Units	6,118	46,290	135,963	618,227
Median Home Value	\$693,002	\$728,630	\$639,223	\$604,192
Bachelors Degree	24.5%	26.7%	23.8%	23.6%
Graduate Degree	21.3%	24.3%	20.0%	18.1%

Projections (2025)

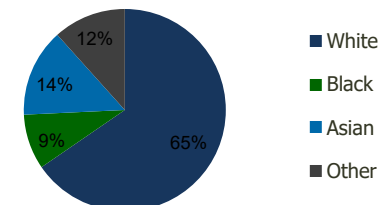
Projected Population	16,843	139,610	423,999	1,846,159
Projected 5 Year Pop Growth	0.1%	0.1%	0.0%	0.0%
Projected Households	6,175	46,617	135,820	618,081
Projected 5 Year Household Growth	0.2%	0.1%	0.0%	0.0%



Education (3-Mile)



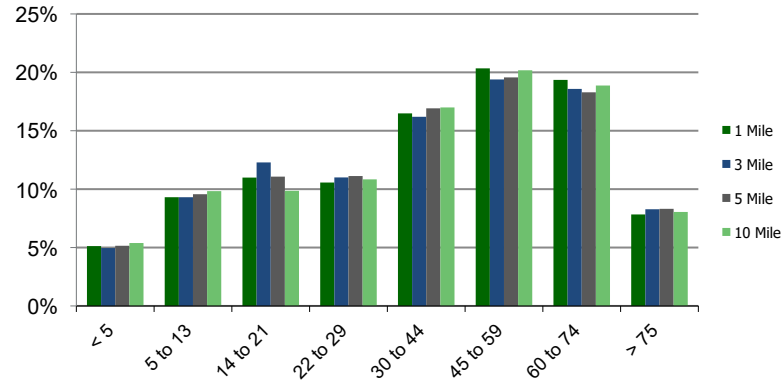
Daytime Population (3-Mile)



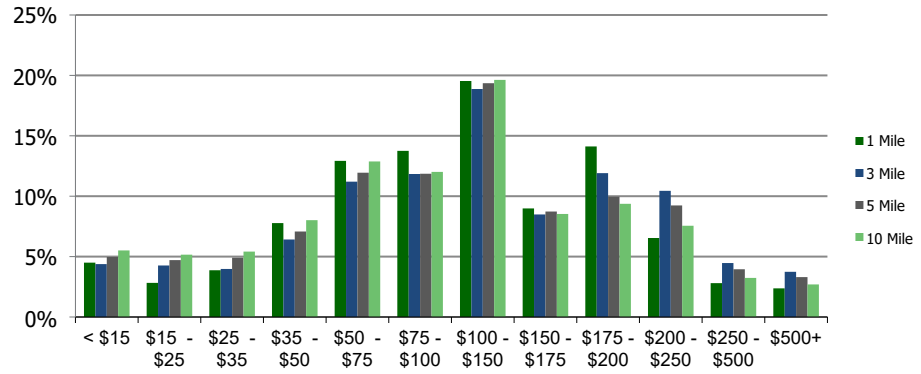
Ethnicity (3-Mile)

This report was produced using data from private and government sources deemed to be reliable and is herein provided without representation or warranty.

Population by Age Range



Household Income by Income Range (\$000)



115910-Mineola Crossings

Mineola, NY

1.00 Mile Radius

3.00 Mile Radius

5.00 Mile Radius

10.00 Mile Radius

	1.00 Mile Radius	3.00 Mile Radius	5.00 Mile Radius	10.00 Mile Radius
Population	Current Estimated Population	16,730	138,948	424,756
	2010 Census Population	16,551	135,307	418,937
	2000 Census Population	16,459	128,291	408,074
	Historical Annual Growth 2000 to 2010	0.06%	0.53%	0.26%
	Estimated Annual Growth 2010 to 2020	0.10%	0.25%	0.13%
	Projected Annual Growth 2020 to 2025	0.14%	0.09%	-0.04%
Households	Current Estimated Households	6,118	46,290	135,963
	2010 Census Households	6,033	44,713	133,636
	2000 Census Households	5,904	43,337	132,609
	Historical Annual Growth 2000 to 2010	0.2%	0.3%	0.1%
	Estimated Annual Growth 2010 to 2020	0.1%	0.3%	0.2%
	Projected Annual Growth 2020 to 2025	0.2%	0.1%	0.0%
	Population per Household	2.7	2.9	3.0
Ethnicity	White	79.4%	65.4%	59.4%
	Black or African American	2.6%	8.8%	13.9%
	Asian & Pacific Islander	9.6%	14.1%	13.6%
	Other Races	8.5%	11.6%	13.1%
	Hispanic or Latino Population	13.2%	17.5%	19.7%
	Non Hispanic or Latino Population	86.8%	82.5%	80.3%

This report was produced using data from private and government sources deemed to be reliable and is herein provided without representation or warranty.