

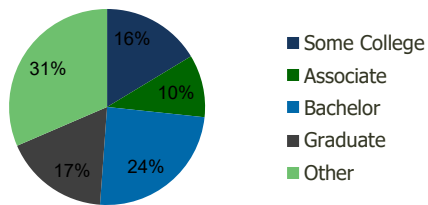
111380-North Massapequa S.C. North Massapequa, NY	1.00 Mile Radius	3.00 Mile Radius	5.00 Mile Radius	10.00 Mile Radius
--	---------------------	---------------------	---------------------	----------------------

Demographics (2021)

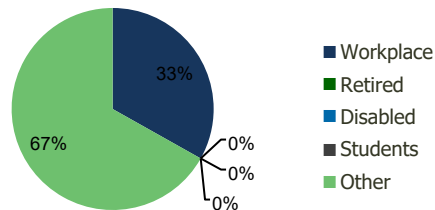
Current Population	21,782	185,613	401,874	1,116,876
Total Daytime Pop	17,031	141,641	343,047	1,259,001
Workplace Pop	5,783	46,948	135,190	571,350
Average Household Income	\$156,219	\$149,700	\$144,761	\$144,732
Median Household Income	\$137,349	\$129,008	\$122,727	\$115,214
Total Housing Units	7,488	62,493	134,103	366,178
Median Home Value	\$651,676	\$632,492	\$627,566	\$629,220
Bachelors Degree	25.1%	24.5%	23.9%	23.0%
Graduate Degree	19.7%	17.4%	17.3%	17.9%

Projections (2026)

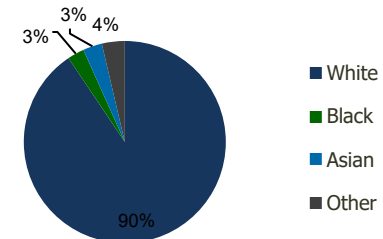
Projected Population	21,647	184,165	399,386	1,115,997
Projected 5 Year Pop Growth	-0.1%	-0.2%	-0.1%	0.0%
Projected Households	7,438	62,002	133,271	366,073
Projected 5 Year Household Growth	-0.1%	-0.2%	-0.1%	0.0%



Education (3-Mile)



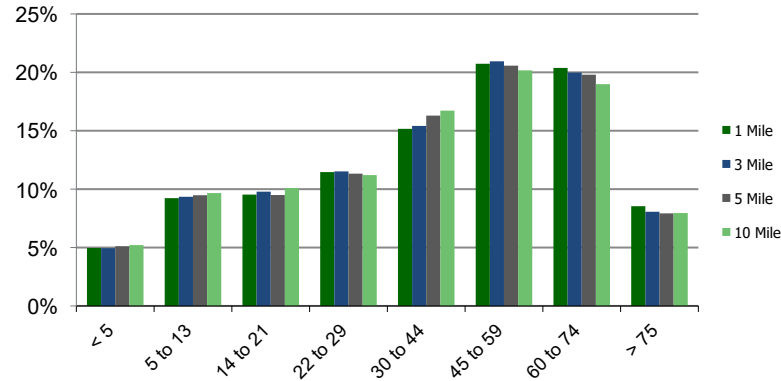
Daytime Population (3-Mile)



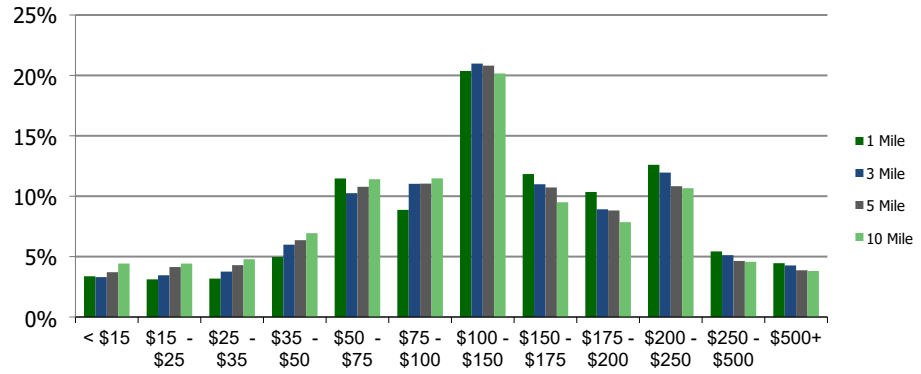
Ethnicity (3-Mile)

This report was produced using data from private and government sources deemed to be reliable and is herein provided without representation or warranty.

Population by Age Range



Household Income by Income Range (\$000)



111380-North Massapequa S.C. North Massapequa, NY	1.00 Mile Radius	3.00 Mile Radius	5.00 Mile Radius	10.00 Mile Radius
---	-------------------------	-------------------------	-------------------------	--------------------------

Population	Current Estimated Population	21,782	185,613	401,874	1,116,876
	2010 Census Population	21,190	180,944	392,729	1,083,113
	2000 Census Population	22,366	186,180	396,101	1,077,434
	Historical Annual Growth 2000 to 2010	-0.54%	-0.28%	-0.09%	0.05%
	Estimated Annual Growth 2010 to 2020	0.23%	0.22%	0.20%	0.26%
	Projected Annual Growth 2020 to 2025	-0.12%	-0.16%	-0.12%	-0.02%
Households	Current Estimated Households	7,488	62,493	134,103	366,178
	2010 Census Households	7,280	60,934	130,938	354,171
	2000 Census Households	7,431	61,514	130,431	349,587
	Historical Annual Growth 2000 to 2010	-0.2%	-0.1%	0.0%	0.1%
	Estimated Annual Growth 2010 to 2020	0.2%	0.2%	0.2%	0.3%
	Projected Annual Growth 2020 to 2025	-0.1%	-0.2%	-0.1%	0.0%
	Population per Household	2.9	3.0	3.0	3.0
Ethnicity	White	96.3%	90.6%	83.4%	71.4%
	Black or African American	0.4%	2.7%	5.5%	12.8%
	Asian & Pacific Islander	1.4%	3.1%	5.0%	6.2%
	Other Races	1.9%	3.7%	6.2%	9.7%
	Hispanic or Latino Population	5.1%	8.7%	12.2%	16.9%
	Non Hispanic or Latino Population	94.9%	91.3%	87.8%	83.1%

This report was produced using data from private and government sources deemed to be reliable and is herein provided without representation or warranty.