

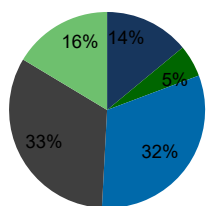
102110-Hickory Ridge Columbia, MD	1.00 Mile Radius	3.00 Mile Radius	5.00 Mile Radius	10.00 Mile Radius
--------------------------------------	---------------------	---------------------	---------------------	----------------------

Demographics (2020)

Current Population	8,510	82,840	160,204	549,619
Total Daytime Pop	9,993	118,437	225,859	668,420
Workplace Pop	2,818	62,241	122,799	333,407
Average Household Income	\$154,754	\$135,934	\$143,112	\$134,467
Median Household Income	\$132,603	\$112,444	\$117,905	\$109,413
Total Housing Units	3,163	32,727	61,169	199,061
Median Home Value	\$563,495	\$462,490	\$488,119	\$483,861
Bachelors Degree	31.9%	31.6%	30.9%	28.8%
Graduate Degree	33.1%	32.8%	33.2%	27.8%

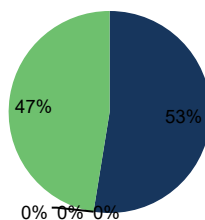
Projections (2025)

Projected Population	8,696	84,921	165,665	576,469
Projected 5 Year Pop Growth	0.4%	0.5%	0.7%	1.0%
Projected Households	3,236	33,583	63,175	209,052
Projected 5 Year Household Growth	0.5%	0.5%	0.6%	1.0%



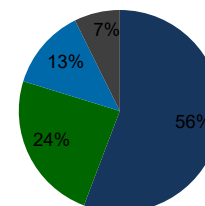
Education (3-Mile)

- Some College
- Associate
- Bachelor
- Graduate
- Other



Daytime Population (3-Mile)

- Workplace
- Retired
- Disabled
- Students
- Other

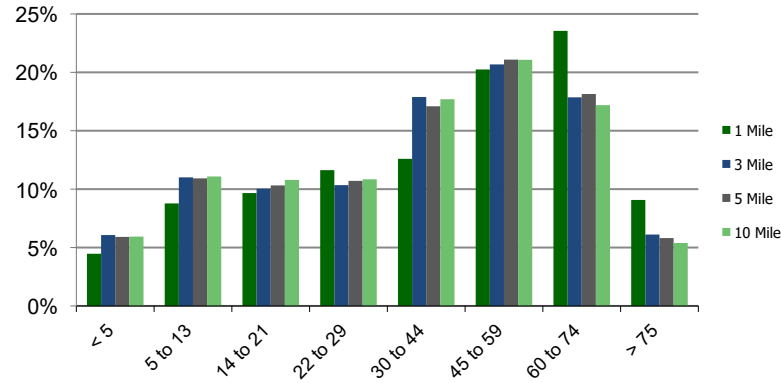


Ethnicity (3-Mile)

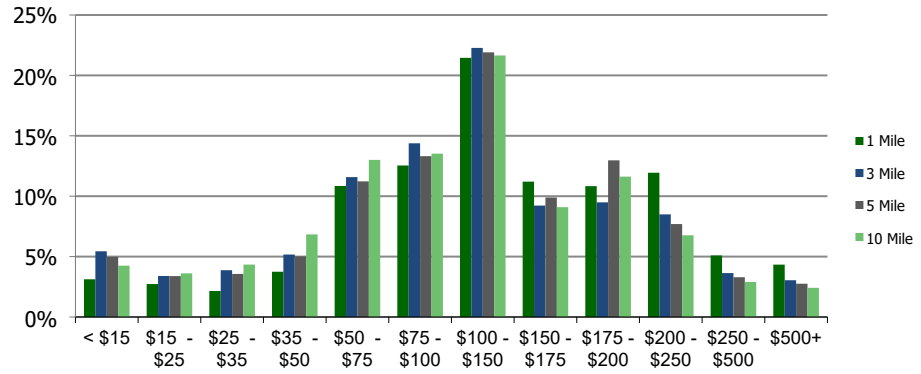
- White
- Black
- Asian
- Other

This report was produced using data from private and government sources deemed to be reliable and is herein provided without representation or warranty.

Population by Age Range



Household Income by Income Range (\$000)



102110-Hickory Ridge
Columbia, MD

1.00 Mile
Radius

3.00 Mile
Radius

5.00 Mile
Radius

10.00 Mile
Radius

	1.00 Mile Radius	3.00 Mile Radius	5.00 Mile Radius	10.00 Mile Radius
Population	Current Estimated Population	8,510	82,840	160,204
	2010 Census Population	8,581	76,638	143,683
	2000 Census Population	8,900	71,267	130,762
	Historical Annual Growth 2000 to 2010	-0.36%	0.73%	0.95%
	Estimated Annual Growth 2010 to 2020	-0.08%	0.73%	1.02%
	Projected Annual Growth 2020 to 2025	0.43%	0.50%	0.67%
Households	Current Estimated Households	3,163	32,727	61,169
	2010 Census Households	3,171	30,073	54,905
	2000 Census Households	3,017	27,241	48,957
	Historical Annual Growth 2000 to 2010	0.5%	1.0%	1.2%
	Estimated Annual Growth 2010 to 2020	0.0%	0.8%	1.0%
	Projected Annual Growth 2020 to 2025	0.5%	0.5%	0.6%
	Population per Household	2.6	2.5	2.6
Ethnicity	White	66.9%	55.8%	56.9%
	Black or African American	17.9%	24.0%	21.7%
	Asian & Pacific Islander	11.0%	12.9%	14.6%
	Other Races	4.3%	7.3%	6.8%
	Hispanic or Latino Population	9.8%	8.5%	7.4%
	Non Hispanic or Latino Population	90.2%	91.5%	92.6%

This report was produced using data from private and government sources deemed to be reliable and is herein provided without representation or warranty.