

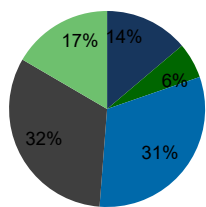
102060-Dorsey's Search Village Center Ellicott City, MD	1.00 Mile Radius	3.00 Mile Radius	5.00 Mile Radius	10.00 Mile Radius
--	---------------------	---------------------	---------------------	----------------------

Demographics (2021)

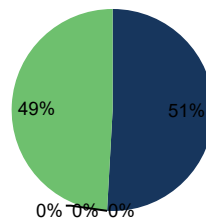
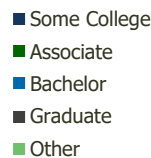
Current Population	9,314	91,155	198,625	627,830
Total Daytime Pop	8,450	100,646	234,981	740,169
Workplace Pop	3,426	51,205	117,451	357,594
Average Household Income	\$141,087	\$136,927	\$143,203	\$121,535
Median Household Income	\$116,842	\$114,490	\$119,098	\$94,996
Total Housing Units	3,904	35,749	76,102	233,972
Median Home Value	\$629,883	\$569,843	\$574,308	\$448,691
Bachelors Degree	34.0%	31.5%	31.5%	25.5%
Graduate Degree	32.1%	32.2%	32.5%	23.2%

Projections (2026)

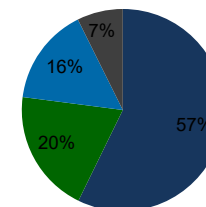
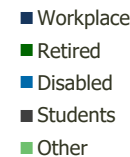
Projected Population	9,302	92,239	201,591	645,518
Projected 5 Year Pop Growth	0.0%	0.2%	0.3%	0.6%
Projected Households	3,894	36,203	77,281	240,433
Projected 5 Year Household Growth	0.0%	0.3%	0.3%	0.5%



Education (3-Mile)



Daytime Population (3-Mile)

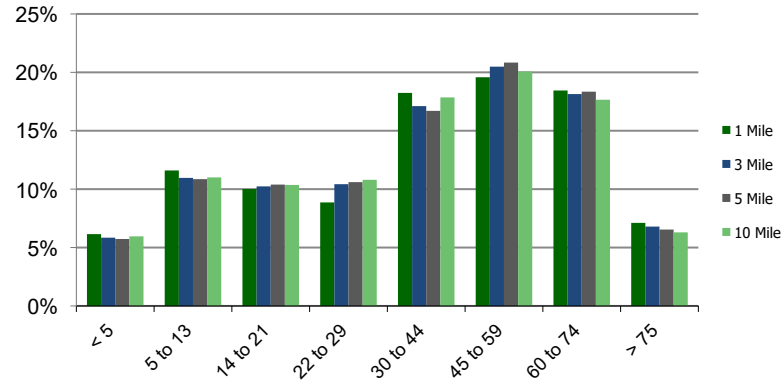


Ethnicity (3-Mile)

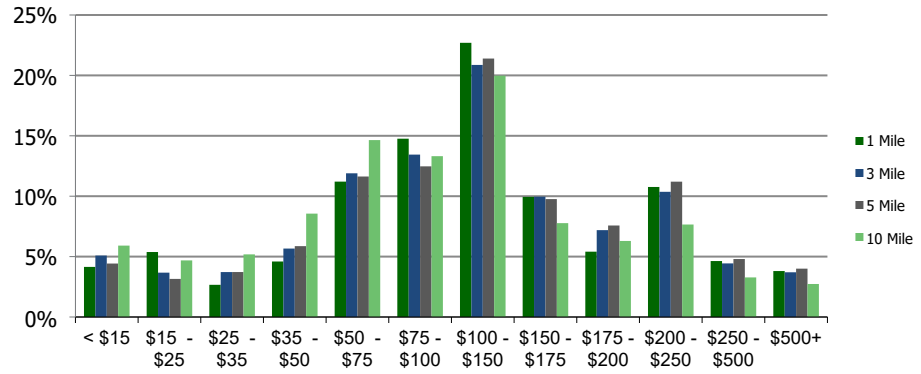


This report was produced using data from private and government sources deemed to be reliable and is herein provided without representation or warranty.

Population by Age Range



Household Income by Income Range (\$000)



102060-Dorsey's Search Village
 Ellicott City, MD

1.00 Mile Radius

3.00 Mile Radius

5.00 Mile Radius

10.00 Mile Radius

	1.00 Mile Radius	3.00 Mile Radius	5.00 Mile Radius	10.00 Mile Radius
Population	Current Estimated Population	9,314	91,155	198,625
	2010 Census Population	8,772	82,169	179,574
	2000 Census Population	8,383	75,002	162,404
	Historical Annual Growth 2000 to 2010	0.46%	0.92%	1.01%
	Estimated Annual Growth 2010 to 2020	0.51%	0.89%	0.86%
	Projected Annual Growth 2020 to 2025	-0.03%	0.24%	0.30%
Households	Current Estimated Households	3,904	35,749	76,102
	2010 Census Households	3,690	32,068	68,510
	2000 Census Households	3,411	28,646	61,179
	Historical Annual Growth 2000 to 2010	0.8%	1.1%	1.1%
	Estimated Annual Growth 2010 to 2020	0.5%	0.9%	0.9%
	Projected Annual Growth 2020 to 2025	0.0%	0.3%	0.3%
	Population per Household	2.4	2.5	2.6
Ethnicity	White	62.6%	57.2%	59.6%
	Black or African American	14.5%	19.8%	17.6%
	Asian & Pacific Islander	15.9%	15.6%	16.7%
	Other Races	7.0%	7.3%	6.1%
	Hispanic or Latino Population	5.9%	7.5%	6.7%
	Non Hispanic or Latino Population	94.1%	92.5%	93.3%

This report was produced using data from private and government sources deemed to be reliable and is herein provided without representation or warranty.