

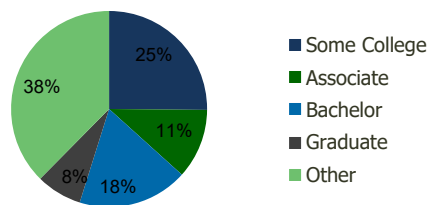
0035-Pavilions Centre Federal Way, WA	1.00 Mile Radius	3.00 Mile Radius	5.00 Mile Radius	10.00 Mile Radius
--	---------------------	---------------------	---------------------	----------------------

Demographics (2018)

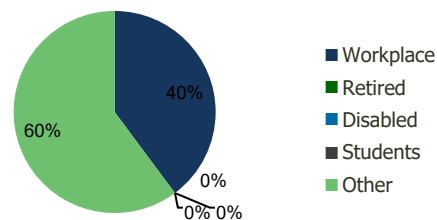
Current Population	16,245	107,299	216,277	688,004
Total Daytime Pop	21,622	99,346	226,996	831,622
Workplace Pop	10,857	39,559	102,590	423,965
Average Household Income	\$62,188	\$82,017	\$81,915	\$82,852
Median Household Income	\$50,377	\$64,782	\$65,015	\$65,297
Total Housing Units	6,679	39,711	80,345	260,941
Median Home Value	\$345,713	\$446,887	\$441,400	\$446,479
Bachelors Degree	14.3%	18.2%	17.5%	18.4%
Graduate Degree	5.6%	7.6%	7.3%	8.5%

Projections (2023)

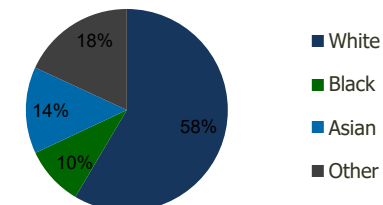
Projected Population	16,739	109,017	219,777	709,367
Projected 5 Year Pop Growth	0.6%	0.3%	0.3%	0.6%
Projected Households	6,901	40,403	81,748	269,454
Projected 5 Year Household Growth	0.7%	0.3%	0.3%	0.6%



Education (3-Mile)



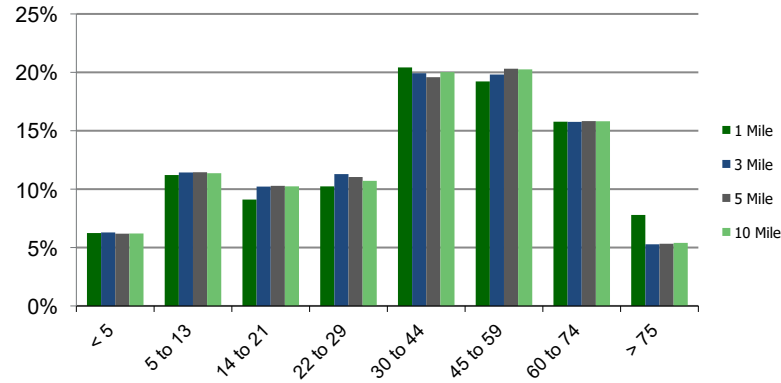
Daytime Population (3-Mile)



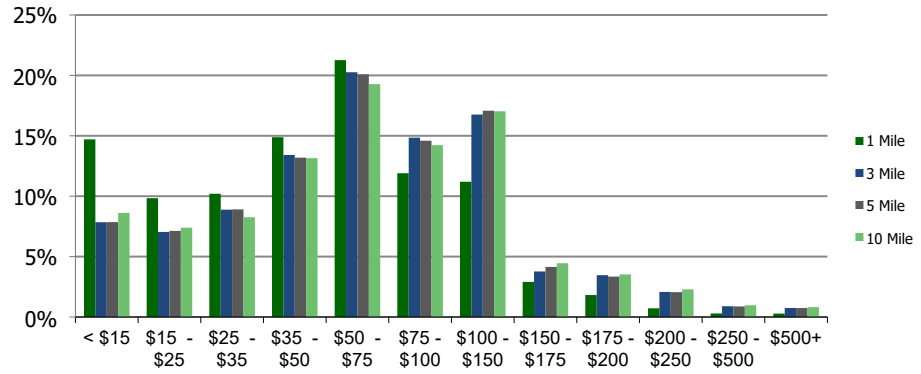
Ethnicity (3-Mile)

This report was produced using data from private and government sources deemed to be reliable and is herein provided without representation or warranty.

Population by Age Range



Household Income by Income Range (\$000)



	0035-Pavilions Centre Federal Way, WA	1.00 Mile Radius	3.00 Mile Radius	5.00 Mile Radius	10.00 Mile Radius
--	--	---------------------	---------------------	---------------------	----------------------

Population	Current Estimated Population	16,245	107,299	216,277	688,004
	2010 Census Population	14,361	97,452	197,372	618,151
	2000 Census Population	13,999	90,569	184,457	561,765
	Historical Annual Growth 2000 to 2010	0.26%	0.74%	0.68%	0.96%
	Estimated Annual Growth 2010 to 2012	1.42%	1.11%	1.05%	1.23%
	Projected Annual Growth 2012 to 2018	0.60%	0.32%	0.32%	0.61%
Households	Current Estimated Households	6,679	39,711	80,345	260,941
	2010 Census Households	5,853	35,931	73,055	233,637
	2000 Census Households	5,835	34,134	69,725	215,673
	Historical Annual Growth 2000 to 2010	0.0%	0.5%	0.5%	0.8%
	Estimated Annual Growth 2010 to 2012	1.5%	1.1%	1.1%	1.3%
	Projected Annual Growth 2012 to 2018	0.7%	0.3%	0.3%	0.6%
	Population per Household	2.4	2.7	2.7	2.6
Ethnicity	White	53.9%	58.5%	62.8%	65.1%
	Black or African American	11.7%	9.5%	8.3%	8.3%
	Asian & Pacific Islander	13.3%	13.9%	11.9%	11.3%
	Other Races	21.1%	18.1%	17.0%	15.4%
	Hispanic or Latino Population	17.9%	16.6%	15.6%	13.1%
	Non Hispanic or Latino Population	82.1%	83.4%	84.4%	86.9%

This report was produced using data from private and government sources deemed to be reliable and is herein provided without representation or warranty.