

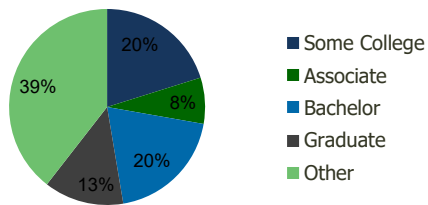
109150-Smoketown Station-Block 1 Woodbridge, VA	1.00 Mile Radius	3.00 Mile Radius	5.00 Mile Radius	10.00 Mile Radius
--	---------------------	---------------------	---------------------	----------------------

### Demographics (2021)

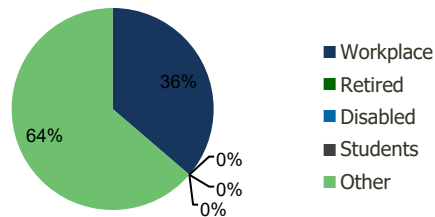
Current Population	6,813	134,521	242,421	467,907
Total Daytime Pop	20,142	111,304	172,325	369,926
Workplace Pop	12,080	40,374	53,517	134,928
Average Household Income	\$105,439	\$106,911	\$120,100	\$135,298
Median Household Income	\$83,082	\$86,797	\$99,854	\$112,883
Total Housing Units	2,164	45,107	80,326	155,805
Median Home Value	\$472,271	\$473,965	\$535,222	\$615,259
Bachelors Degree	21.2%	19.6%	22.3%	25.3%
Graduate Degree	11.0%	13.2%	16.5%	21.2%

### Projections (2026)

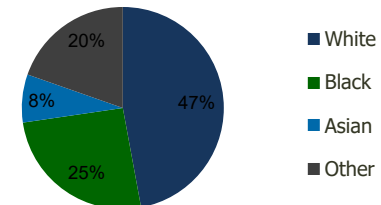
Projected Population	7,046	141,628	256,653	488,802
Projected 5 Year Pop Growth	0.7%	1.0%	1.1%	0.9%
Projected Households	2,235	47,488	85,029	162,765
Projected 5 Year Household Growth	0.6%	1.0%	1.1%	0.9%



Education (3-Mile)



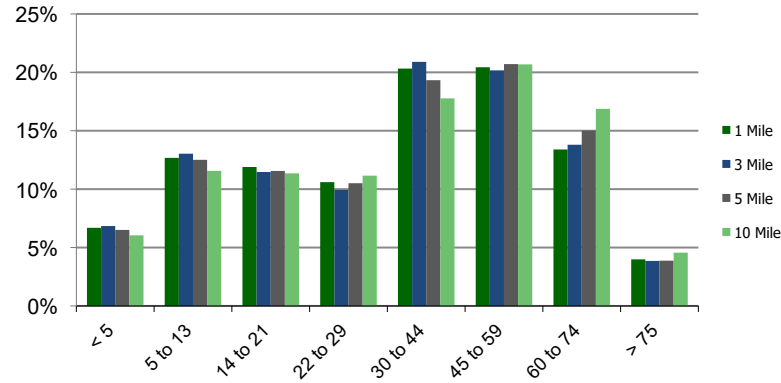
Daytime Population (3-Mile)



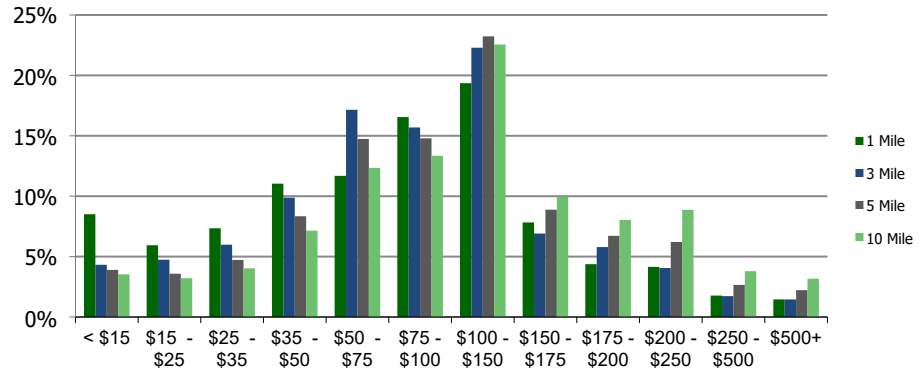
Ethnicity (3-Mile)

This report was produced using data from private and government sources deemed to be reliable and is herein provided without representation or warranty.

**Population by Age Range**



**Household Income by Income Range (\$000)**



<b>109150-Smocketown Station-Block 1</b>		1.00 Mile Radius	3.00 Mile Radius	5.00 Mile Radius	10.00 Mile Radius
<b>Woodbridge, VA</b>					

<b>Population</b>	Current Estimated Population	6,813	134,521	242,421	467,907
	2010 Census Population	6,076	115,481	204,897	415,279
	2000 Census Population	5,434	98,730	165,828	349,428
	Historical Annual Growth 2000 to 2010	1.12%	1.58%	2.14%	1.74%
	Estimated Annual Growth 2010 to 2020	0.98%	1.31%	1.44%	1.02%
	Projected Annual Growth 2020 to 2025	0.67%	1.03%	1.15%	0.88%
<b>Households</b>	Current Estimated Households	2,164	45,107	80,326	155,805
	2010 Census Households	1,942	38,685	67,901	138,422
	2000 Census Households	1,793	34,032	55,281	116,385
	Historical Annual Growth 2000 to 2010	0.8%	1.3%	2.1%	1.7%
	Estimated Annual Growth 2010 to 2020	0.9%	1.3%	1.4%	1.0%
	Projected Annual Growth 2020 to 2025	0.6%	1.0%	1.1%	0.9%
	Population per Household	3.1	3.0	3.0	3.0
<b>Ethnicity</b>	White	44.0%	47.1%	48.8%	55.5%
	Black or African American	22.6%	25.6%	26.7%	21.9%
	Asian & Pacific Islander	10.6%	7.7%	8.1%	9.9%
	Other Races	22.7%	19.6%	16.4%	12.8%
	Hispanic or Latino Population	34.4%	30.7%	24.6%	18.9%
	Non Hispanic or Latino Population	65.6%	69.3%	75.4%	81.1%

This report was produced using data from private and government sources deemed to be reliable and is herein provided without representation or warranty.