

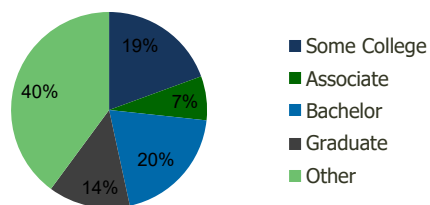
102250-Gordon Plaza Woodbridge, VA	1.00 Mile Radius	3.00 Mile Radius	5.00 Mile Radius	10.00 Mile Radius
---------------------------------------	---------------------	---------------------	---------------------	----------------------

## Demographics (2019)

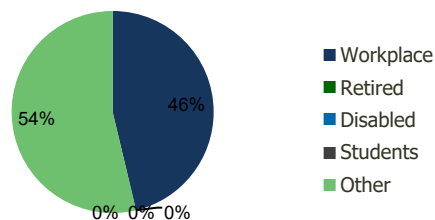
Current Population	12,040	69,452	179,386	567,701
Total Daytime Pop	11,225	58,968	142,695	451,078
Workplace Pop	5,184	27,287	51,399	170,760
Average Household Income	\$98,275	\$99,093	\$113,217	\$127,716
Median Household Income	\$80,966	\$80,948	\$92,183	\$107,352
Total Housing Units	4,151	23,770	61,007	192,664
Median Home Value	\$401,217	\$432,143	\$468,899	\$568,909
Bachelors Degree	17.5%	19.9%	22.6%	25.5%
Graduate Degree	15.4%	13.5%	16.9%	20.7%

## Projections (2023)

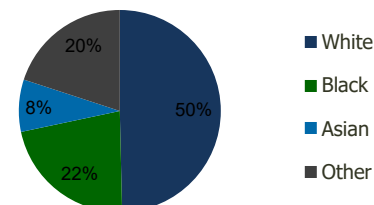
Projected Population	13,614	75,714	192,403	597,458
Projected 5 Year Pop Growth	2.5%	1.7%	1.4%	1.0%
Projected Households	4,669	25,869	65,417	202,668
Projected 5 Year Household Growth	2.4%	1.7%	1.4%	1.0%



Education (3-Mile)



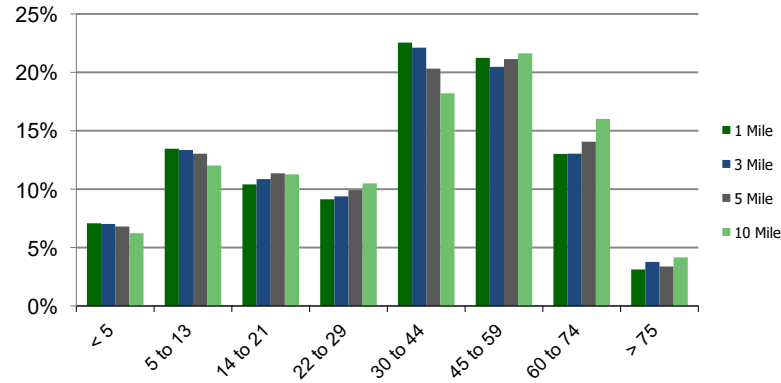
Daytime Population (3-Mile)



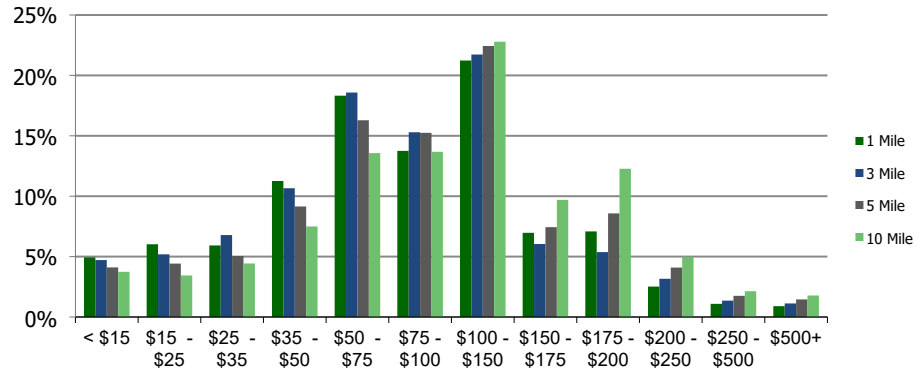
Ethnicity (3-Mile)

This report was produced using data from private and government sources deemed to be reliable and is herein provided without representation or warranty.

**Population by Age Range**



**Household Income by Income Range (\$000)**



**102250-Gordon Plaza**  
Woodbridge, VA

1.00 Mile  
Radius

3.00 Mile  
Radius

5.00 Mile  
Radius

10.00 Mile  
Radius

	1.00 Mile Radius	3.00 Mile Radius	5.00 Mile Radius	10.00 Mile Radius
<b>Population</b>	Current Estimated Population	12,040	69,452	179,386
	2010 Census Population	9,502	60,115	158,598
	2000 Census Population	8,464	51,996	128,395
	Historical Annual Growth 2000 to 2010	1.16%	1.46%	2.14%
	Estimated Annual Growth 2010 to 2012	2.46%	1.49%	1.27%
	Projected Annual Growth 2012 to 2019	2.49%	1.74%	1.41%
<b>Households</b>	Current Estimated Households	4,151	23,770	61,007
	2010 Census Households	3,321	20,630	53,944
	2000 Census Households	2,911	17,559	43,818
	Historical Annual Growth 2000 to 2010	1.3%	1.6%	2.1%
	Estimated Annual Growth 2010 to 2012	2.3%	1.5%	1.3%
	Projected Annual Growth 2012 to 2019	2.4%	1.7%	1.4%
	Population per Household	2.9	2.9	2.9
<b>Ethnicity</b>	White	50.6%	49.6%	50.3%
	Black or African American	20.6%	22.0%	23.8%
	Asian & Pacific Islander	7.4%	8.4%	10.1%
	Other Races	21.3%	20.0%	15.9%
	Hispanic or Latino Population	32.8%	31.7%	24.2%
	Non Hispanic or Latino Population	67.2%	68.3%	75.8%

This report was produced using data from private and government sources deemed to be reliable and is herein provided without representation or warranty.