

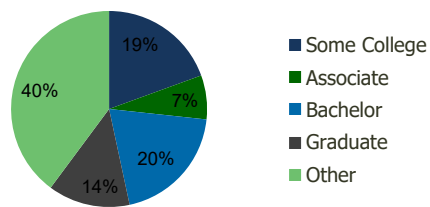
0225-Gordon Plaza Woodbridge, VA	1.00 Mile Radius	3.00 Mile Radius	5.00 Mile Radius	10.00 Mile Radius
-------------------------------------	---------------------	---------------------	---------------------	----------------------

Demographics (2018)

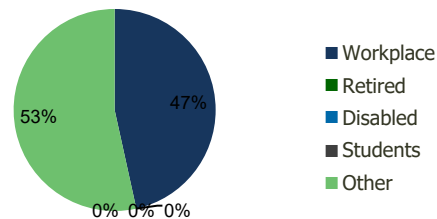
Current Population	12,095	69,529	179,284	567,735
Total Daytime Pop	11,342	58,954	141,784	447,720
Workplace Pop	5,334	27,445	51,301	169,000
Average Household Income	\$95,591	\$96,979	\$109,685	\$123,565
Median Household Income	\$79,372	\$79,994	\$89,176	\$103,509
Total Housing Units	4,169	23,794	60,971	192,652
Median Home Value	\$385,470	\$408,507	\$450,713	\$548,565
Bachelors Degree	17.6%	19.9%	22.6%	25.5%
Graduate Degree	15.3%	13.5%	16.9%	20.7%

Projections (2023)

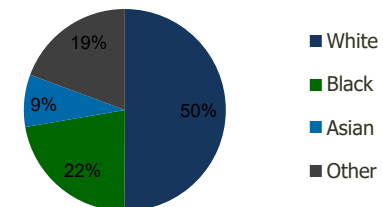
Projected Population	13,849	76,465	193,400	599,040
Projected 5 Year Pop Growth	2.7%	1.9%	1.5%	1.1%
Projected Households	4,744	26,109	65,745	203,216
Projected 5 Year Household Growth	2.6%	1.9%	1.5%	1.1%



Education (3-Mile)



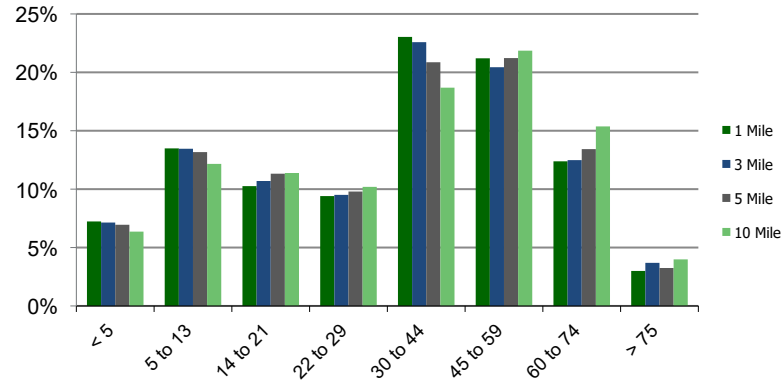
Daytime Population (3-Mile)



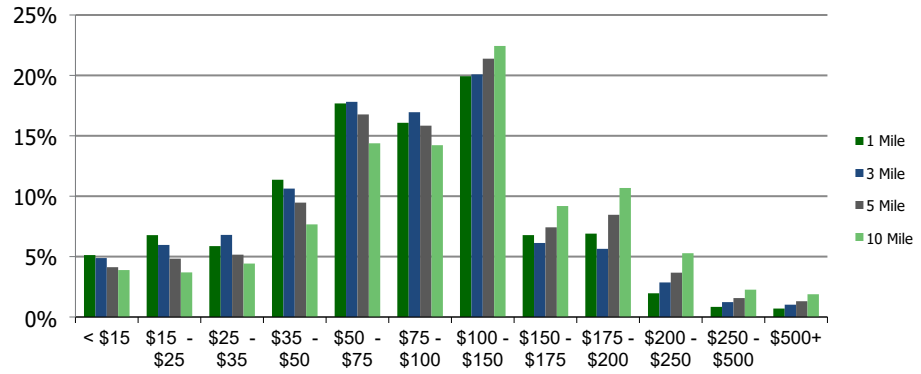
Ethnicity (3-Mile)

This report was produced using data from private and government sources deemed to be reliable and is herein provided without representation or warranty.

Population by Age Range



Household Income by Income Range (\$000)



0225-Gordon Plaza
Woodbridge, VA

1.00 Mile
Radius

3.00 Mile
Radius

5.00 Mile
Radius

10.00 Mile
Radius

	1.00 Mile Radius	3.00 Mile Radius	5.00 Mile Radius	10.00 Mile Radius
Population	Current Estimated Population	12,095	69,529	179,284
	2010 Census Population	9,502	60,115	158,598
	2000 Census Population	8,464	51,996	128,395
	Historical Annual Growth 2000 to 2010	1.16%	1.46%	2.14%
	Estimated Annual Growth 2010 to 2012	2.80%	1.68%	1.41%
	Projected Annual Growth 2012 to 2018	2.74%	1.92%	1.53%
Households	Current Estimated Households	4,169	23,794	60,971
	2010 Census Households	3,321	20,630	53,944
	2000 Census Households	2,911	17,559	43,818
	Historical Annual Growth 2000 to 2010	1.3%	1.6%	2.1%
	Estimated Annual Growth 2010 to 2012	2.6%	1.6%	1.4%
	Projected Annual Growth 2012 to 2018	2.6%	1.9%	1.5%
	Population per Household	2.9	2.9	2.9
Ethnicity	White	51.0%	50.1%	50.6%
	Black or African American	20.3%	22.2%	24.0%
	Asian & Pacific Islander	7.7%	8.4%	10.1%
	Other Races	21.0%	19.3%	15.4%
	Hispanic or Latino Population	34.1%	31.4%	23.8%
	Non Hispanic or Latino Population	65.9%	68.6%	76.2%

This report was produced using data from private and government sources deemed to be reliable and is herein provided without representation or warranty.