

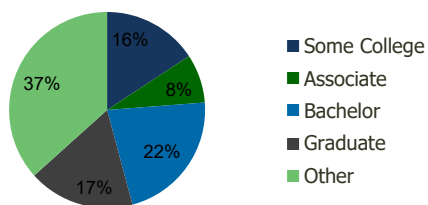
100280-Merrick Commons Merrick, NY	1.00 Mile Radius	3.00 Mile Radius	5.00 Mile Radius	10.00 Mile Radius
---------------------------------------	---------------------	---------------------	---------------------	----------------------

Demographics (2019)

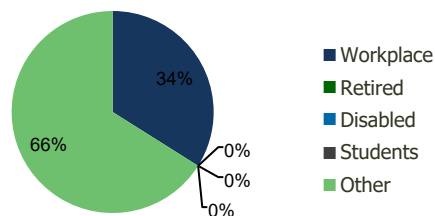
Current Population	14,900	153,370	383,065	1,272,321
Total Daytime Pop	14,186	124,959	334,064	1,323,675
Workplace Pop	7,213	42,414	121,765	583,269
Average Household Income	\$151,456	\$132,021	\$131,962	\$132,269
Median Household Income	\$131,212	\$110,379	\$108,720	\$107,119
Total Housing Units	4,894	48,801	123,272	420,348
Median Home Value	\$696,201	\$570,534	\$583,660	\$606,164
Bachelors Degree	24.0%	22.0%	22.2%	22.4%
Graduate Degree	25.3%	17.5%	17.2%	17.3%

Projections (2024)

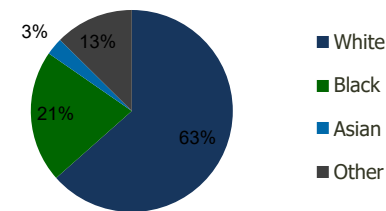
Projected Population	14,773	151,866	380,758	1,269,263
Projected 5 Year Pop Growth	-0.2%	-0.2%	-0.1%	0.0%
Projected Households	4,851	48,313	122,594	419,447
Projected 5 Year Household Growth	-0.2%	-0.2%	-0.1%	0.0%



Education (3-Mile)



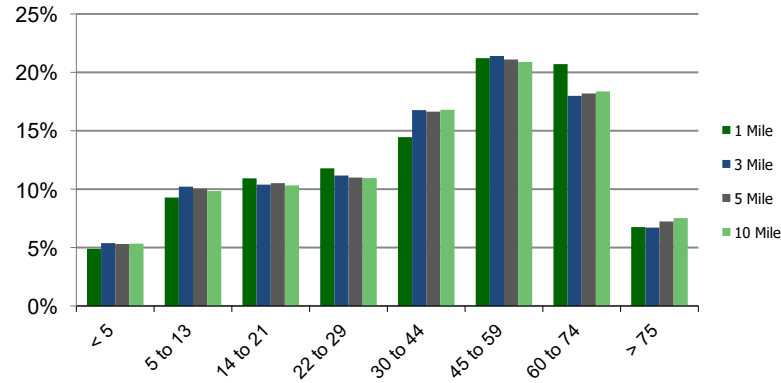
Daytime Population (3-Mile)



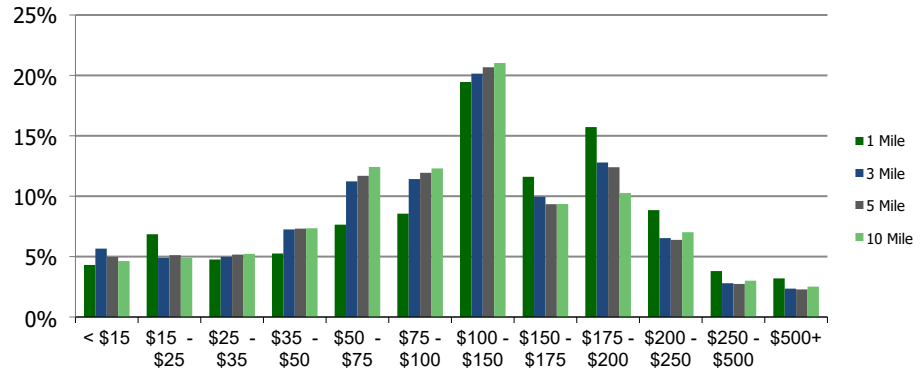
Ethnicity (3-Mile)

This report was produced using data from private and government sources deemed to be reliable and is herein provided without representation or warranty.

Population by Age Range



Household Income by Income Range (\$000)



100280-Merrick Commons Merrick, NY

1.00 Mile
Radius

3.00 Mile
Radius

5.00 Mile
Radius

10.00 Mile
Radius

	1.00 Mile Radius	3.00 Mile Radius	5.00 Mile Radius	10.00 Mile Radius
Population	Current Estimated Population	14,900	153,370	383,065
	2010 Census Population	14,930	152,680	378,802
	2000 Census Population	15,355	153,662	382,133
	Historical Annual Growth 2000 to 2010	-0.28%	-0.06%	-0.09%
	Estimated Annual Growth 2010 to 2019	-0.02%	0.05%	0.11%
	Projected Annual Growth 2019 to 2024	-0.17%	-0.20%	-0.12%
Households	Current Estimated Households	4,894	48,801	123,272
	2010 Census Households	4,903	48,589	121,652
	2000 Census Households	4,988	49,067	122,019
	Historical Annual Growth 2000 to 2010	-0.2%	-0.1%	0.0%
	Estimated Annual Growth 2010 to 2019	0.0%	0.0%	0.1%
	Projected Annual Growth 2019 to 2024	-0.2%	-0.2%	-0.1%
	Population per Household	3.0	3.1	3.1
Ethnicity	White	81.0%	63.5%	67.1%
	Black or African American	9.2%	21.2%	18.2%
	Asian & Pacific Islander	2.2%	2.8%	3.4%
	Other Races	7.6%	12.6%	11.3%
	Hispanic or Latino Population	15.8%	21.8%	19.5%
	Non Hispanic or Latino Population	84.2%	78.2%	80.5%

This report was produced using data from private and government sources deemed to be reliable and is herein provided without representation or warranty.