

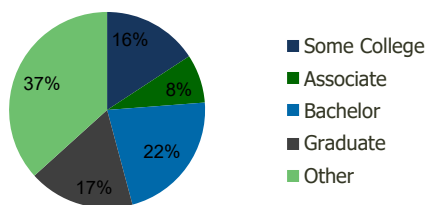
0028-Merrick Commons Merrick, NY	1.00 Mile Radius	3.00 Mile Radius	5.00 Mile Radius	10.00 Mile Radius
-------------------------------------	---------------------	---------------------	---------------------	----------------------

Demographics (2018)

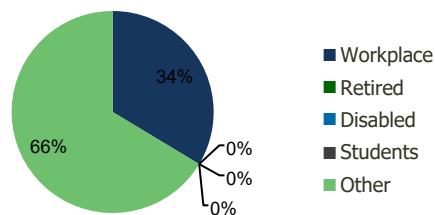
Current Population	14,923	153,532	383,893	1,274,864
Total Daytime Pop	14,174	125,065	333,257	1,321,066
Workplace Pop	7,161	42,054	120,537	579,113
Average Household Income	\$149,070	\$125,316	\$125,150	\$126,046
Median Household Income	\$126,138	\$104,581	\$102,701	\$101,769
Total Housing Units	4,902	48,854	123,585	421,019
Median Home Value	\$676,570	\$549,505	\$560,380	\$580,786
Bachelors Degree	24.0%	22.0%	22.2%	22.4%
Graduate Degree	25.3%	17.5%	17.2%	17.3%

Projections (2023)

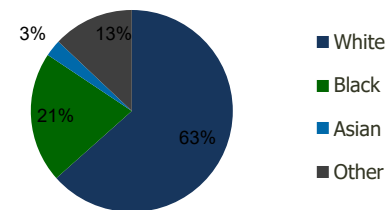
Projected Population	14,781	151,950	381,578	1,270,599
Projected 5 Year Pop Growth	-0.2%	-0.2%	-0.1%	-0.1%
Projected Households	4,853	48,337	122,914	419,695
Projected 5 Year Household Growth	-0.2%	-0.2%	-0.1%	-0.1%



Education (3-Mile)



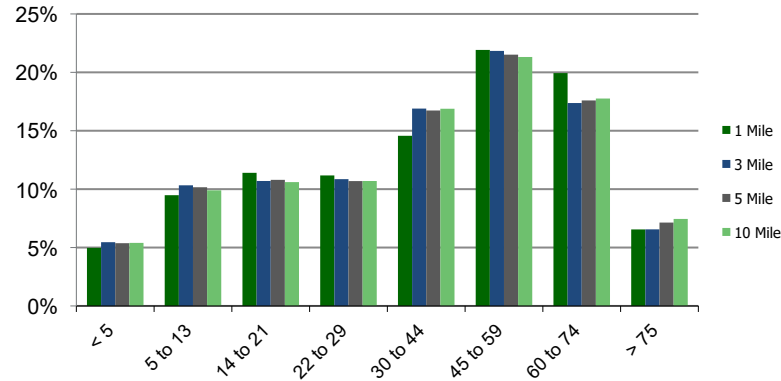
Daytime Population (3-Mile)



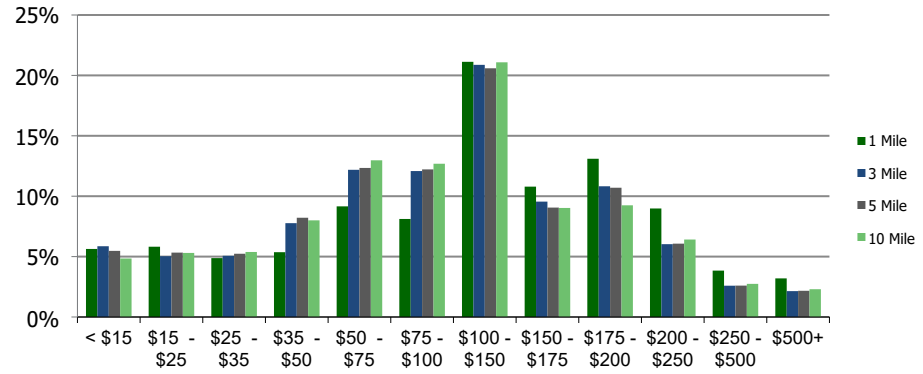
Ethnicity (3-Mile)

This report was produced using data from private and government sources deemed to be reliable and is herein provided without representation or warranty.

Population by Age Range



Household Income by Income Range (\$000)



0028-Merrick Commons Merrick, NY	1.00 Mile Radius	3.00 Mile Radius	5.00 Mile Radius	10.00 Mile Radius
--	------------------	------------------	------------------	-------------------

Population	Current Estimated Population	14,923	153,532	383,893	1,274,864
	2010 Census Population	14,930	152,656	379,581	1,260,584
	2000 Census Population	15,355	153,641	382,963	1,262,439
	Historical Annual Growth 2000 to 2010	-0.28%	-0.06%	-0.09%	-0.01%
	Estimated Annual Growth 2010 to 2012	-0.01%	0.07%	0.13%	0.13%
	Projected Annual Growth 2012 to 2018	-0.19%	-0.21%	-0.12%	-0.07%
Households	Current Estimated Households	4,902	48,854	123,585	421,019
	2010 Census Households	4,903	48,581	121,918	415,891
	2000 Census Households	4,988	49,059	122,306	416,973
	Historical Annual Growth 2000 to 2010	-0.2%	-0.1%	0.0%	0.0%
	Estimated Annual Growth 2010 to 2012	0.0%	0.1%	0.2%	0.1%
	Projected Annual Growth 2012 to 2018	-0.2%	-0.2%	-0.1%	-0.1%
	Population per Household	3.0	3.1	3.1	3.0
Ethnicity	White	80.8%	63.4%	67.1%	65.9%
	Black or African American	8.6%	20.9%	18.0%	17.1%
	Asian & Pacific Islander	2.3%	2.7%	3.3%	7.2%
	Other Races	8.3%	13.0%	11.6%	9.8%
	Hispanic or Latino Population	16.2%	21.9%	19.4%	16.4%
	Non Hispanic or Latino Population	83.8%	78.1%	80.6%	83.6%

This report was produced using data from private and government sources deemed to be reliable and is herein provided without representation or warranty.