

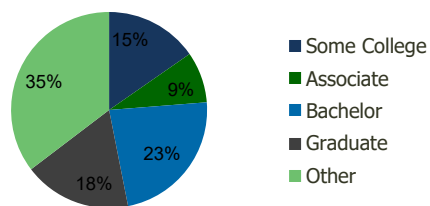
100280-Merrick Commons Merrick, NY	1.00 Mile Radius	3.00 Mile Radius	5.00 Mile Radius	10.00 Mile Radius
---------------------------------------	---------------------	---------------------	---------------------	----------------------

Demographics (2020)

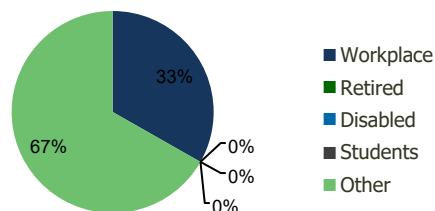
Current Population	15,008	153,691	383,315	1,272,566
Total Daytime Pop	14,216	126,620	338,035	1,338,754
Workplace Pop	7,123	42,070	119,898	573,287
Average Household Income	\$158,068	\$139,530	\$138,341	\$137,633
Median Household Income	\$134,404	\$116,866	\$113,597	\$111,408
Total Housing Units	4,928	48,898	123,358	420,445
Median Home Value	\$656,470	\$537,320	\$551,913	\$577,630
Bachelors Degree	25.8%	23.1%	23.0%	23.4%
Graduate Degree	23.8%	17.8%	18.0%	18.0%

Projections (2025)

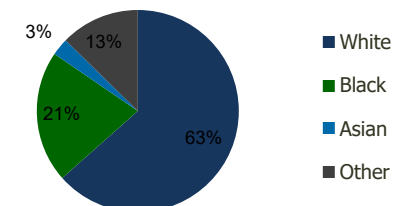
Projected Population	14,879	152,237	381,013	1,268,082
Projected 5 Year Pop Growth	-0.2%	-0.2%	-0.1%	-0.1%
Projected Households	4,885	48,424	122,667	419,039
Projected 5 Year Household Growth	-0.2%	-0.2%	-0.1%	-0.1%



Education (3-Mile)



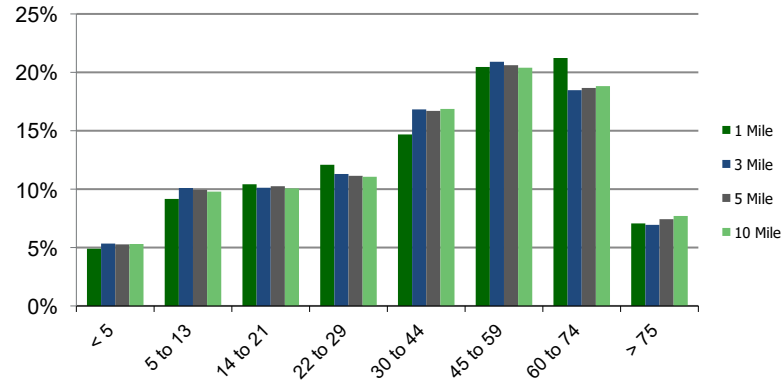
Daytime Population (3-Mile)



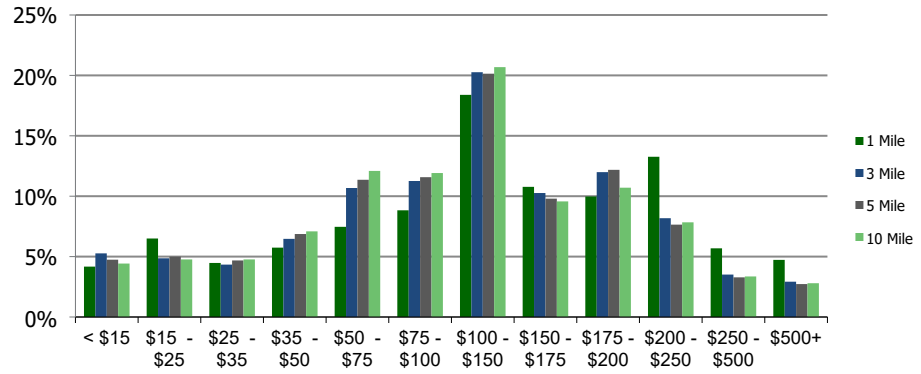
Ethnicity (3-Mile)

This report was produced using data from private and government sources deemed to be reliable and is herein provided without representation or warranty.

Population by Age Range



Household Income by Income Range (\$000)



100280-Merrick Commons Merrick, NY	1.00 Mile Radius	3.00 Mile Radius	5.00 Mile Radius	10.00 Mile Radius
---------------------------------------	---------------------	---------------------	---------------------	----------------------

Population	Current Estimated Population	15,008	153,691	383,315	1,272,566
	2010 Census Population	14,930	152,680	378,802	1,258,529
	2000 Census Population	15,355	153,662	382,133	1,260,385
	Historical Annual Growth 2000 to 2010	-0.28%	-0.06%	-0.09%	-0.01%
	Estimated Annual Growth 2010 to 2020	0.05%	0.06%	0.11%	0.10%
	Projected Annual Growth 2020 to 2025	-0.17%	-0.19%	-0.12%	-0.07%
Households	Current Estimated Households	4,928	48,898	123,358	420,445
	2010 Census Households	4,903	48,589	121,652	415,319
	2000 Census Households	4,988	49,067	122,019	416,392
	Historical Annual Growth 2000 to 2010	-0.2%	-0.1%	0.0%	0.0%
	Estimated Annual Growth 2010 to 2020	0.0%	0.1%	0.1%	0.1%
	Projected Annual Growth 2020 to 2025	-0.2%	-0.2%	-0.1%	-0.1%
	Population per Household	3.0	3.1	3.1	3.0
Ethnicity	White	80.8%	63.5%	66.7%	65.0%
	Black or African American	9.4%	21.1%	18.2%	17.3%
	Asian & Pacific Islander	2.0%	2.8%	3.4%	7.6%
	Other Races	7.8%	12.7%	11.6%	10.2%
	Hispanic or Latino Population	16.6%	22.4%	20.1%	16.8%
	Non Hispanic or Latino Population	83.4%	77.6%	79.9%	83.2%

This report was produced using data from private and government sources deemed to be reliable and is herein provided without representation or warranty.