

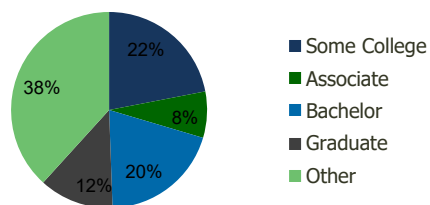
111870-Putty Hill Plaza Baltimore, MD	1.00 Mile Radius	3.00 Mile Radius	5.00 Mile Radius	10.00 Mile Radius
--	---------------------	---------------------	---------------------	----------------------

Demographics (2019)

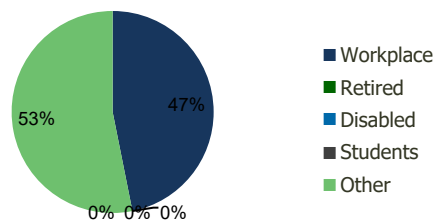
Current Population	13,187	137,471	319,881	969,321
Total Daytime Pop	16,321	126,919	297,083	1,226,081
Workplace Pop	8,122	59,470	124,872	577,399
Average Household Income	\$80,103	\$84,251	\$80,851	\$84,766
Median Household Income	\$68,342	\$68,842	\$63,581	\$60,663
Total Housing Units	5,234	56,804	127,983	391,230
Median Home Value	\$257,282	\$263,867	\$247,951	\$261,419
Bachelors Degree	20.3%	19.8%	18.1%	18.4%
Graduate Degree	13.9%	12.3%	12.1%	15.5%

Projections (2024)

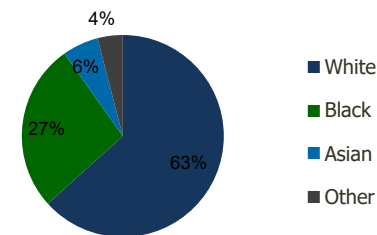
Projected Population	13,553	138,671	323,024	986,291
Projected 5 Year Pop Growth	0.5%	0.2%	0.2%	0.3%
Projected Households	5,365	57,271	129,237	399,028
Projected 5 Year Household Growth	0.5%	0.2%	0.2%	0.4%



Education (3-Mile)



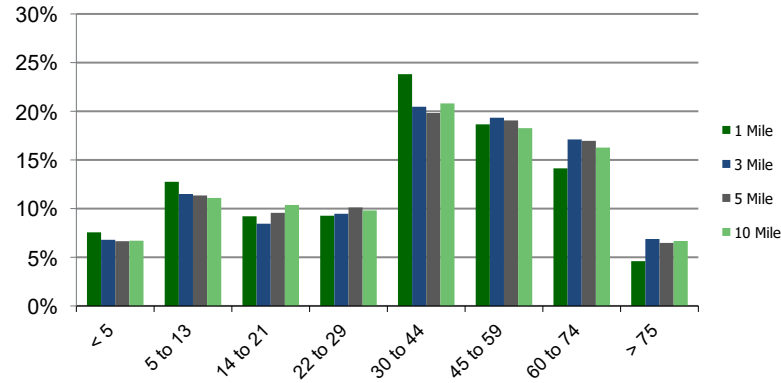
Daytime Population (3-Mile)



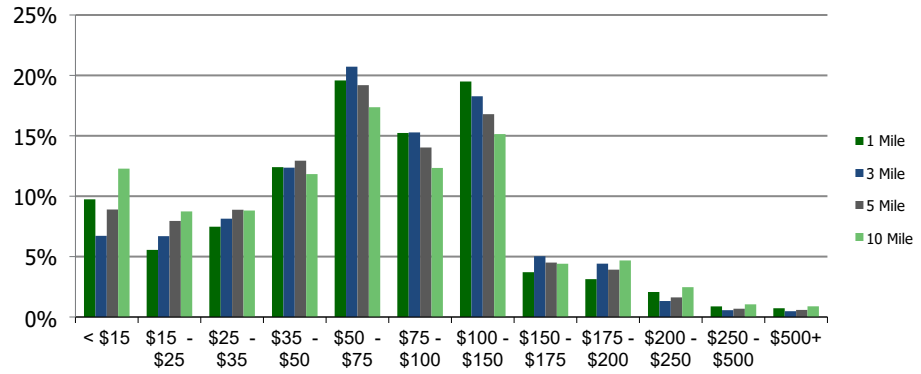
Ethnicity (3-Mile)

This report was produced using data from private and government sources deemed to be reliable and is herein provided without representation or warranty.

Population by Age Range



Household Income by Income Range (\$000)



111870-Putty Hill Plaza
Baltimore, MD

1.00 Mile
Radius

3.00 Mile
Radius

5.00 Mile
Radius

10.00 Mile
Radius

	1.00 Mile Radius	3.00 Mile Radius	5.00 Mile Radius	10.00 Mile Radius
Population	Current Estimated Population	13,187	137,471	319,881
	2010 Census Population	12,255	137,334	322,862
	2000 Census Population	11,509	131,566	310,363
	Historical Annual Growth 2000 to 2010	0.63%	0.43%	0.40%
	Estimated Annual Growth 2010 to 2019	0.75%	0.01%	-0.10%
	Projected Annual Growth 2019 to 2024	0.55%	0.17%	0.20%
Households	Current Estimated Households	5,234	56,804	127,983
	2010 Census Households	4,920	56,719	129,016
	2000 Census Households	4,871	54,372	124,941
	Historical Annual Growth 2000 to 2010	0.1%	0.4%	0.3%
	Estimated Annual Growth 2010 to 2019	0.6%	0.0%	-0.1%
	Projected Annual Growth 2019 to 2024	0.5%	0.2%	0.2%
	Population per Household	2.5	2.4	2.5
Ethnicity	White	63.1%	63.3%	53.1%
	Black or African American	23.4%	26.9%	38.5%
	Asian & Pacific Islander	9.4%	5.8%	4.5%
	Other Races	4.1%	4.0%	3.9%
	Hispanic or Latino Population	3.5%	4.2%	3.7%
	Non Hispanic or Latino Population	96.5%	95.8%	96.3%

This report was produced using data from private and government sources deemed to be reliable and is herein provided without representation or warranty.