

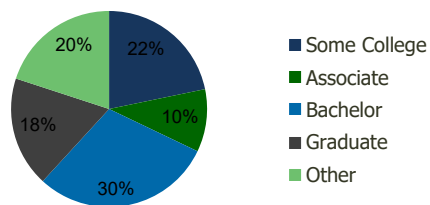
107800-Woodman Valley S.C. Colorado Springs, CO	1.00 Mile Radius	3.00 Mile Radius	5.00 Mile Radius	10.00 Mile Radius
--	---------------------	---------------------	---------------------	----------------------

Demographics (2020)

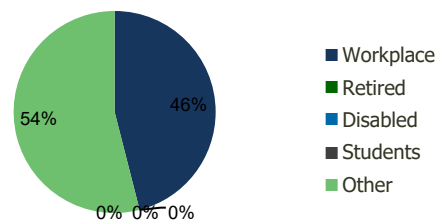
Current Population	9,412	85,287	219,818	513,229
Total Daytime Pop	16,918	110,463	259,018	575,432
Workplace Pop	12,019	50,840	107,442	252,441
Average Household Income	\$84,967	\$93,678	\$93,716	\$87,343
Median Household Income	\$66,781	\$76,217	\$75,487	\$67,341
Total Housing Units	4,094	33,674	85,927	200,618
Median Home Value	\$397,413	\$395,860	\$394,390	\$375,794
Bachelors Degree	25.9%	29.7%	27.9%	25.0%
Graduate Degree	15.5%	18.2%	18.5%	16.1%

Projections (2025)

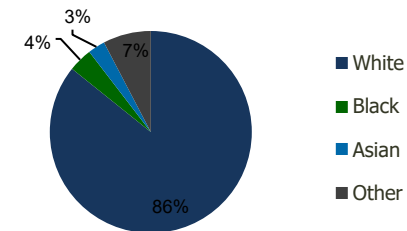
Projected Population	9,857	88,177	233,976	548,336
Projected 5 Year Pop Growth	0.9%	0.7%	1.3%	1.3%
Projected Households	4,290	34,839	90,987	213,110
Projected 5 Year Household Growth	0.9%	0.7%	1.2%	1.2%



Education (3-Mile)



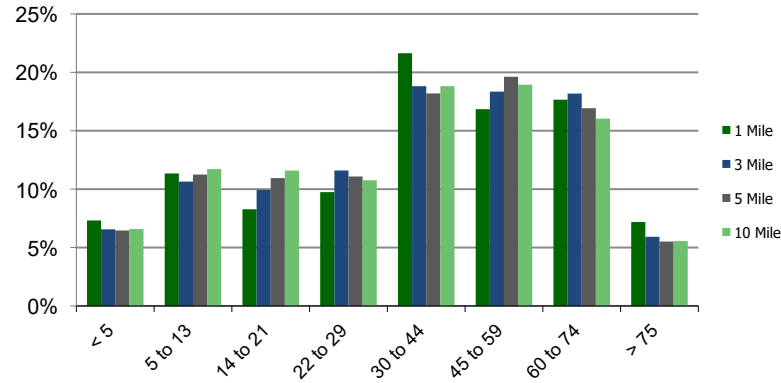
Daytime Population (3-Mile)



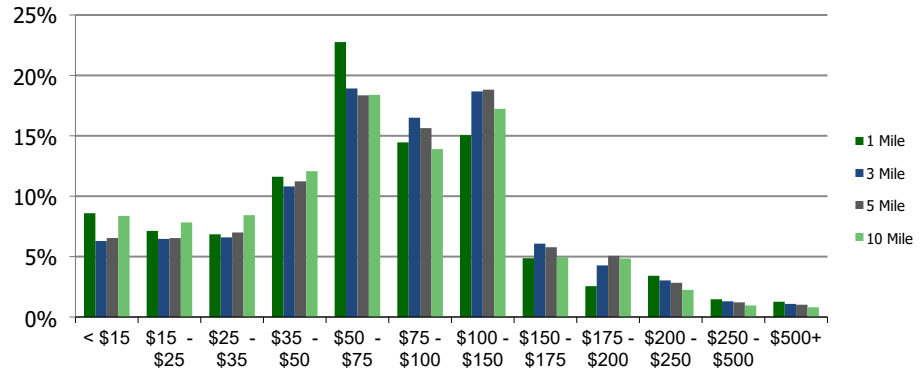
Ethnicity (3-Mile)

This report was produced using data from private and government sources deemed to be reliable and is herein provided without representation or warranty.

Population by Age Range



Household Income by Income Range (\$000)



107800-Woodman Valley S.C.
Colorado Springs, CO

1.00 Mile
Radius

3.00 Mile
Radius

5.00 Mile
Radius

10.00 Mile
Radius

	1.00 Mile Radius	3.00 Mile Radius	5.00 Mile Radius	10.00 Mile Radius
Population				
Current Estimated Population	9,412	85,287	219,818	513,229
2010 Census Population	8,167	78,613	193,931	449,208
2000 Census Population	8,015	75,937	170,343	383,204
Historical Annual Growth 2000 to 2010	0.19%	0.35%	1.31%	1.60%
Estimated Annual Growth 2010 to 2020	1.33%	0.76%	1.17%	1.25%
Projected Annual Growth 2020 to 2025	0.93%	0.67%	1.26%	1.33%
Households				
Current Estimated Households	4,094	33,674	85,927	200,618
2010 Census Households	3,543	30,937	76,437	177,233
2000 Census Households	3,264	27,719	64,288	148,315
Historical Annual Growth 2000 to 2010	0.8%	1.1%	1.7%	1.8%
Estimated Annual Growth 2010 to 2020	1.4%	0.8%	1.1%	1.2%
Projected Annual Growth 2020 to 2025	0.9%	0.7%	1.2%	1.2%
Population per Household	2.3	2.5	2.5	2.5
Ethnicity				
White	85.9%	85.8%	84.1%	79.9%
Black or African American	4.2%	3.8%	4.2%	5.9%
Asian & Pacific Islander	2.5%	2.7%	3.1%	2.8%
Other Races	7.5%	7.7%	8.6%	11.4%
Hispanic or Latino Population	10.0%	10.8%	12.3%	15.9%
Non Hispanic or Latino Population	90.0%	89.2%	87.7%	84.1%

This report was produced using data from private and government sources deemed to be reliable and is herein provided without representation or warranty.