

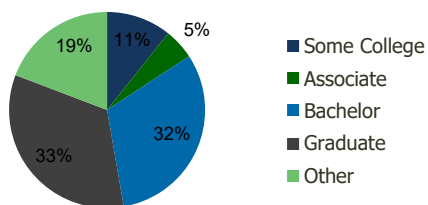
100200-Munsey Park Plaza Munsey Park, NY	1.00 Mile Radius	3.00 Mile Radius	5.00 Mile Radius	10.00 Mile Radius
---	---------------------	---------------------	---------------------	----------------------

Demographics (2019)

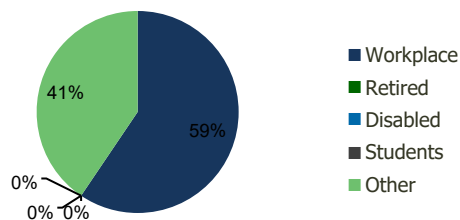
Current Population	10,800	95,020	297,081	1,899,828
Total Daytime Pop	13,972	132,139	408,797	2,026,460
Workplace Pop	7,928	78,563	213,121	808,186
Average Household Income	\$284,151	\$206,133	\$165,105	\$114,709
Median Household Income	\$177,631	\$140,873	\$114,319	\$83,179
Total Housing Units	3,608	33,762	106,862	647,976
Median Home Value	\$1,526,765	\$1,152,492	\$860,885	\$640,177
Bachelors Degree	36.5%	31.5%	28.1%	21.0%
Graduate Degree	39.4%	33.5%	26.6%	15.6%

Projections (2023)

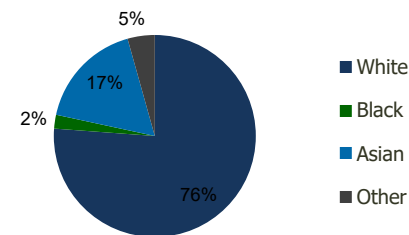
Projected Population	10,694	94,357	296,656	1,916,312
Projected 5 Year Pop Growth	-0.2%	-0.1%	0.0%	0.2%
Projected Households	3,575	33,548	106,869	654,183
Projected 5 Year Household Growth	-0.2%	-0.1%	0.0%	0.2%



Education (3-Mile)



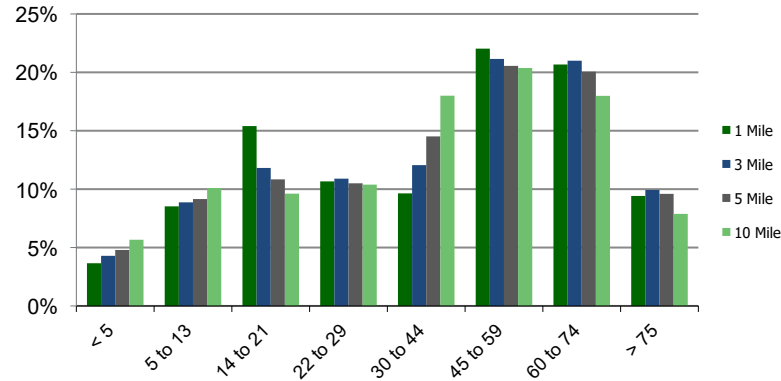
Daytime Population (3-Mile)



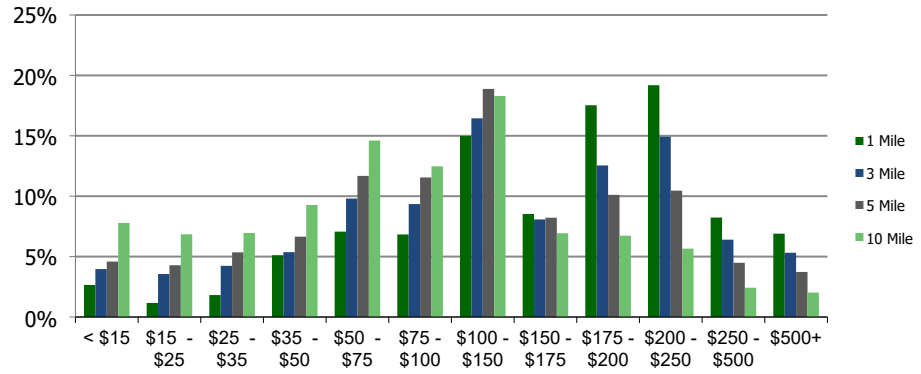
Ethnicity (3-Mile)

This report was produced using data from private and government sources deemed to be reliable and is herein provided without representation or warranty.

Population by Age Range



Household Income by Income Range (\$000)



	1.00 Mile Radius	3.00 Mile Radius	5.00 Mile Radius	10.00 Mile Radius
100200-Munsey Park Plaza				
Munsey Park, NY				

Population	Current Estimated Population	10,800	95,020	297,081	1,899,828
	2010 Census Population	10,754	94,535	295,415	1,904,231
	2000 Census Population	10,639	93,538	289,265	1,875,432
	Historical Annual Growth 2000 to 2010	0.11%	0.11%	0.21%	0.15%
	Estimated Annual Growth 2010 to 2012	0.04%	0.05%	0.06%	-0.02%
	Projected Annual Growth 2012 to 2019	-0.20%	-0.14%	-0.03%	0.17%
Households	Current Estimated Households	3,608	33,762	106,862	647,976
	2010 Census Households	3,579	33,493	105,913	650,081
	2000 Census Households	3,566	32,926	105,305	646,989
	Historical Annual Growth 2000 to 2010	0.0%	0.2%	0.1%	0.0%
	Estimated Annual Growth 2010 to 2012	0.1%	0.1%	0.1%	0.0%
	Projected Annual Growth 2012 to 2019	-0.2%	-0.1%	0.0%	0.2%
	Population per Household	3.0	2.8	2.7	2.9
Ethnicity	White	84.2%	76.2%	71.2%	47.8%
	Black or African American	0.6%	2.2%	2.9%	20.2%
	Asian & Pacific Islander	12.7%	17.3%	19.5%	19.6%
	Other Races	2.4%	4.4%	6.4%	12.5%
	Hispanic or Latino Population	4.1%	6.8%	10.5%	19.2%
	Non Hispanic or Latino Population	95.9%	93.2%	89.5%	80.8%

This report was produced using data from private and government sources deemed to be reliable and is herein provided without representation or warranty.