

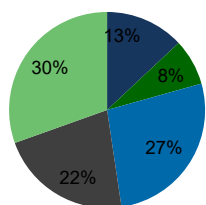
115920-Jericho Commons South Jericho, NY	1.00 Mile Radius	3.00 Mile Radius	5.00 Mile Radius	10.00 Mile Radius
---	---------------------	---------------------	---------------------	----------------------

Demographics (2019)

Current Population	12,078	105,124	249,912	1,173,774
Total Daytime Pop	21,598	154,079	367,729	1,480,350
Workplace Pop	14,482	86,417	188,907	727,221
Average Household Income	\$192,353	\$166,608	\$163,466	\$147,762
Median Household Income	\$144,156	\$127,287	\$122,848	\$112,174
Total Housing Units	4,206	32,549	80,224	385,800
Median Home Value	\$935,728	\$696,911	\$669,377	\$659,064
Bachelors Degree	34.1%	27.0%	25.7%	24.0%
Graduate Degree	31.5%	21.9%	21.5%	19.7%

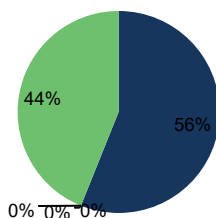
Projections (2024)

Projected Population	11,977	104,619	248,533	1,174,393
Projected 5 Year Pop Growth	-0.2%	-0.1%	-0.1%	0.0%
Projected Households	4,170	32,369	79,753	386,153
Projected 5 Year Household Growth	-0.2%	-0.1%	-0.1%	0.0%



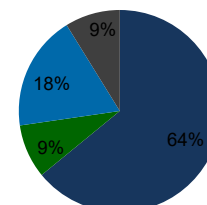
Education (3-Mile)

- Some College
- Associate
- Bachelor
- Graduate
- Other



Daytime Population (3-Mile)

- Workplace
- Retired
- Disabled
- Students
- Other

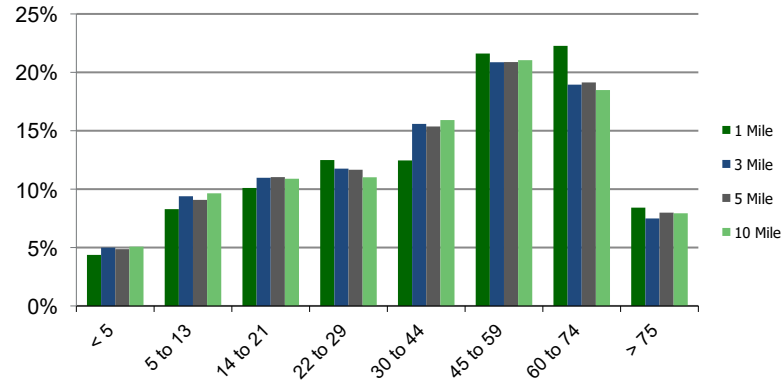


Ethnicity (3-Mile)

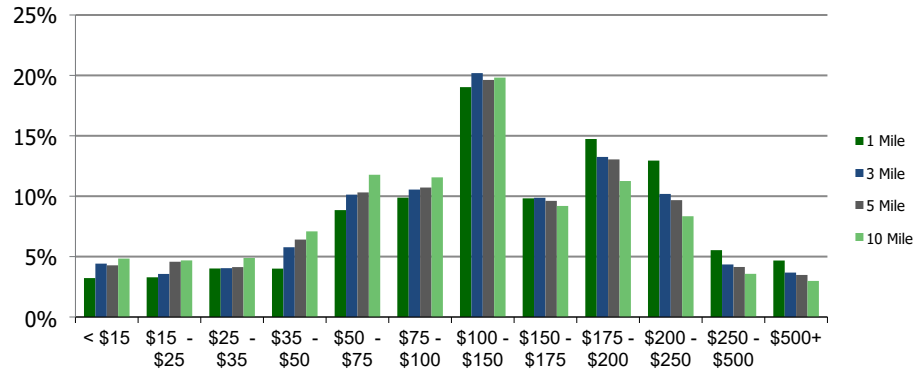
- White
- Black
- Asian
- Other

This report was produced using data from private and government sources deemed to be reliable and is herein provided without representation or warranty.

Population by Age Range



Household Income by Income Range (\$000)



115920-Jericho Commons South
Jericho, NY

1.00 Mile
Radius

3.00 Mile
Radius

5.00 Mile
Radius

10.00 Mile
Radius

	1.00 Mile Radius	3.00 Mile Radius	5.00 Mile Radius	10.00 Mile Radius
Population				
Current Estimated Population	12,078	105,124	249,912	1,173,774
2010 Census Population	11,994	104,183	247,909	1,165,068
2000 Census Population	11,788	101,242	243,148	1,148,587
Historical Annual Growth 2000 to 2010	0.17%	0.29%	0.19%	0.14%
Estimated Annual Growth 2010 to 2019	0.07%	0.09%	0.08%	0.08%
Projected Annual Growth 2019 to 2024	-0.17%	-0.10%	-0.11%	0.01%
Households				
Current Estimated Households	4,206	32,549	80,224	385,800
2010 Census Households	4,185	32,285	79,520	382,288
2000 Census Households	4,184	32,618	78,500	377,420
Historical Annual Growth 2000 to 2010	0.0%	-0.1%	0.1%	0.1%
Estimated Annual Growth 2010 to 2019	0.1%	0.1%	0.1%	0.1%
Projected Annual Growth 2019 to 2024	-0.2%	-0.1%	-0.1%	0.0%
Population per Household	2.9	3.2	3.0	3.0
Ethnicity				
White	67.0%	64.1%	73.5%	71.0%
Black or African American	2.6%	8.6%	5.6%	11.1%
Asian & Pacific Islander	27.3%	18.5%	13.4%	8.6%
Other Races	3.1%	8.8%	7.5%	9.4%
Hispanic or Latino Population	4.4%	13.8%	12.9%	15.9%
Non Hispanic or Latino Population	95.6%	86.2%	87.1%	84.1%

This report was produced using data from private and government sources deemed to be reliable and is herein provided without representation or warranty.