

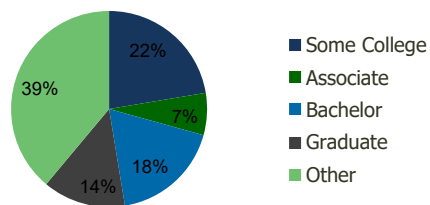
1052-Ingleside S.C. Baltimore, MD	1.00 Mile Radius	3.00 Mile Radius	5.00 Mile Radius	10.00 Mile Radius
--------------------------------------	---------------------	---------------------	---------------------	----------------------

Demographics (2018)

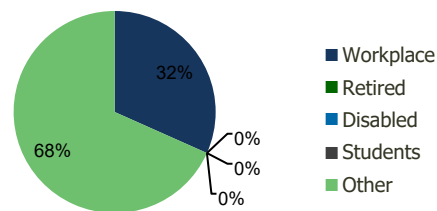
Current Population	20,639	130,487	335,863	1,133,665
Total Daytime Pop	16,984	158,602	386,908	1,516,275
Workplace Pop	7,474	50,217	138,986	737,840
Average Household Income	\$79,260	\$79,083	\$73,633	\$89,020
Median Household Income	\$67,022	\$61,825	\$55,523	\$64,514
Total Housing Units	8,183	50,890	128,392	446,964
Median Home Value	\$259,357	\$259,423	\$228,443	\$283,600
Bachelors Degree	16.0%	18.1%	15.6%	20.7%
Graduate Degree	14.9%	13.7%	11.8%	18.6%

Projections (2023)

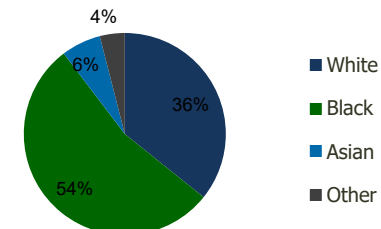
Projected Population	20,870	131,131	337,554	1,160,924
Projected 5 Year Pop Growth	0.2%	0.1%	0.1%	0.5%
Projected Households	8,284	51,182	129,126	458,442
Projected 5 Year Household Growth	0.2%	0.1%	0.1%	0.5%



Education (3-Mile)



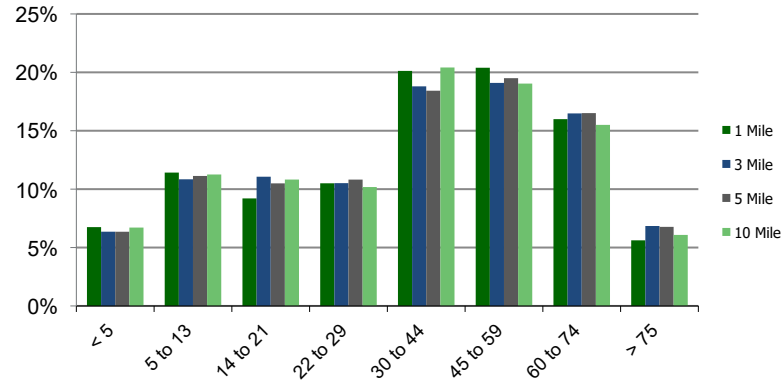
Daytime Population (3-Mile)



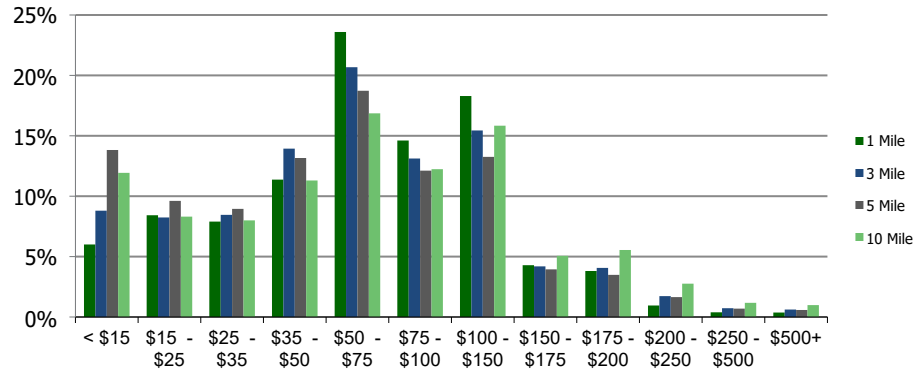
Ethnicity (3-Mile)

This report was produced using data from private and government sources deemed to be reliable and is herein provided without representation or warranty.

Population by Age Range



Household Income by Income Range (\$000)



1052-Ingleside S.C. Baltimore, MD	1.00 Mile Radius	3.00 Mile Radius	5.00 Mile Radius	10.00 Mile Radius
---	-------------------------	-------------------------	-------------------------	--------------------------

Population	Current Estimated Population	20,639	130,487	335,863	1,133,665
	2010 Census Population	20,679	131,145	340,165	1,108,509
	2000 Census Population	20,190	131,889	348,449	1,079,463
	Historical Annual Growth 2000 to 2010	0.24%	-0.06%	-0.24%	0.27%
	Estimated Annual Growth 2010 to 2012	-0.02%	-0.06%	-0.15%	0.26%
	Projected Annual Growth 2012 to 2018	0.22%	0.10%	0.10%	0.48%
Households	Current Estimated Households	8,183	50,890	128,392	446,964
	2010 Census Households	8,160	51,058	129,744	435,751
	2000 Census Households	8,157	51,728	133,154	424,366
	Historical Annual Growth 2000 to 2010	0.0%	-0.1%	-0.3%	0.3%
	Estimated Annual Growth 2010 to 2012	0.0%	0.0%	-0.1%	0.3%
	Projected Annual Growth 2012 to 2018	0.2%	0.1%	0.1%	0.5%
	Population per Household	2.5	2.5	2.5	2.4
Ethnicity	White	38.2%	35.8%	28.6%	42.4%
	Black or African American	51.1%	53.9%	62.1%	46.7%
	Asian & Pacific Islander	5.5%	6.3%	5.7%	6.1%
	Other Races	5.2%	4.0%	3.7%	4.7%
	Hispanic or Latino Population	5.2%	3.7%	3.2%	5.0%
	Non Hispanic or Latino Population	94.8%	96.3%	96.8%	95.0%

This report was produced using data from private and government sources deemed to be reliable and is herein provided without representation or warranty.