

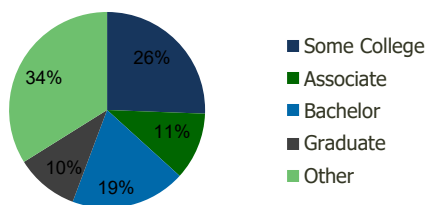
114640-Lakewood Village Windsor, CA	1.00 Mile Radius	3.00 Mile Radius	5.00 Mile Radius	10.00 Mile Radius
--	---------------------	---------------------	---------------------	----------------------

Demographics (2019)

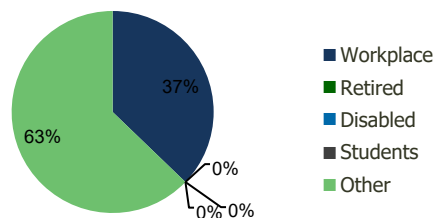
Current Population	15,159	30,885	43,225	207,438
Total Daytime Pop	11,003	29,408	43,623	251,814
Workplace Pop	3,701	10,937	17,859	95,027
Average Household Income	\$114,694	\$111,524	\$114,099	\$101,610
Median Household Income	\$99,463	\$93,146	\$89,039	\$77,033
Total Housing Units	5,245	10,542	15,363	77,910
Median Home Value	\$884,820	\$896,700	\$911,090	\$860,654
Bachelors Degree	20.0%	19.0%	19.9%	20.0%
Graduate Degree	10.4%	10.4%	11.2%	11.2%

Projections (2024)

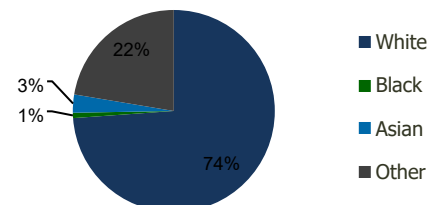
Projected Population	15,353	31,337	43,762	211,341
Projected 5 Year Pop Growth	0.3%	0.3%	0.2%	0.4%
Projected Households	5,303	10,688	15,554	79,433
Projected 5 Year Household Growth	0.2%	0.3%	0.2%	0.4%



Education (3-Mile)



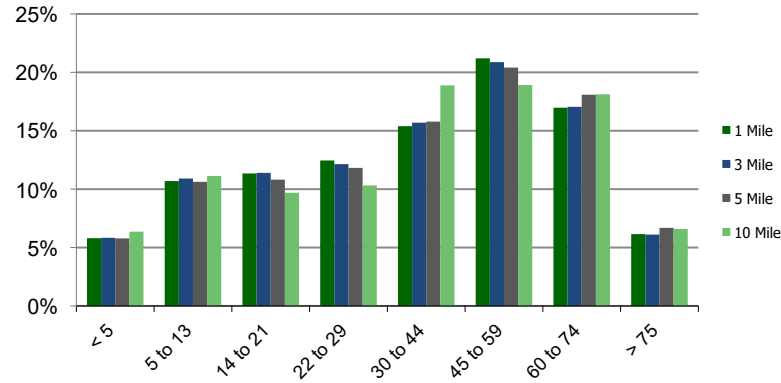
Daytime Population (3-Mile)



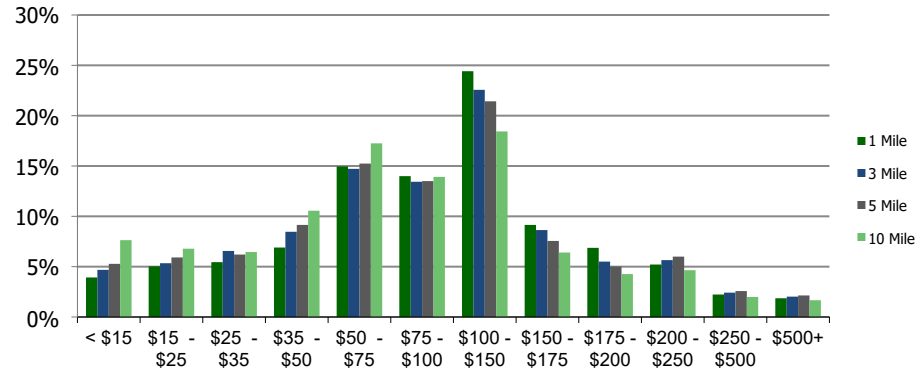
Ethnicity (3-Mile)

This report was produced using data from private and government sources deemed to be reliable and is herein provided without representation or warranty.

Population by Age Range



Household Income by Income Range (\$000)



114640-Lakewood Village Windsor, CA	1.00 Mile Radius	3.00 Mile Radius	5.00 Mile Radius	10.00 Mile Radius
---	------------------	------------------	------------------	-------------------

Population	Current Estimated Population	15,159	30,885	43,225	207,438
	2010 Census Population	14,916	30,155	42,965	205,945
	2000 Census Population	13,585	26,119	38,418	191,435
	Historical Annual Growth 2000 to 2010	0.94%	1.45%	1.12%	0.73%
	Estimated Annual Growth 2010 to 2019	0.17%	0.25%	0.06%	0.07%
	Projected Annual Growth 2019 to 2024	0.25%	0.29%	0.25%	0.37%
Households	Current Estimated Households	5,245	10,542	15,363	77,910
	2010 Census Households	5,182	10,299	15,277	77,180
	2000 Census Households	4,714	8,843	13,470	70,919
	Historical Annual Growth 2000 to 2010	1.0%	1.5%	1.3%	0.8%
	Estimated Annual Growth 2010 to 2019	0.1%	0.2%	0.1%	0.1%
	Projected Annual Growth 2019 to 2024	0.2%	0.3%	0.2%	0.4%
	Population per Household	2.9	2.9	2.8	2.6
Ethnicity	White	74.8%	73.9%	75.2%	72.6%
	Black or African American	0.7%	0.8%	0.9%	1.8%
	Asian & Pacific Islander	2.7%	2.9%	3.0%	3.9%
	Other Races	21.8%	22.4%	20.8%	21.7%
	Hispanic or Latino Population	31.9%	31.8%	29.1%	29.2%
	Non Hispanic or Latino Population	68.1%	68.2%	70.9%	70.8%

This report was produced using data from private and government sources deemed to be reliable and is herein provided without representation or warranty.