

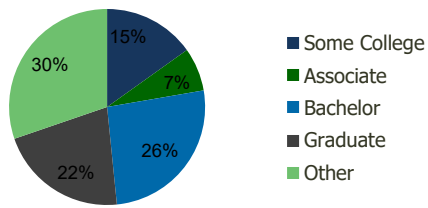
116600-Turnpike Plaza Huntington Station, NY	1.00 Mile Radius	3.00 Mile Radius	5.00 Mile Radius	10.00 Mile Radius
---	---------------------	---------------------	---------------------	----------------------

Demographics (2021)

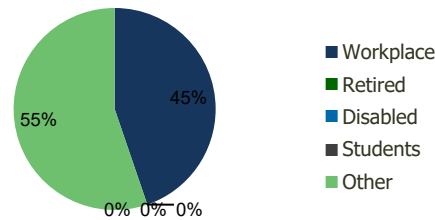
Current Population	12,058	87,348	195,159	790,980
Total Daytime Pop	10,076	88,249	231,085	907,643
Workplace Pop	3,780	39,496	116,666	455,718
Average Household Income	\$135,538	\$147,576	\$169,749	\$151,591
Median Household Income	\$110,921	\$113,152	\$128,022	\$116,250
Total Housing Units	4,061	28,789	66,310	255,695
Median Home Value	\$635,386	\$692,955	\$769,770	\$653,133
Bachelors Degree	26.6%	26.1%	27.2%	23.0%
Graduate Degree	18.8%	21.3%	25.9%	18.7%

Projections (2026)

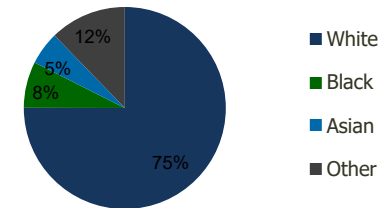
Projected Population	12,101	88,047	196,222	791,670
Projected 5 Year Pop Growth	0.1%	0.2%	0.1%	0.0%
Projected Households	4,077	29,021	66,663	255,871
Projected 5 Year Household Growth	0.1%	0.2%	0.1%	0.0%



Education (3-Mile)



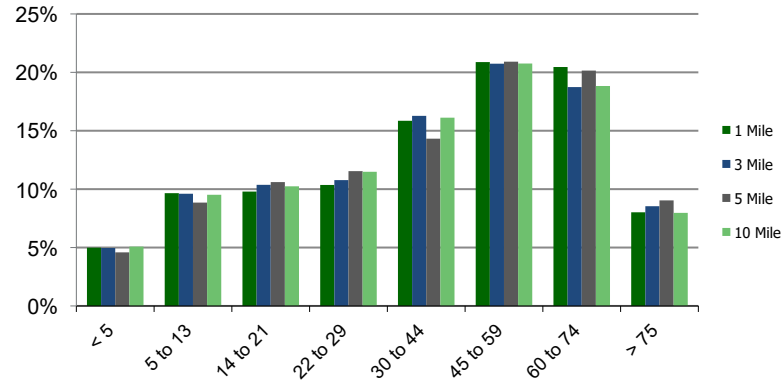
Daytime Population (3-Mile)



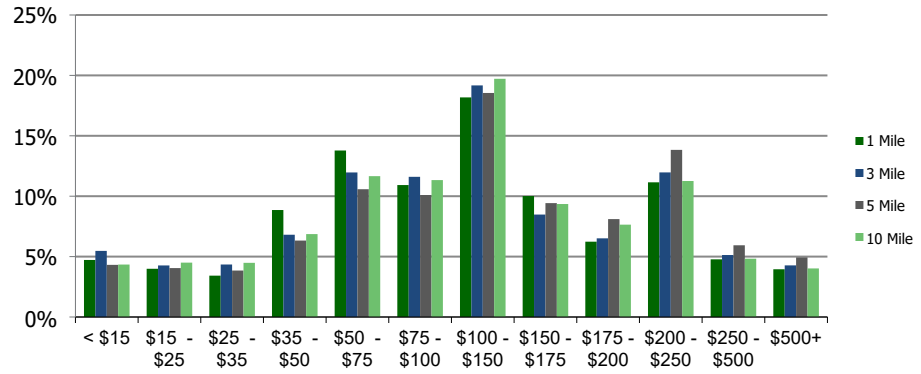
Ethnicity (3-Mile)

This report was produced using data from private and government sources deemed to be reliable and is herein provided without representation or warranty.

Population by Age Range



Household Income by Income Range (\$000)



11660-Turnpike Plaza Huntington Station, NY	1.00 Mile Radius	3.00 Mile Radius	5.00 Mile Radius	10.00 Mile Radius
--	-----------------------------	-----------------------------	-----------------------------	------------------------------

Population	Current Estimated Population	12,058	87,348	195,159	790,980
	2010 Census Population	11,832	85,421	191,176	778,572
	2000 Census Population	11,536	79,792	183,261	757,558
	Historical Annual Growth 2000 to 2010	0.25%	0.68%	0.42%	0.27%
	Estimated Annual Growth 2010 to 2020	0.16%	0.19%	0.18%	0.13%
	Projected Annual Growth 2020 to 2025	0.07%	0.16%	0.11%	0.02%
Households	Current Estimated Households	4,061	28,789	66,310	255,695
	2010 Census Households	3,981	28,057	64,863	251,367
	2000 Census Households	3,894	26,290	61,485	244,186
	Historical Annual Growth 2000 to 2010	0.2%	0.7%	0.5%	0.3%
	Estimated Annual Growth 2010 to 2020	0.2%	0.2%	0.2%	0.1%
	Projected Annual Growth 2020 to 2025	0.1%	0.2%	0.1%	0.0%
	Population per Household	2.9	3.0	2.9	3.1
Ethnicity	White	77.1%	75.0%	82.1%	75.8%
	Black or African American	8.8%	7.4%	5.0%	8.3%
	Asian & Pacific Islander	5.9%	5.3%	6.2%	6.8%
	Other Races	8.3%	12.3%	6.8%	9.1%
	Hispanic or Latino Population	15.5%	19.3%	11.7%	18.4%
	Non Hispanic or Latino Population	84.5%	80.7%	88.3%	81.6%

This report was produced using data from private and government sources deemed to be reliable and is herein provided without representation or warranty.