

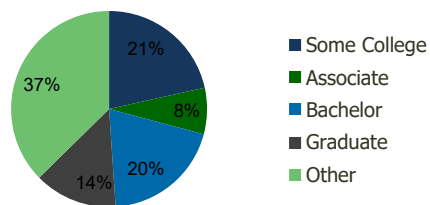
110480-Fullerton Plaza Baltimore, MD	1.00 Mile Radius	3.00 Mile Radius	5.00 Mile Radius	10.00 Mile Radius
---	---------------------	---------------------	---------------------	----------------------

Demographics (2020)

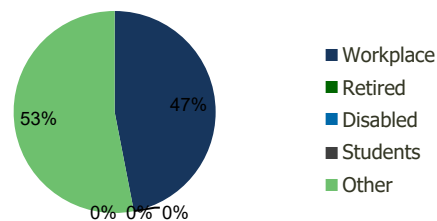
Current Population	12,479	134,614	317,658	957,661
Total Daytime Pop	14,448	130,845	296,948	1,227,657
Workplace Pop	7,942	61,429	122,008	574,895
Average Household Income	\$79,430	\$88,948	\$84,534	\$88,701
Median Household Income	\$68,177	\$70,751	\$66,022	\$63,316
Total Housing Units	4,968	55,578	127,006	386,331
Median Home Value	\$260,842	\$262,486	\$244,913	\$258,509
Bachelors Degree	19.0%	19.8%	18.6%	19.1%
Graduate Degree	14.3%	13.7%	12.7%	16.0%

Projections (2025)

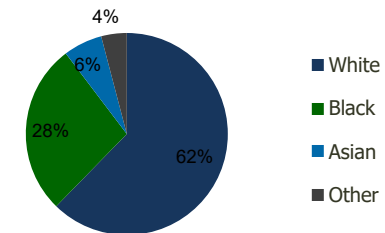
Projected Population	12,779	135,613	320,583	972,969
Projected 5 Year Pop Growth	0.5%	0.1%	0.2%	0.3%
Projected Households	5,075	55,960	128,150	393,342
Projected 5 Year Household Growth	0.4%	0.1%	0.2%	0.4%



Education (3-Mile)



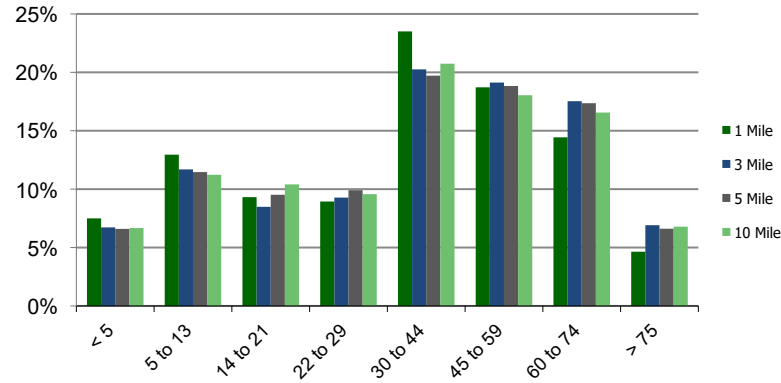
Daytime Population (3-Mile)



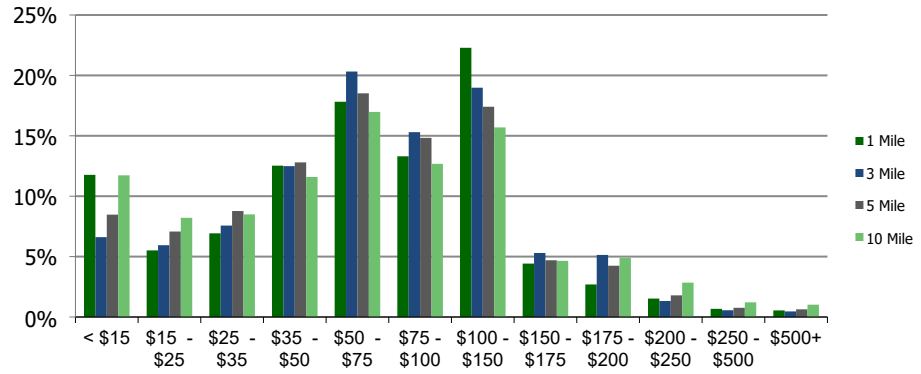
Ethnicity (3-Mile)

This report was produced using data from private and government sources deemed to be reliable and is herein provided without representation or warranty.

Population by Age Range



Household Income by Income Range (\$000)



	110480-Fullerton Plaza Baltimore, MD	1.00 Mile Radius	3.00 Mile Radius	5.00 Mile Radius	10.00 Mile Radius
--	--	------------------	------------------	------------------	-------------------

Population	Current Estimated Population	12,479	134,614	317,658	957,661
	2010 Census Population	11,689	134,703	320,775	965,464
	2000 Census Population	10,813	128,680	307,851	960,353
	Historical Annual Growth 2000 to 2010	0.78%	0.46%	0.41%	0.05%
	Estimated Annual Growth 2010 to 2020	0.61%	-0.01%	-0.09%	-0.08%
	Projected Annual Growth 2020 to 2025	0.48%	0.15%	0.18%	0.32%
Households	Current Estimated Households	4,968	55,578	127,006	386,331
	2010 Census Households	4,707	55,604	128,159	387,734
	2000 Census Households	4,620	53,161	124,024	387,635
	Historical Annual Growth 2000 to 2010	0.2%	0.5%	0.3%	0.0%
	Estimated Annual Growth 2010 to 2020	0.5%	0.0%	-0.1%	0.0%
	Projected Annual Growth 2020 to 2025	0.4%	0.1%	0.2%	0.4%
	Population per Household	2.5	2.4	2.5	2.4
Ethnicity	White	57.8%	62.3%	52.8%	52.7%
	Black or African American	25.9%	27.4%	38.5%	38.7%
	Asian & Pacific Islander	12.3%	6.2%	4.7%	4.1%
	Other Races	4.0%	4.1%	4.0%	4.4%
	Hispanic or Latino Population	3.1%	4.5%	3.9%	4.8%
	Non Hispanic or Latino Population	96.9%	95.5%	96.1%	95.2%

This report was produced using data from private and government sources deemed to be reliable and is herein provided without representation or warranty.