

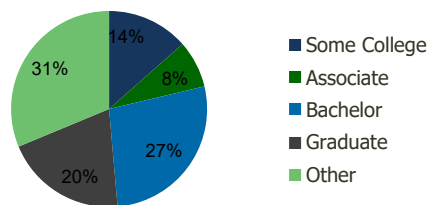
111370-Hicksville Plaza Hicksville, NY	1.00 Mile Radius	3.00 Mile Radius	5.00 Mile Radius	10.00 Mile Radius
---	---------------------	---------------------	---------------------	----------------------

Demographics (2020)

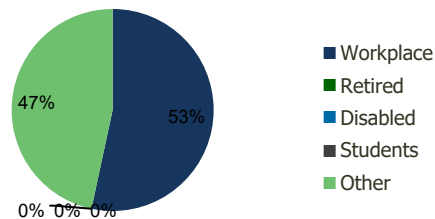
Current Population	17,665	132,825	282,154	1,233,127
Total Daytime Pop	23,745	169,591	424,069	1,533,102
Workplace Pop	16,063	90,506	207,462	732,125
Average Household Income	\$144,696	\$156,619	\$159,072	\$152,758
Median Household Income	\$110,616	\$126,053	\$124,375	\$116,655
Total Housing Units	5,866	41,854	90,842	404,154
Median Home Value	\$632,562	\$629,344	\$611,235	\$614,027
Bachelors Degree	26.5%	27.3%	26.0%	24.6%
Graduate Degree	18.5%	20.1%	20.5%	20.3%

Projections (2025)

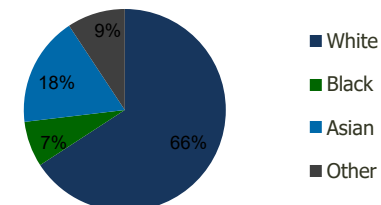
Projected Population	17,507	132,412	281,010	1,230,310
Projected 5 Year Pop Growth	-0.2%	-0.1%	-0.1%	0.0%
Projected Households	5,812	41,697	90,470	403,320
Projected 5 Year Household Growth	-0.2%	-0.1%	-0.1%	0.0%



Education (3-Mile)



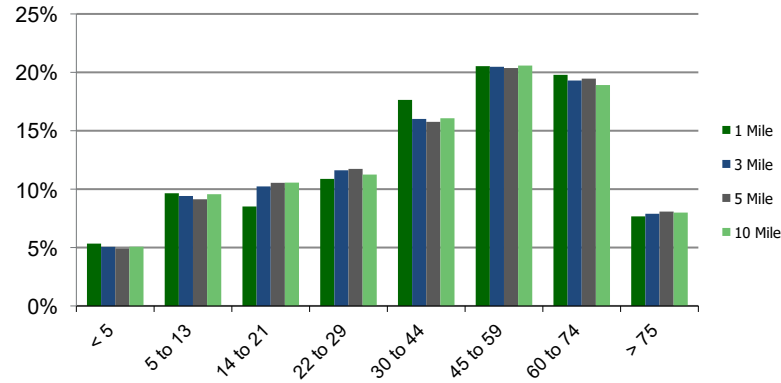
Daytime Population (3-Mile)



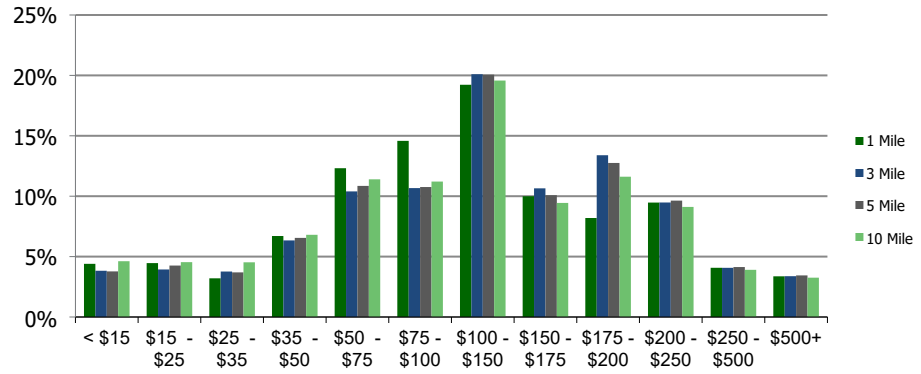
Ethnicity (3-Mile)

This report was produced using data from private and government sources deemed to be reliable and is herein provided without representation or warranty.

Population by Age Range



Household Income by Income Range (\$000)



111370-Hicksville Plaza Hicksville, NY		1.00 Mile Radius	3.00 Mile Radius	5.00 Mile Radius	10.00 Mile Radius
--	--	------------------	------------------	------------------	-------------------

Population	Current Estimated Population	17,665	132,825	282,154	1,233,127
	2010 Census Population	17,563	131,360	279,085	1,223,875
	2000 Census Population	17,527	128,971	273,689	1,207,158
	Historical Annual Growth 2000 to 2010	0.02%	0.18%	0.20%	0.14%
	Estimated Annual Growth 2010 to 2020	0.05%	0.10%	0.10%	0.07%
	Projected Annual Growth 2020 to 2025	-0.18%	-0.06%	-0.08%	-0.05%
Households	Current Estimated Households	5,866	41,854	90,842	404,154
	2010 Census Households	5,840	41,398	89,744	400,374
	2000 Census Households	5,979	41,691	88,543	395,502
	Historical Annual Growth 2000 to 2010	-0.2%	-0.1%	0.1%	0.1%
	Estimated Annual Growth 2010 to 2020	0.0%	0.1%	0.1%	0.1%
	Projected Annual Growth 2020 to 2025	-0.2%	-0.1%	-0.1%	0.0%
	Population per Household	3.0	3.1	3.0	3.0
Ethnicity	White	64.1%	65.8%	73.3%	70.2%
	Black or African American	2.3%	7.3%	5.3%	11.3%
	Asian & Pacific Islander	26.6%	17.6%	13.4%	8.6%
	Other Races	7.1%	9.3%	8.0%	9.9%
	Hispanic or Latino Population	12.5%	14.3%	13.2%	16.5%
	Non Hispanic or Latino Population	87.5%	85.7%	86.8%	83.5%

This report was produced using data from private and government sources deemed to be reliable and is herein provided without representation or warranty.