

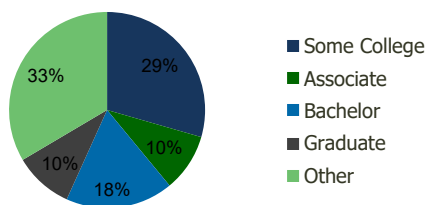
107620-Palm Plaza S.C. Temecula, CA	1.00 Mile Radius	3.00 Mile Radius	5.00 Mile Radius	10.00 Mile Radius
--	---------------------	---------------------	---------------------	----------------------

## Demographics (2019)

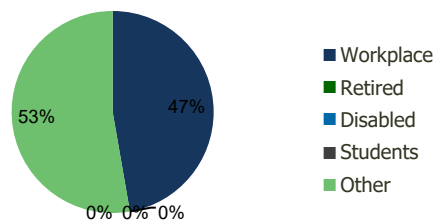
Current Population	8,235	81,404	184,958	356,114
Total Daytime Pop	25,151	96,965	193,032	307,759
Workplace Pop	15,941	45,822	70,772	83,800
Average Household Income	\$98,512	\$100,658	\$103,563	\$109,471
Median Household Income	\$77,161	\$79,523	\$83,744	\$90,313
Total Housing Units	2,814	27,103	59,469	110,970
Median Home Value	\$796,812	\$708,352	\$707,144	\$720,987
Bachelors Degree	14.0%	17.8%	19.8%	19.7%
Graduate Degree	10.6%	9.7%	10.3%	10.4%

## Projections (2024)

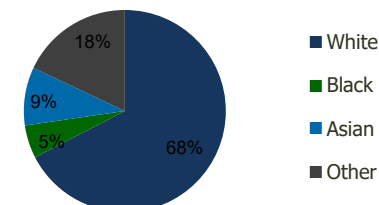
Projected Population	9,364	90,543	207,454	404,179
Projected 5 Year Pop Growth	2.6%	2.2%	2.3%	2.6%
Projected Households	3,205	30,158	66,724	125,801
Projected 5 Year Household Growth	2.6%	2.2%	2.3%	2.5%



Education (3-Mile)



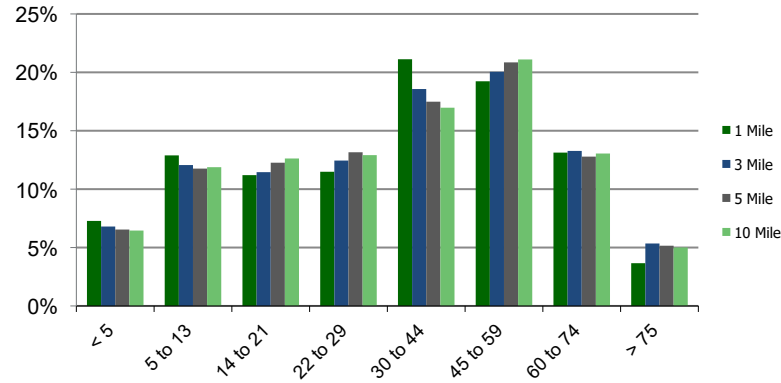
Daytime Population (3-Mile)



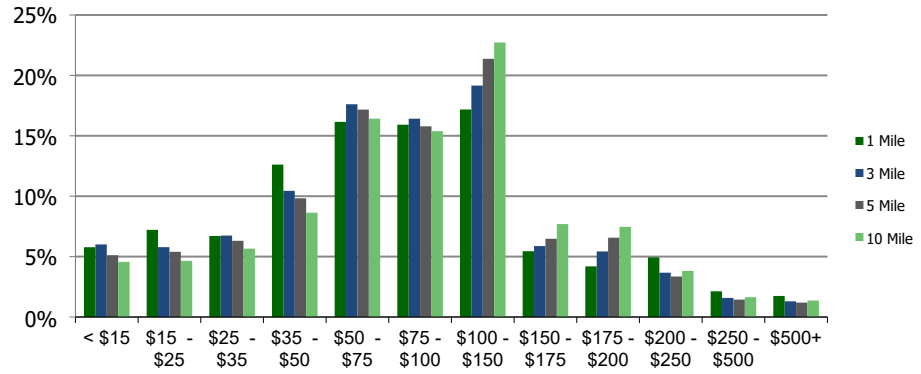
Ethnicity (3-Mile)

This report was produced using data from private and government sources deemed to be reliable and is herein provided without representation or warranty.

**Population by Age Range**



**Household Income by Income Range (\$000)**



**107620-Palm Plaza S.C.**  
Temecula, CA

1.00 Mile  
Radius

3.00 Mile  
Radius

5.00 Mile  
Radius

10.00 Mile  
Radius

	1.00 Mile Radius	3.00 Mile Radius	5.00 Mile Radius	10.00 Mile Radius
<b>Population</b>				
Current Estimated Population	8,235	81,404	184,958	356,114
2010 Census Population	6,364	71,114	157,773	295,454
2000 Census Population	4,376	43,473	96,376	153,683
Historical Annual Growth 2000 to 2010	3.82%	5.04%	5.05%	6.75%
Estimated Annual Growth 2010 to 2019	2.68%	1.40%	1.64%	1.93%
Projected Annual Growth 2019 to 2024	2.60%	2.15%	2.32%	2.56%
<b>Households</b>				
Current Estimated Households	2,814	27,103	59,469	110,970
2010 Census Households	2,159	23,682	50,691	92,223
2000 Census Households	1,586	14,480	31,105	49,546
Historical Annual Growth 2000 to 2010	3.1%	5.0%	5.0%	6.4%
Estimated Annual Growth 2010 to 2019	2.8%	1.4%	1.7%	1.9%
Projected Annual Growth 2019 to 2024	2.6%	2.2%	2.3%	2.5%
Population per Household	2.9	3.0	3.1	3.2
<b>Ethnicity</b>				
White	70.9%	67.4%	69.0%	68.9%
Black or African American	6.5%	5.3%	5.0%	5.2%
Asian & Pacific Islander	8.8%	9.3%	9.3%	9.1%
Other Races	13.8%	18.0%	16.7%	16.9%
Hispanic or Latino Population	27.7%	29.4%	27.5%	27.2%
Non Hispanic or Latino Population	72.3%	70.6%	72.5%	72.8%

This report was produced using data from private and government sources deemed to be reliable and is herein provided without representation or warranty.