

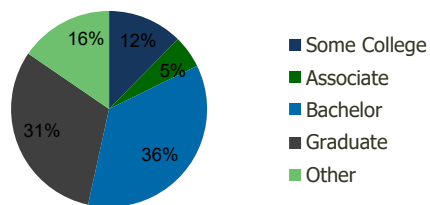
105470-Costco Plaza Fairfax, VA	1.00 Mile Radius	3.00 Mile Radius	5.00 Mile Radius	10.00 Mile Radius
------------------------------------	---------------------	---------------------	---------------------	----------------------

## Demographics (2020)

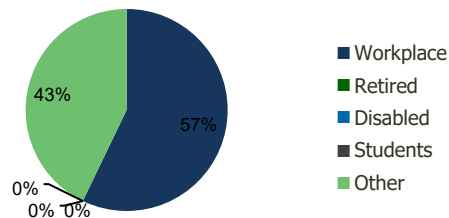
Current Population	11,037	91,565	247,637	885,499
Total Daytime Pop	10,966	106,216	312,391	1,183,325
Workplace Pop	5,486	60,696	143,648	613,078
Average Household Income	\$128,546	\$150,483	\$157,859	\$152,435
Median Household Income	\$107,844	\$121,543	\$128,016	\$123,341
Total Housing Units	4,662	35,443	87,296	314,705
Median Home Value	\$660,853	\$681,036	\$680,954	\$669,534
Bachelors Degree	37.3%	35.7%	34.0%	31.3%
Graduate Degree	33.2%	31.1%	30.9%	29.2%

## Projections (2025)

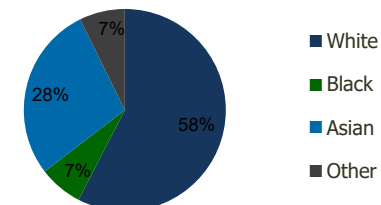
Projected Population	11,745	95,383	255,610	930,098
Projected 5 Year Pop Growth	1.3%	0.8%	0.6%	1.0%
Projected Households	4,957	36,985	90,279	330,976
Projected 5 Year Household Growth	1.2%	0.9%	0.7%	1.0%



Education (3-Mile)



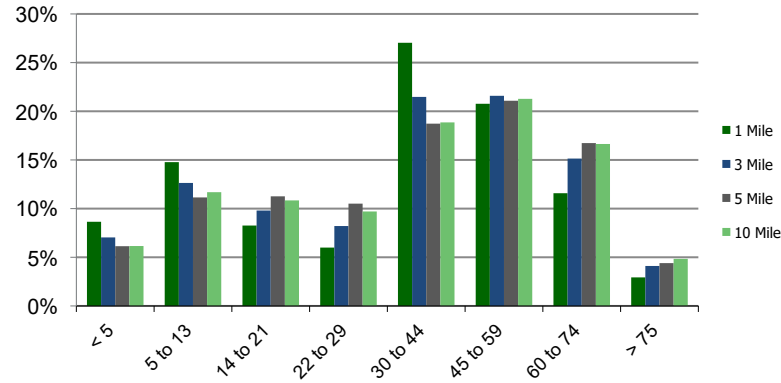
Daytime Population (3-Mile)



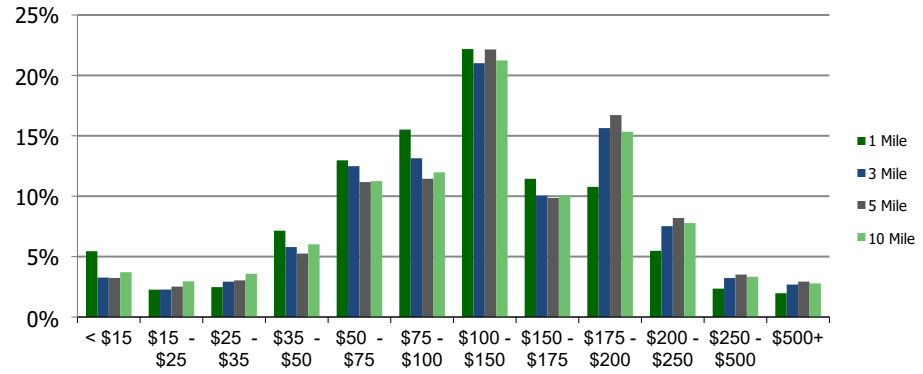
Ethnicity (3-Mile)

This report was produced using data from private and government sources deemed to be reliable and is herein provided without representation or warranty.

**Population by Age Range**



**Household Income by Income Range (\$000)**



**105470-Costco Plaza**  
Fairfax, VA

1.00 Mile  
Radius

3.00 Mile  
Radius

5.00 Mile  
Radius

10.00 Mile  
Radius

	1.00 Mile Radius	3.00 Mile Radius	5.00 Mile Radius	10.00 Mile Radius
<b>Population</b>	Current Estimated Population	11,037	91,565	247,637
	2010 Census Population	10,467	87,048	238,483
	2000 Census Population	5,629	62,562	200,614
	Historical Annual Growth 2000 to 2010	6.40%	3.36%	1.74%
	Estimated Annual Growth 2010 to 2020	0.49%	0.47%	0.35%
	Projected Annual Growth 2020 to 2025	1.25%	0.82%	0.64%
<b>Households</b>	Current Estimated Households	4,662	35,443	87,296
	2010 Census Households	4,414	33,622	83,801
	2000 Census Households	2,456	24,285	70,994
	Historical Annual Growth 2000 to 2010	6.0%	3.3%	1.7%
	Estimated Annual Growth 2010 to 2020	0.5%	0.5%	0.4%
	Projected Annual Growth 2020 to 2025	1.2%	0.9%	0.7%
	Population per Household	2.4	2.6	2.8
<b>Ethnicity</b>	White	55.1%	57.6%	61.9%
	Black or African American	6.6%	7.0%	6.8%
	Asian & Pacific Islander	30.6%	28.1%	23.5%
	Other Races	7.7%	7.3%	7.8%
	Hispanic or Latino Population	8.5%	8.8%	11.2%
	Non Hispanic or Latino Population	91.5%	91.2%	88.8%

This report was produced using data from private and government sources deemed to be reliable and is herein provided without representation or warranty.