

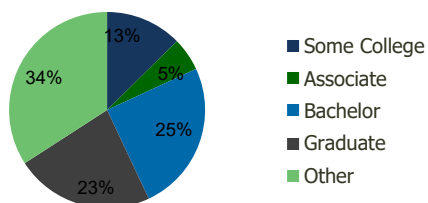
0025-North Shore Triangle Glen Cove, NY	1.00 Mile Radius	3.00 Mile Radius	5.00 Mile Radius	10.00 Mile Radius
--	---------------------	---------------------	---------------------	----------------------

Demographics (2018)

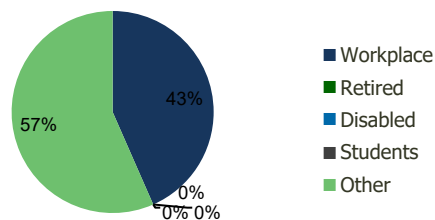
Current Population	17,230	46,590	100,343	708,584
Total Daytime Pop	17,874	45,648	121,704	967,448
Workplace Pop	8,930	19,819	54,916	477,879
Average Household Income	\$108,669	\$142,210	\$173,891	\$157,469
Median Household Income	\$74,350	\$93,460	\$110,056	\$104,988
Total Housing Units	6,213	16,936	35,612	250,531
Median Home Value	\$660,650	\$769,410	\$897,189	\$765,147
Bachelors Degree	19.8%	24.9%	28.8%	26.5%
Graduate Degree	15.4%	22.9%	27.0%	24.5%

Projections (2023)

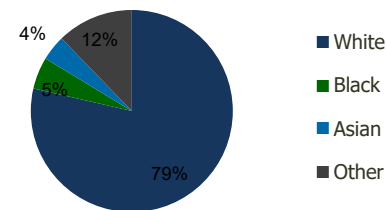
Projected Population	16,968	45,974	99,642	707,726
Projected 5 Year Pop Growth	-0.3%	-0.3%	-0.1%	0.0%
Projected Households	6,113	16,710	35,366	250,354
Projected 5 Year Household Growth	-0.3%	-0.3%	-0.1%	0.0%



Education (3-Mile)



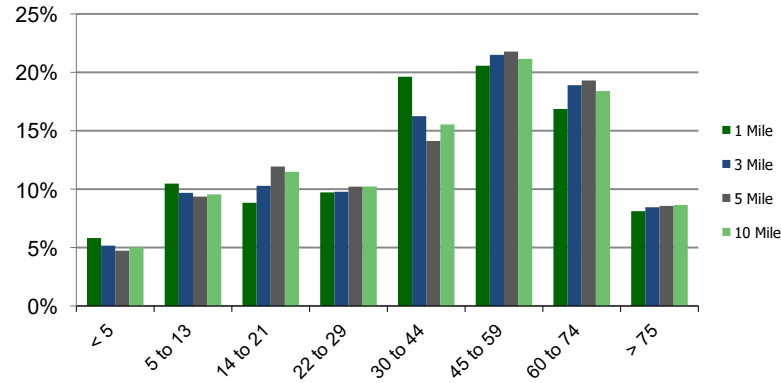
Daytime Population (3-Mile)



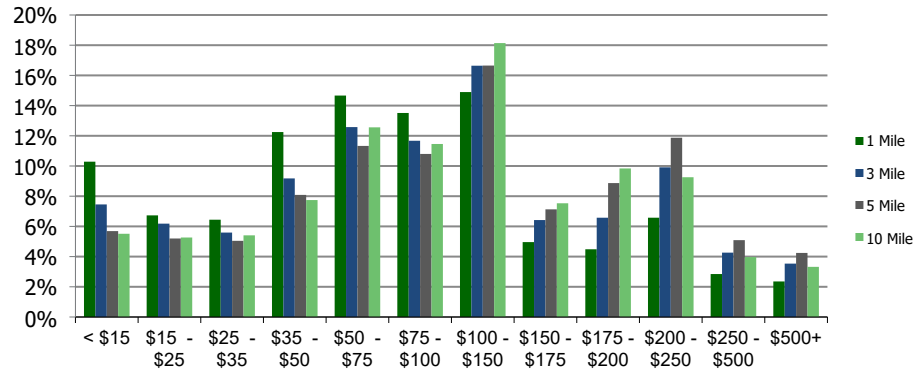
Ethnicity (3-Mile)

This report was produced using data from private and government sources deemed to be reliable and is herein provided without representation or warranty.

Population by Age Range



Household Income by Income Range (\$000)



0025-North Shore Triangle

Glen Cove, NY

1.00 Mile Radius

3.00 Mile Radius

5.00 Mile Radius

10.00 Mile Radius

	1.00 Mile Radius	3.00 Mile Radius	5.00 Mile Radius	10.00 Mile Radius
Population				
Current Estimated Population	17,230	46,590	100,343	708,584
2010 Census Population	17,497	46,617	99,519	700,337
2000 Census Population	17,021	46,421	97,805	679,831
Historical Annual Growth 2000 to 2010	0.28%	0.04%	0.17%	0.30%
Estimated Annual Growth 2010 to 2012	-0.18%	-0.01%	0.09%	0.13%
Projected Annual Growth 2012 to 2018	-0.31%	-0.27%	-0.14%	-0.02%
Households				
Current Estimated Households	6,213	16,936	35,612	250,531
2010 Census Households	6,306	16,931	35,330	247,248
2000 Census Households	5,957	16,675	34,531	243,920
Historical Annual Growth 2000 to 2010	0.6%	0.2%	0.2%	0.1%
Estimated Annual Growth 2010 to 2012	-0.2%	0.0%	0.1%	0.2%
Projected Annual Growth 2012 to 2018	-0.3%	-0.3%	-0.1%	0.0%
Population per Household	2.7	2.7	2.7	2.8
Ethnicity				
White	68.2%	78.6%	80.9%	71.2%
Black or African American	9.2%	5.1%	3.5%	6.4%
Asian & Pacific Islander	4.2%	4.1%	7.0%	13.5%
Other Races	18.5%	12.3%	8.6%	8.9%
Hispanic or Latino Population	29.4%	19.3%	14.9%	16.0%
Non Hispanic or Latino Population	70.6%	80.7%	85.1%	84.0%

This report was produced using data from private and government sources deemed to be reliable and is herein provided without representation or warranty.