

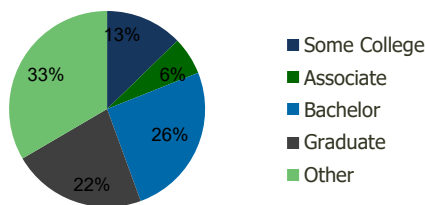
100250-North Shore Triangle Glen Cove, NY	1.00 Mile Radius	3.00 Mile Radius	5.00 Mile Radius	10.00 Mile Radius
--	---------------------	---------------------	---------------------	----------------------

## Demographics (2021)

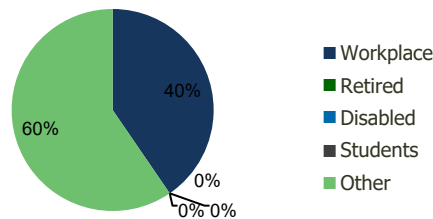
Current Population	17,836	47,542	101,755	725,502
Total Daytime Pop	17,735	44,768	117,836	931,318
Workplace Pop	8,139	18,105	49,903	435,122
Average Household Income	\$109,696	\$152,657	\$193,916	\$176,596
Median Household Income	\$79,244	\$106,084	\$125,207	\$117,501
Total Housing Units	6,439	17,288	36,077	256,729
Median Home Value	\$678,312	\$777,478	\$877,519	\$787,358
Bachelors Degree	22.2%	25.4%	28.8%	27.3%
Graduate Degree	14.8%	22.1%	28.4%	25.5%

## Projections (2026)

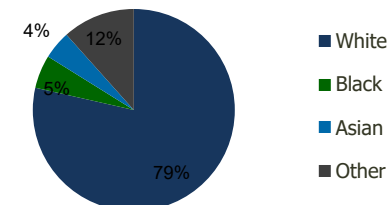
Projected Population	17,735	47,190	101,166	723,791
Projected 5 Year Pop Growth	-0.1%	-0.1%	-0.1%	0.0%
Projected Households	6,402	17,158	35,860	256,217
Projected 5 Year Household Growth	-0.1%	-0.2%	-0.1%	0.0%



Education (3-Mile)



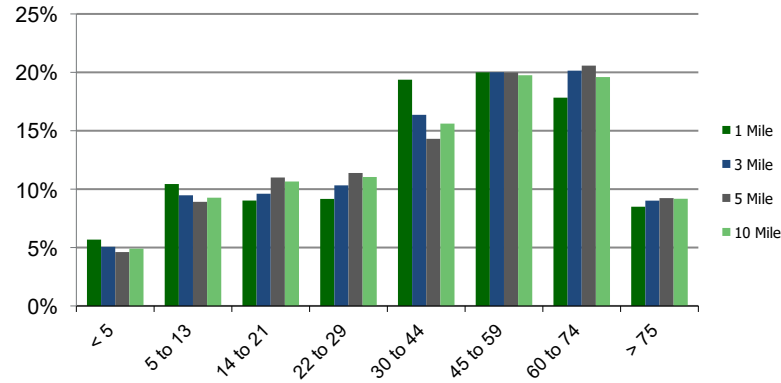
Daytime Population (3-Mile)



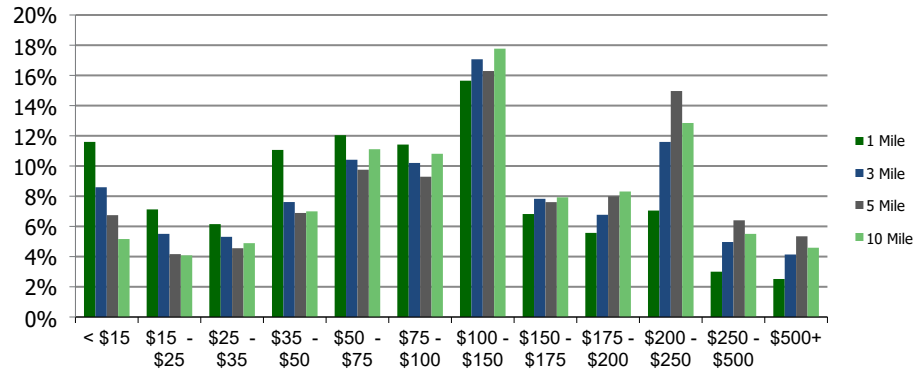
Ethnicity (3-Mile)

This report was produced using data from private and government sources deemed to be reliable and is herein provided without representation or warranty.

**Population by Age Range**



**Household Income by Income Range (\$000)**



**100250-North Shore Triangle**

Glen Cove, NY

1.00 Mile Radius

3.00 Mile Radius

5.00 Mile Radius

10.00 Mile Radius

	1.00 Mile Radius	3.00 Mile Radius	5.00 Mile Radius	10.00 Mile Radius
<b>Population</b>				
Current Estimated Population	17,836	47,542	101,755	725,502
2010 Census Population	17,497	46,617	98,961	700,554
2000 Census Population	17,021	46,421	97,172	681,455
Historical Annual Growth 2000 to 2010	0.28%	0.04%	0.18%	0.28%
Estimated Annual Growth 2010 to 2020	0.16%	0.17%	0.24%	0.30%
Projected Annual Growth 2020 to 2025	-0.11%	-0.15%	-0.12%	-0.05%
<b>Households</b>				
Current Estimated Households	6,439	17,288	36,077	256,729
2010 Census Households	6,306	16,931	35,057	247,200
2000 Census Households	5,957	16,675	34,251	244,634
Historical Annual Growth 2000 to 2010	0.6%	0.2%	0.2%	0.1%
Estimated Annual Growth 2010 to 2020	0.2%	0.2%	0.2%	0.3%
Projected Annual Growth 2020 to 2025	-0.1%	-0.2%	-0.1%	0.0%
Population per Household	2.7	2.7	2.7	2.8
<b>Ethnicity</b>				
White	68.2%	78.5%	80.2%	69.9%
Black or African American	10.0%	5.3%	3.6%	6.2%
Asian & Pacific Islander	4.7%	4.5%	7.5%	14.4%
Other Races	17.1%	11.6%	8.7%	9.6%
Hispanic or Latino Population	29.0%	19.3%	14.8%	16.5%
Non Hispanic or Latino Population	71.0%	80.7%	85.2%	83.5%

This report was produced using data from private and government sources deemed to be reliable and is herein provided without representation or warranty.