

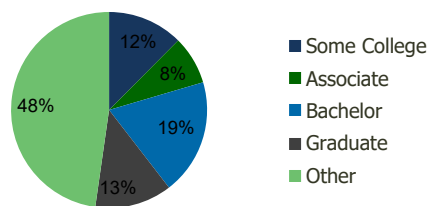
115900-Kissena Blvd S.C. Flushing, NY	1.00 Mile Radius	3.00 Mile Radius	5.00 Mile Radius	10.00 Mile Radius
--	---------------------	---------------------	---------------------	----------------------

Demographics (2020)

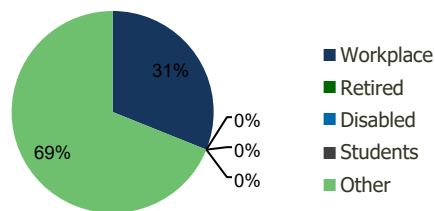
Current Population	113,367	686,283	1,582,190	6,816,377
Total Daytime Pop	124,674	649,283	1,413,901	8,360,636
Workplace Pop	39,134	201,793	435,326	3,909,307
Average Household Income	\$69,539	\$87,950	\$90,160	\$112,109
Median Household Income	\$48,132	\$65,830	\$68,570	\$70,416
Total Housing Units	38,492	241,626	539,461	2,614,666
Median Home Value	\$624,078	\$618,146	\$588,499	\$613,868
Bachelors Degree	12.7%	19.1%	19.0%	22.0%
Graduate Degree	7.9%	12.7%	11.3%	15.8%

Projections (2025)

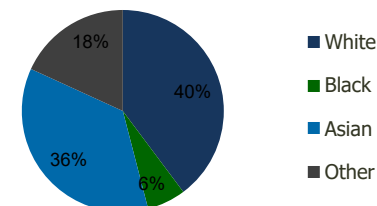
Projected Population	115,662	695,769	1,598,085	6,932,160
Projected 5 Year Pop Growth	0.4%	0.3%	0.2%	0.3%
Projected Households	39,284	244,966	544,912	2,661,973
Projected 5 Year Household Growth	0.4%	0.3%	0.2%	0.4%



Education (3-Mile)



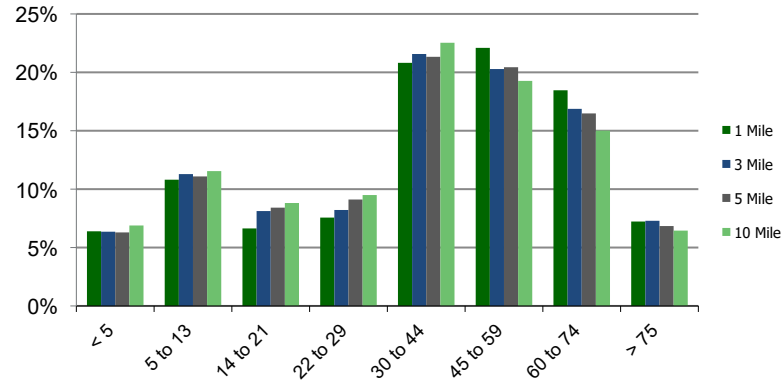
Daytime Population (3-Mile)



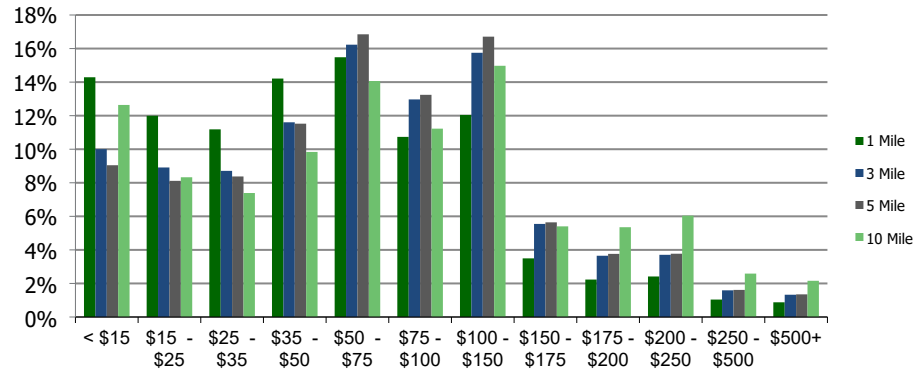
Ethnicity (3-Mile)

This report was produced using data from private and government sources deemed to be reliable and is herein provided without representation or warranty.

Population by Age Range



Household Income by Income Range (\$000)



115900-Kissena Blvd S.C. Flushing, NY	1.00 Mile Radius	3.00 Mile Radius	5.00 Mile Radius	10.00 Mile Radius
--	-----------------------------	-----------------------------	-----------------------------	------------------------------

Population	Current Estimated Population	113,367	686,283	1,582,190	6,816,377
	2010 Census Population	113,003	688,469	1,587,996	6,609,618
	2000 Census Population	110,048	671,868	1,559,780	6,484,042
	Historical Annual Growth 2000 to 2010	0.27%	0.24%	0.18%	0.19%
	Estimated Annual Growth 2010 to 2020	0.03%	-0.03%	-0.03%	0.29%
	Projected Annual Growth 2020 to 2025	0.40%	0.27%	0.20%	0.34%
Households	Current Estimated Households	38,492	241,626	539,461	2,614,666
	2010 Census Households	38,375	242,989	542,380	2,526,407
	2000 Census Households	38,119	243,451	545,500	2,462,831
	Historical Annual Growth 2000 to 2010	0.1%	0.0%	-0.1%	0.3%
	Estimated Annual Growth 2010 to 2020	0.0%	-0.1%	-0.1%	0.3%
	Projected Annual Growth 2020 to 2025	0.4%	0.3%	0.2%	0.4%
	Population per Household	2.9	2.8	2.9	2.5
Ethnicity	White	16.9%	39.8%	38.0%	39.9%
	Black or African American	3.3%	6.2%	12.6%	26.8%
	Asian & Pacific Islander	69.5%	35.9%	29.4%	13.2%
	Other Races	10.4%	18.2%	20.0%	20.0%
	Hispanic or Latino Population	15.9%	29.5%	30.2%	31.3%
	Non Hispanic or Latino Population	84.1%	70.5%	69.8%	68.7%

This report was produced using data from private and government sources deemed to be reliable and is herein provided without representation or warranty.