

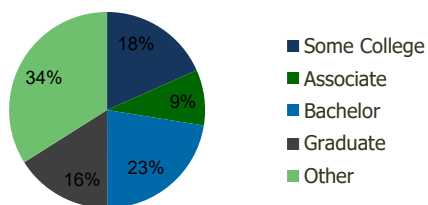
1136-Franklin Square S.C. Franklin Square, NY	1.00 Mile Radius	3.00 Mile Radius	5.00 Mile Radius	10.00 Mile Radius
--	---------------------	---------------------	---------------------	----------------------

Demographics (2018)

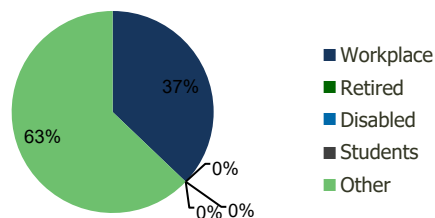
Current Population	29,865	263,897	794,493	2,554,320
Total Daytime Pop	19,701	228,899	748,739	2,426,836
Workplace Pop	4,539	84,981	309,843	910,889
Average Household Income	\$113,728	\$121,302	\$112,633	\$103,471
Median Household Income	\$96,698	\$101,009	\$89,356	\$77,252
Total Housing Units	9,800	86,678	259,077	864,864
Median Home Value	\$575,806	\$561,501	\$567,905	\$586,291
Bachelors Degree	21.4%	22.4%	20.7%	20.4%
Graduate Degree	14.0%	16.1%	15.0%	14.5%

Projections (2023)

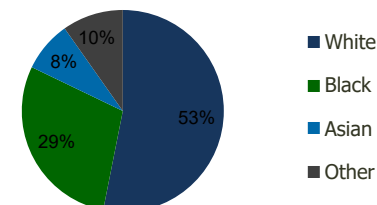
Projected Population	29,688	263,287	796,636	2,565,450
Projected 5 Year Pop Growth	-0.1%	0.0%	0.1%	0.1%
Projected Households	9,738	86,504	259,914	869,006
Projected 5 Year Household Growth	-0.1%	0.0%	0.1%	0.1%



Education (3-Mile)



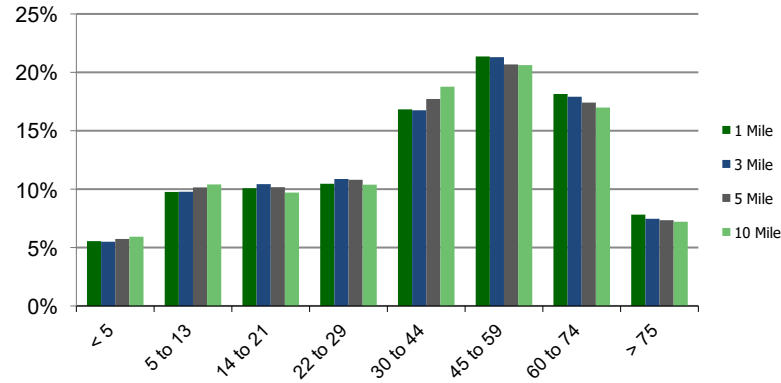
Daytime Population (3-Mile)



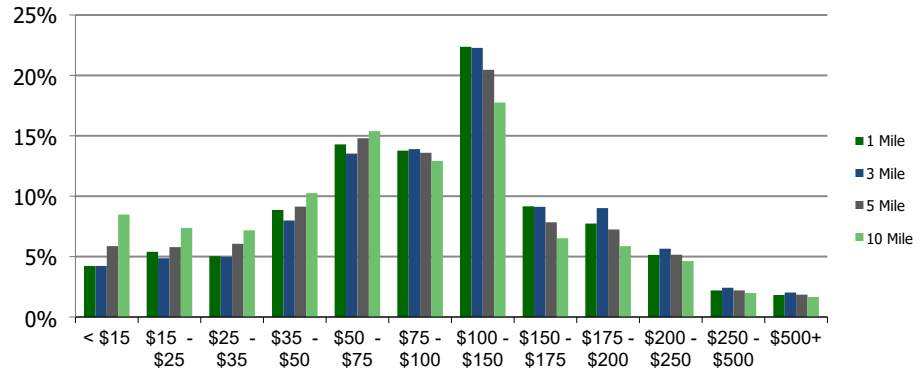
Ethnicity (3-Mile)

This report was produced using data from private and government sources deemed to be reliable and is herein provided without representation or warranty.

Population by Age Range



Household Income by Income Range (\$000)



1136-Franklin Square S.C. Franklin Square, NY	1.00 Mile Radius	3.00 Mile Radius	5.00 Mile Radius	10.00 Mile Radius
---	-------------------------	-------------------------	-------------------------	--------------------------

Population	Current Estimated Population	29,865	263,897	794,493	2,554,320
	2010 Census Population	29,363	259,497	779,734	2,501,010
	2000 Census Population	28,441	260,702	787,537	2,481,823
	Historical Annual Growth 2000 to 2010	0.32%	-0.05%	-0.10%	0.08%
	Estimated Annual Growth 2010 to 2012	0.19%	0.19%	0.21%	0.24%
	Projected Annual Growth 2012 to 2018	-0.12%	-0.05%	0.05%	0.09%
Households	Current Estimated Households	9,800	86,678	259,077	864,864
	2010 Census Households	9,645	85,122	254,371	846,777
	2000 Census Households	9,609	86,625	258,402	847,311
	Historical Annual Growth 2000 to 2010	0.0%	-0.2%	-0.2%	0.0%
	Estimated Annual Growth 2010 to 2012	0.2%	0.2%	0.2%	0.2%
	Projected Annual Growth 2012 to 2018	-0.1%	0.0%	0.1%	0.1%
	Population per Household	3.0	3.0	3.0	2.9
Ethnicity	White	59.5%	53.1%	42.0%	46.2%
	Black or African American	18.3%	29.0%	36.6%	21.9%
	Asian & Pacific Islander	10.7%	8.1%	10.2%	18.2%
	Other Races	11.5%	9.8%	11.2%	13.7%
	Hispanic or Latino Population	16.4%	15.3%	15.6%	19.8%
	Non Hispanic or Latino Population	83.6%	84.7%	84.4%	80.2%

This report was produced using data from private and government sources deemed to be reliable and is herein provided without representation or warranty.