

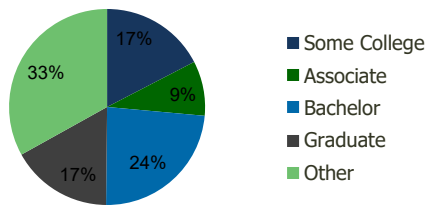
111360-Franklin Square S.C. Franklin Square, NY	1.00 Mile Radius	3.00 Mile Radius	5.00 Mile Radius	10.00 Mile Radius
--	------------------	------------------	------------------	-------------------

Demographics (2021)

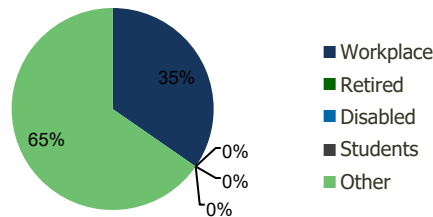
Current Population	30,402	268,068	807,966	2,607,128
Total Daytime Pop	19,126	224,861	746,056	2,431,152
Workplace Pop	4,202	77,889	288,839	853,529
Average Household Income	\$135,946	\$135,254	\$126,853	\$116,858
Median Household Income	\$114,076	\$112,933	\$101,088	\$86,902
Total Housing Units	9,976	88,117	263,449	883,625
Median Home Value	\$641,114	\$631,693	\$629,861	\$639,477
Bachelors Degree	22.7%	23.7%	21.7%	21.1%
Graduate Degree	14.4%	16.8%	15.7%	15.0%

Projections (2026)

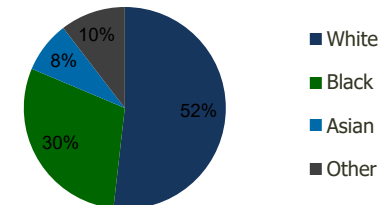
Projected Population	30,250	266,816	807,598	2,606,565
Projected 5 Year Pop Growth	-0.1%	-0.1%	0.0%	0.0%
Projected Households	9,926	87,740	263,487	883,787
Projected 5 Year Household Growth	-0.1%	-0.1%	0.0%	0.0%



Education (3-Mile)



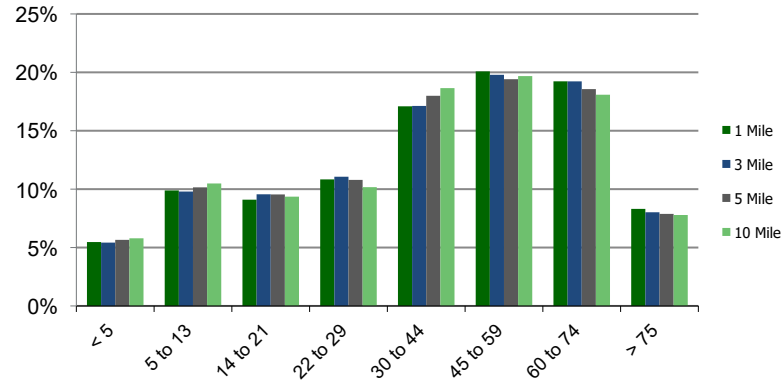
Daytime Population (3-Mile)



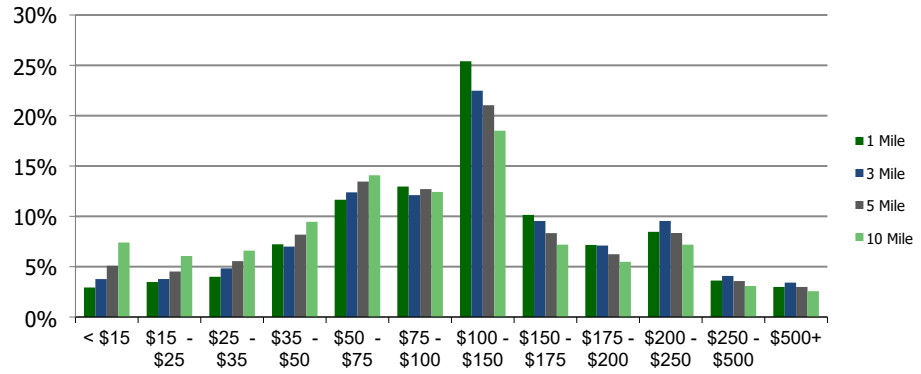
Ethnicity (3-Mile)

This report was produced using data from private and government sources deemed to be reliable and is herein provided without representation or warranty.

Population by Age Range



Household Income by Income Range (\$000)



111360-Franklin Square S.C.
Franklin Square, NY

1.00 Mile
Radius

3.00 Mile
Radius

5.00 Mile
Radius

10.00 Mile
Radius

	1.00 Mile Radius	3.00 Mile Radius	5.00 Mile Radius	10.00 Mile Radius
Population				
Current Estimated Population	30,402	268,068	807,966	2,607,128
2010 Census Population	29,380	259,517	778,632	2,506,236
2000 Census Population	28,455	260,716	786,095	2,486,457
Historical Annual Growth 2000 to 2010	0.32%	-0.05%	-0.10%	0.08%
Estimated Annual Growth 2010 to 2020	0.29%	0.28%	0.32%	0.34%
Projected Annual Growth 2020 to 2025	-0.10%	-0.09%	-0.01%	0.00%
Households				
Current Estimated Households	9,976	88,117	263,449	883,625
2010 Census Households	9,649	85,127	253,666	848,531
2000 Census Households	9,614	86,630	257,549	848,912
Historical Annual Growth 2000 to 2010	0.0%	-0.2%	-0.2%	0.0%
Estimated Annual Growth 2010 to 2020	0.3%	0.3%	0.3%	0.3%
Projected Annual Growth 2020 to 2025	-0.1%	-0.1%	0.0%	0.0%
Population per Household	3.0	3.0	3.0	2.9
Ethnicity				
White	56.9%	51.8%	41.2%	45.2%
Black or African American	20.3%	29.5%	36.8%	21.9%
Asian & Pacific Islander	11.2%	8.2%	10.4%	18.9%
Other Races	11.5%	10.4%	11.6%	14.0%
Hispanic or Latino Population	17.6%	16.1%	16.2%	20.3%
Non Hispanic or Latino Population	82.4%	83.9%	83.8%	79.7%

This report was produced using data from private and government sources deemed to be reliable and is herein provided without representation or warranty.