

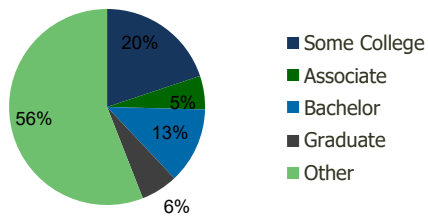
101330-Linwood Square Indianapolis, IN	1.00 Mile Radius	3.00 Mile Radius	5.00 Mile Radius	10.00 Mile Radius
---	---------------------	---------------------	---------------------	----------------------

### Demographics (2019)

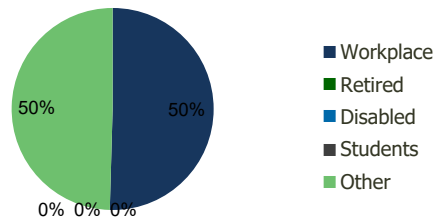
Current Population	19,559	103,827	251,974	786,619
Total Daytime Pop	12,641	111,714	440,929	1,023,380
Workplace Pop	4,210	56,358	230,326	508,692
Average Household Income	\$42,831	\$48,856	\$53,985	\$64,184
Median Household Income	\$32,595	\$33,639	\$37,441	\$45,439
Total Housing Units	8,050	42,344	105,393	318,948
Median Home Value	\$107,811	\$107,996	\$121,169	\$160,560
Bachelors Degree	13.6%	12.6%	14.6%	18.1%
Graduate Degree	4.3%	6.1%	7.7%	9.8%

### Projections (2024)

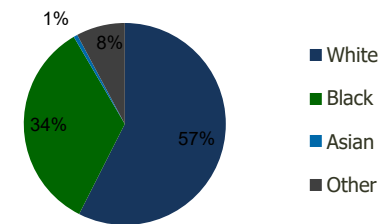
Projected Population	19,862	106,414	259,641	809,065
Projected 5 Year Pop Growth	0.3%	0.5%	0.6%	0.6%
Projected Households	8,163	43,676	109,640	329,003
Projected 5 Year Household Growth	0.3%	0.6%	0.8%	0.6%



Education (3-Mile)



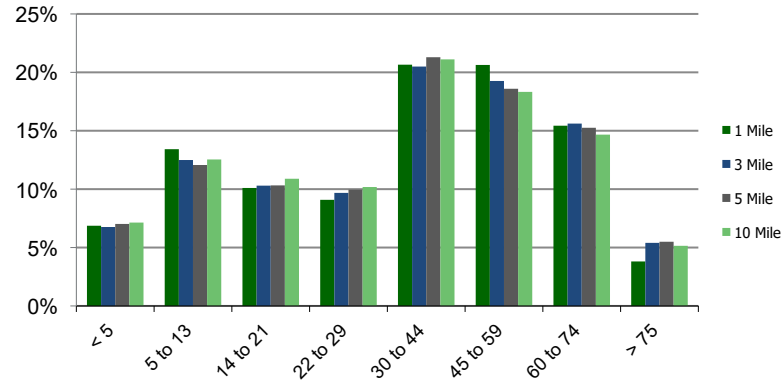
Daytime Population (3-Mile)



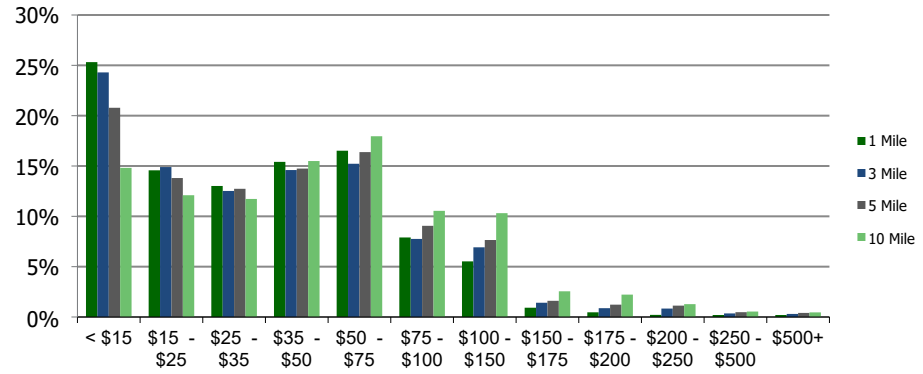
Ethnicity (3-Mile)

This report was produced using data from private and government sources deemed to be reliable and is herein provided without representation or warranty.

**Population by Age Range**



**Household Income by Income Range (\$000)**



<b>101330-Linwood Square</b> Indianapolis, IN	<b>1.00 Mile Radius</b>	<b>3.00 Mile Radius</b>	<b>5.00 Mile Radius</b>	<b>10.00 Mile Radius</b>
--	-------------------------	-------------------------	-------------------------	--------------------------

<b>Population</b>	Current Estimated Population	19,559	103,827	251,974	786,619
	2010 Census Population	18,671	98,467	239,062	744,439
	2000 Census Population	21,826	114,746	262,890	718,705
	Historical Annual Growth 2000 to 2010	-1.55%	-1.52%	-0.95%	0.35%
	Estimated Annual Growth 2010 to 2019	0.48%	0.55%	0.54%	0.57%
	Projected Annual Growth 2019 to 2024	0.31%	0.49%	0.60%	0.56%
<b>Households</b>	Current Estimated Households	8,050	42,344	105,393	318,948
	2010 Census Households	7,717	39,793	98,680	300,623
	2000 Census Households	9,166	45,776	106,642	293,879
	Historical Annual Growth 2000 to 2010	-1.7%	-1.4%	-0.8%	0.2%
	Estimated Annual Growth 2010 to 2019	0.4%	0.6%	0.7%	0.6%
	Projected Annual Growth 2019 to 2024	0.3%	0.6%	0.8%	0.6%
	Population per Household	2.4	2.4	2.3	2.4
<b>Ethnicity</b>	White	65.3%	57.5%	55.8%	61.9%
	Black or African American	24.7%	34.1%	36.2%	27.7%
	Asian & Pacific Islander	0.3%	0.6%	1.2%	2.4%
	Other Races	9.6%	7.8%	6.8%	8.0%
	Hispanic or Latino Population	11.1%	9.3%	7.8%	9.7%
	Non Hispanic or Latino Population	88.9%	90.7%	92.2%	90.3%

This report was produced using data from private and government sources deemed to be reliable and is herein provided without representation or warranty.