

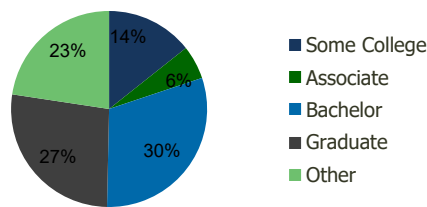
108540-Skokie Pointe Skokie, IL	1.00 Mile Radius	3.00 Mile Radius	5.00 Mile Radius	10.00 Mile Radius
------------------------------------	---------------------	---------------------	---------------------	----------------------

Demographics (2021)

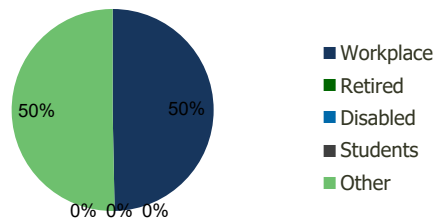
Current Population	20,810	147,298	433,624	1,686,163
Total Daytime Pop	30,749	174,249	512,907	1,832,808
Workplace Pop	18,218	86,575	241,431	834,881
Average Household Income	\$100,391	\$143,467	\$134,903	\$116,867
Median Household Income	\$71,596	\$95,035	\$84,873	\$78,700
Total Housing Units	7,791	54,067	163,402	669,761
Median Home Value	\$409,406	\$478,446	\$471,539	\$430,842
Bachelors Degree	29.6%	30.5%	29.6%	28.4%
Graduate Degree	16.7%	27.1%	25.4%	20.3%

Projections (2026)

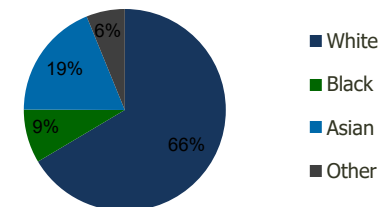
Projected Population	20,440	145,402	427,852	1,673,492
Projected 5 Year Pop Growth	-0.4%	-0.3%	-0.3%	-0.2%
Projected Households	7,655	53,401	161,321	665,120
Projected 5 Year Household Growth	-0.4%	-0.2%	-0.3%	-0.1%



Education (3-Mile)



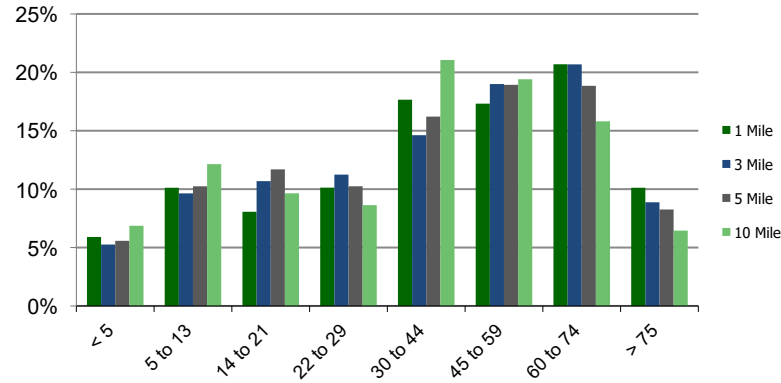
Daytime Population (3-Mile)



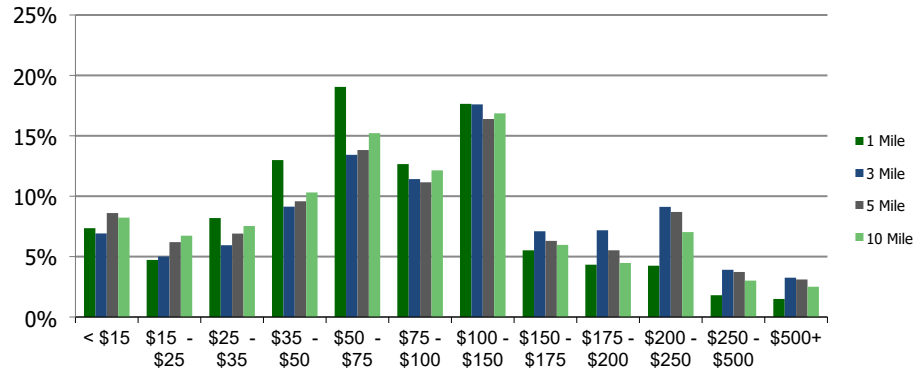
Ethnicity (3-Mile)

This report was produced using data from private and government sources deemed to be reliable and is herein provided without representation or warranty.

Population by Age Range



Household Income by Income Range (\$000)



108540-Skokie Pointe
Skokie, IL

1.00 Mile
Radius

3.00 Mile
Radius

5.00 Mile
Radius

10.00 Mile
Radius

	1.00 Mile Radius	3.00 Mile Radius	5.00 Mile Radius	10.00 Mile Radius
Population	Current Estimated Population	20,810	147,298	433,624
	2010 Census Population	21,097	145,082	426,392
	2000 Census Population	20,613	142,764	426,266
	Historical Annual Growth 2000 to 2010	0.23%	0.16%	0.00%
	Estimated Annual Growth 2010 to 2020	-0.12%	0.13%	0.14%
	Projected Annual Growth 2020 to 2025	-0.36%	-0.26%	-0.27%
Households	Current Estimated Households	7,791	54,067	163,402
	2010 Census Households	7,869	53,182	160,143
	2000 Census Households	7,659	52,804	160,057
	Historical Annual Growth 2000 to 2010	0.3%	0.1%	0.0%
	Estimated Annual Growth 2010 to 2020	-0.1%	0.1%	0.2%
	Projected Annual Growth 2020 to 2025	-0.4%	-0.2%	-0.3%
	Population per Household	2.6	2.7	2.6
Ethnicity	White	57.6%	66.5%	68.5%
	Black or African American	8.1%	8.6%	8.9%
	Asian & Pacific Islander	28.3%	18.8%	15.4%
	Other Races	6.0%	6.2%	7.3%
	Hispanic or Latino Population	9.0%	8.5%	11.1%
	Non Hispanic or Latino Population	91.0%	91.5%	88.9%

This report was produced using data from private and government sources deemed to be reliable and is herein provided without representation or warranty.