

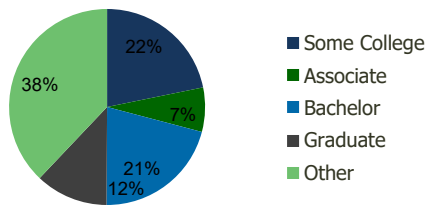
116890-City Heights Center San Diego, CA	1.00 Mile Radius	3.00 Mile Radius	5.00 Mile Radius	10.00 Mile Radius
---	---------------------	---------------------	---------------------	----------------------

Demographics (2019)

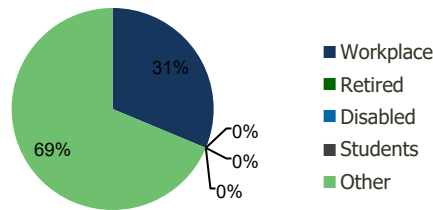
Current Population	64,360	265,272	658,352	1,424,135
Total Daytime Pop	44,770	250,588	726,107	1,717,037
Workplace Pop	9,073	78,416	308,200	743,603
Average Household Income	\$55,545	\$78,253	\$85,583	\$90,800
Median Household Income	\$39,125	\$58,011	\$62,753	\$68,369
Total Housing Units	20,030	103,742	250,830	526,761
Median Home Value	\$611,956	\$681,035	\$692,283	\$727,527
Bachelors Degree	11.0%	21.0%	20.9%	21.6%
Graduate Degree	5.4%	12.0%	12.0%	12.3%

Projections (2024)

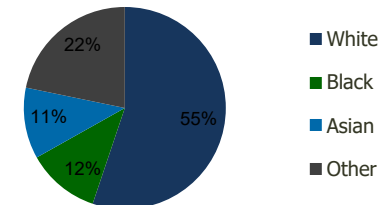
Projected Population	64,683	268,234	674,147	1,449,095
Projected 5 Year Pop Growth	0.1%	0.2%	0.5%	0.3%
Projected Households	20,145	105,134	258,643	538,099
Projected 5 Year Household Growth	0.1%	0.3%	0.6%	0.4%



Education (3-Mile)



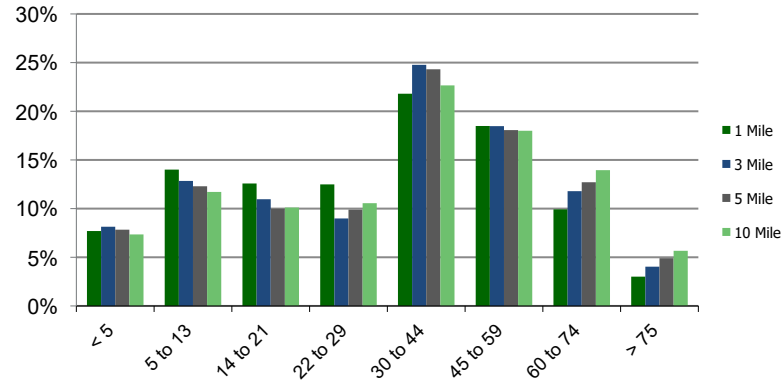
Daytime Population (3-Mile)



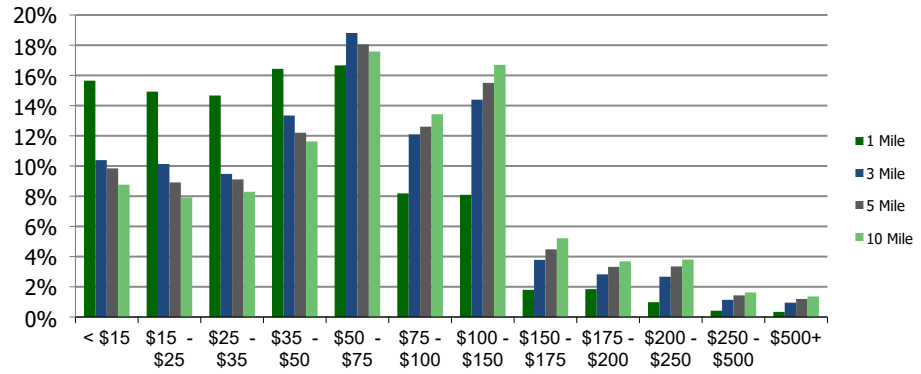
Ethnicity (3-Mile)

This report was produced using data from private and government sources deemed to be reliable and is herein provided without representation or warranty.

Population by Age Range



Household Income by Income Range (\$000)



116890-City Heights Center
San Diego, CA

1.00 Mile
Radius

3.00 Mile
Radius

5.00 Mile
Radius

10.00 Mile
Radius

	1.00 Mile Radius	3.00 Mile Radius	5.00 Mile Radius	10.00 Mile Radius
Population	Current Estimated Population	64,360	265,272	658,352
	2010 Census Population	62,299	254,503	618,050
	2000 Census Population	66,612	258,289	593,761
	Historical Annual Growth 2000 to 2010	-0.67%	-0.15%	0.40%
	Estimated Annual Growth 2010 to 2019	0.33%	0.43%	0.65%
	Projected Annual Growth 2019 to 2024	0.10%	0.22%	0.48%
Households	Current Estimated Households	20,030	103,742	250,830
	2010 Census Households	19,349	99,009	231,977
	2000 Census Households	19,823	99,212	219,844
	Historical Annual Growth 2000 to 2010	-0.2%	0.0%	0.5%
	Estimated Annual Growth 2010 to 2019	0.4%	0.5%	0.8%
	Projected Annual Growth 2019 to 2024	0.1%	0.3%	0.6%
	Population per Household	3.2	2.5	2.5
Ethnicity	White	40.9%	55.2%	56.5%
	Black or African American	12.2%	11.7%	10.8%
	Asian & Pacific Islander	16.8%	11.4%	11.4%
	Other Races	30.2%	21.8%	21.4%
	Hispanic or Latino Population	56.8%	39.7%	38.3%
	Non Hispanic or Latino Population	43.2%	60.3%	61.7%

This report was produced using data from private and government sources deemed to be reliable and is herein provided without representation or warranty.