

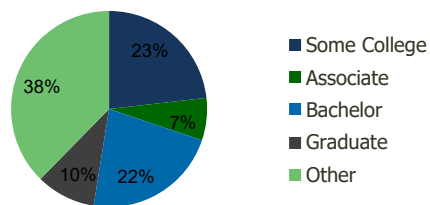
113550-Copperwood Village Houston, TX	1.00 Mile Radius	3.00 Mile Radius	5.00 Mile Radius	10.00 Mile Radius
--	---------------------	---------------------	---------------------	----------------------

Demographics (2019)

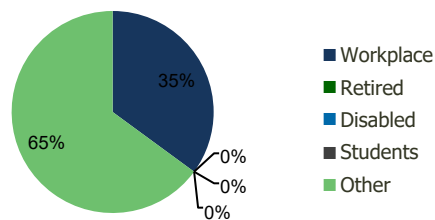
Current Population	18,176	161,081	324,570	1,016,996
Total Daytime Pop	18,453	134,267	293,050	1,041,296
Workplace Pop	8,045	47,083	112,741	494,776
Average Household Income	\$83,912	\$89,473	\$93,934	\$101,127
Median Household Income	\$66,698	\$72,228	\$74,483	\$75,223
Total Housing Units	6,159	52,262	105,545	351,260
Median Home Value	\$198,764	\$198,218	\$208,268	\$229,964
Bachelors Degree	22.5%	22.3%	23.2%	25.0%
Graduate Degree	8.1%	9.8%	10.3%	12.3%

Projections (2024)

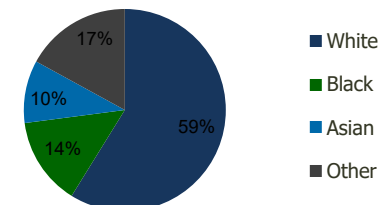
Projected Population	18,692	169,359	353,188	1,105,443
Projected 5 Year Pop Growth	0.6%	1.0%	1.7%	1.7%
Projected Households	6,330	54,714	114,060	380,116
Projected 5 Year Household Growth	0.5%	0.9%	1.6%	1.6%



Education (3-Mile)



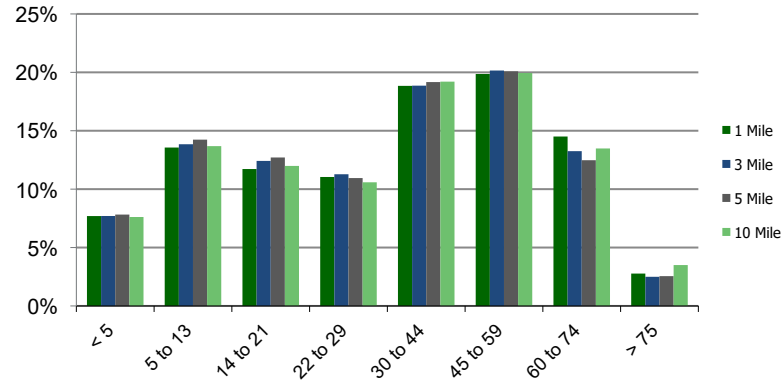
Daytime Population (3-Mile)



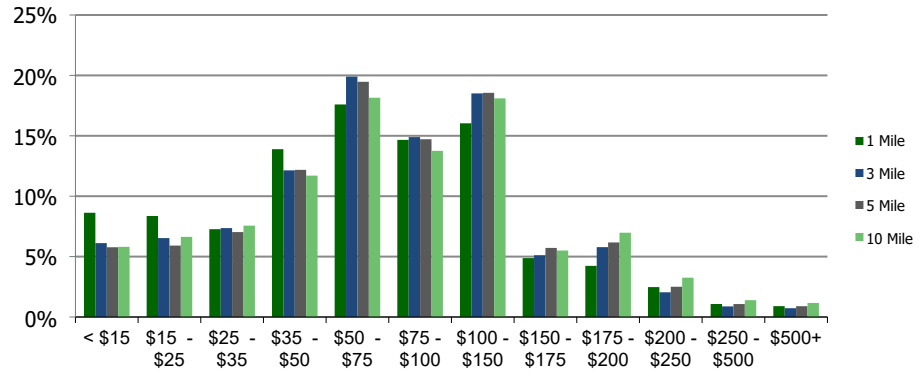
Ethnicity (3-Mile)

This report was produced using data from private and government sources deemed to be reliable and is herein provided without representation or warranty.

Population by Age Range



Household Income by Income Range (\$000)



113550-Copperwood Village
Houston, TX

1.00 Mile
Radius

3.00 Mile
Radius

5.00 Mile
Radius

10.00 Mile
Radius

	1.00 Mile Radius	3.00 Mile Radius	5.00 Mile Radius	10.00 Mile Radius
Population	Current Estimated Population	18,176	161,081	324,570
	2010 Census Population	16,729	142,902	272,039
	2000 Census Population	12,332	95,349	155,107
	Historical Annual Growth 2000 to 2010	3.10%	4.13%	5.78%
	Estimated Annual Growth 2010 to 2019	0.85%	1.24%	1.83%
	Projected Annual Growth 2019 to 2024	0.56%	1.01%	1.70%
Households	Current Estimated Households	6,159	52,262	105,545
	2010 Census Households	5,683	46,722	89,489
	2000 Census Households	4,205	31,649	52,865
	Historical Annual Growth 2000 to 2010	3.1%	4.0%	5.4%
	Estimated Annual Growth 2010 to 2019	0.8%	1.2%	1.7%
	Projected Annual Growth 2019 to 2024	0.5%	0.9%	1.6%
	Population per Household	2.9	3.1	3.1
Ethnicity	White	57.8%	58.8%	58.6%
	Black or African American	13.9%	14.1%	16.4%
	Asian & Pacific Islander	10.4%	10.0%	9.8%
	Other Races	17.9%	17.0%	15.3%
	Hispanic or Latino Population	40.7%	39.9%	37.4%
	Non Hispanic or Latino Population	59.3%	60.1%	62.6%

This report was produced using data from private and government sources deemed to be reliable and is herein provided without representation or warranty.