

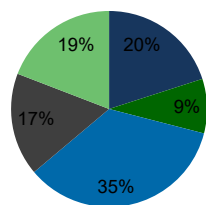
110862-Cypress Towne Center Houston, TX	1.00 Mile Radius	3.00 Mile Radius	5.00 Mile Radius	10.00 Mile Radius
--	---------------------	---------------------	---------------------	----------------------

## Demographics (2021)

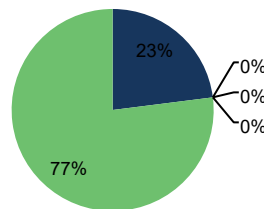
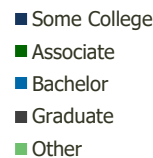
Current Population	9,575	82,641	187,898	713,387
Total Daytime Pop	11,005	57,709	147,391	614,015
Workplace Pop	2,992	13,273	32,799	229,357
Average Household Income	\$132,146	\$134,386	\$136,369	\$109,633
Median Household Income	\$112,483	\$114,785	\$114,364	\$86,513
Total Housing Units	3,085	26,567	60,583	238,149
Median Home Value	\$371,837	\$343,407	\$333,241	\$253,924
Bachelors Degree	34.0%	34.9%	34.2%	26.9%
Graduate Degree	18.5%	17.0%	16.1%	11.8%

## Projections (2026)

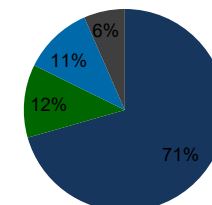
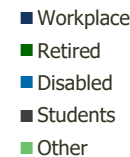
Projected Population	11,297	99,608	222,905	792,858
Projected 5 Year Pop Growth	3.4%	3.8%	3.5%	2.1%
Projected Households	3,657	32,015	71,702	263,068
Projected 5 Year Household Growth	3.5%	3.8%	3.4%	2.0%



Education (3-Mile)



Daytime Population (3-Mile)

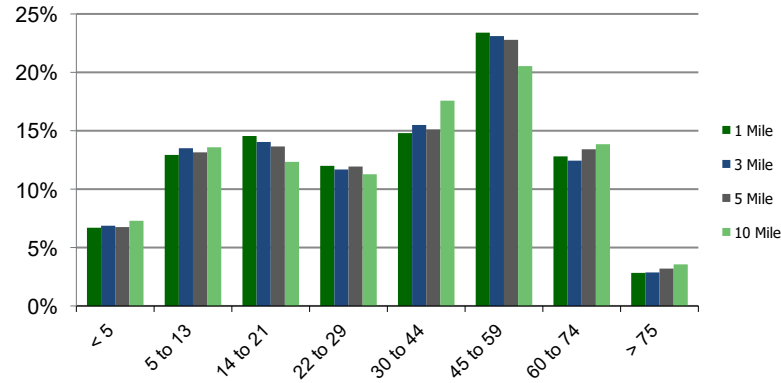


Ethnicity (3-Mile)

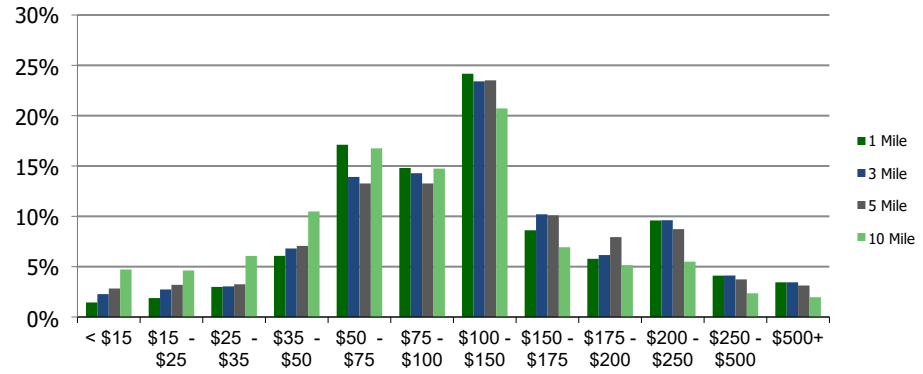


This report was produced using data from private and government sources deemed to be reliable and is herein provided without representation or warranty.

**Population by Age Range**



**Household Income by Income Range (\$000)**



**110862-Cypress Towne Center**  
Houston, TX

1.00 Mile  
Radius

3.00 Mile  
Radius

5.00 Mile  
Radius

10.00 Mile  
Radius

	1.00 Mile Radius	3.00 Mile Radius	5.00 Mile Radius	10.00 Mile Radius
<b>Population</b>	Current Estimated Population	9,575	82,641	187,898
	2010 Census Population	6,600	50,352	122,291
	2000 Census Population	1,362	13,202	46,556
	Historical Annual Growth 2000 to 2010	17.10%	14.32%	10.14%
	Estimated Annual Growth 2010 to 2020	3.22%	4.31%	3.72%
	Projected Annual Growth 2020 to 2025	3.36%	3.81%	3.48%
<b>Households</b>	Current Estimated Households	3,085	26,567	60,583
	2010 Census Households	2,105	16,194	39,648
	2000 Census Households	433	4,270	15,099
	Historical Annual Growth 2000 to 2010	17.1%	14.3%	10.1%
	Estimated Annual Growth 2010 to 2020	3.3%	4.3%	3.7%
	Projected Annual Growth 2020 to 2025	3.5%	3.8%	3.4%
	Population per Household	3.1	3.1	3.1
<b>Ethnicity</b>	White	70.8%	70.6%	71.3%
	Black or African American	12.7%	11.7%	11.3%
	Asian & Pacific Islander	11.2%	11.1%	10.3%
	Other Races	5.3%	6.6%	7.1%
	Hispanic or Latino Population	16.7%	20.8%	20.3%
	Non Hispanic or Latino Population	83.3%	79.2%	79.7%

This report was produced using data from private and government sources deemed to be reliable and is herein provided without representation or warranty.