

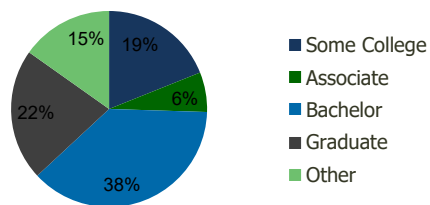
1396-Preston Lebanon Crossing Frisco, TX	1.00 Mile Radius	3.00 Mile Radius	5.00 Mile Radius	10.00 Mile Radius
---	---------------------	---------------------	---------------------	----------------------

Demographics (2018)

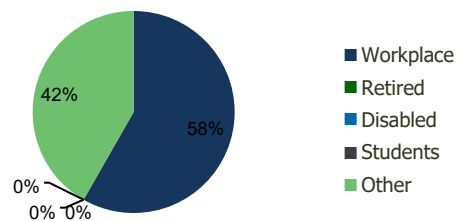
Current Population	12,958	105,667	278,074	991,965
Total Daytime Pop	16,118	143,249	328,639	955,308
Workplace Pop	7,986	83,451	182,022	428,263
Average Household Income	\$119,336	\$128,899	\$136,873	\$119,624
Median Household Income	\$99,499	\$103,286	\$110,799	\$92,920
Total Housing Units	4,852	40,708	100,736	368,640
Median Home Value	\$351,886	\$392,074	\$428,289	\$369,358
Bachelors Degree	39.0%	37.6%	38.3%	34.7%
Graduate Degree	16.3%	21.7%	23.8%	19.3%

Projections (2023)

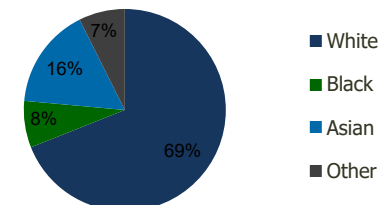
Projected Population	15,685	124,777	318,837	1,123,046
Projected 5 Year Pop Growth	3.9%	3.4%	2.8%	2.5%
Projected Households	5,896	48,375	115,534	414,358
Projected 5 Year Household Growth	4.0%	3.5%	2.8%	2.4%



Education (3-Mile)



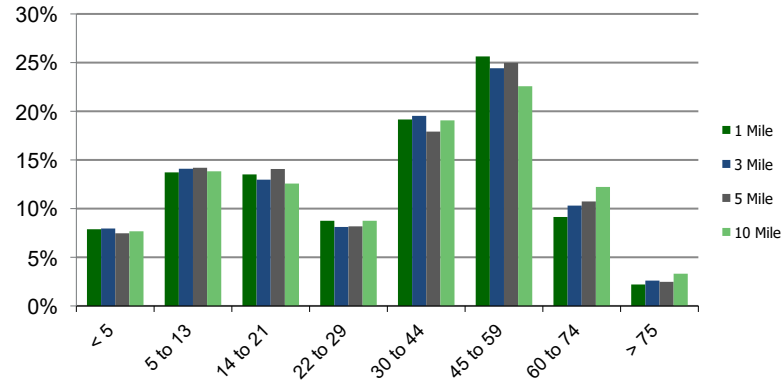
Daytime Population (3-Mile)



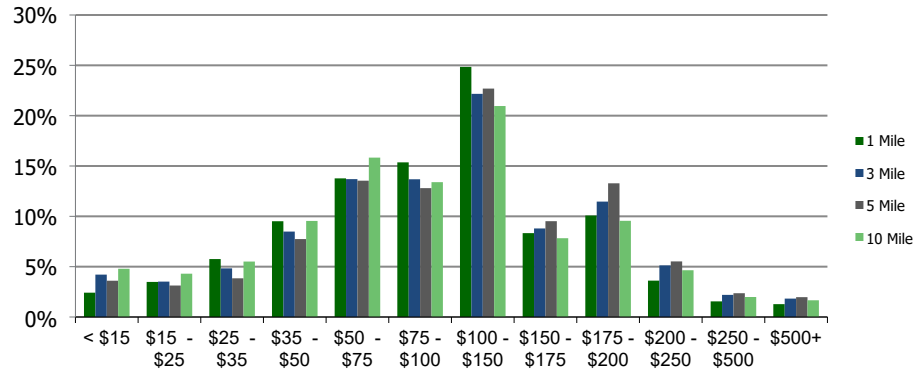
Ethnicity (3-Mile)

This report was produced using data from private and government sources deemed to be reliable and is herein provided without representation or warranty.

Population by Age Range



Household Income by Income Range (\$000)



1396-Preston Lebanon Crossing Frisco, TX

1.00 Mile
Radius

3.00 Mile
Radius

5.00 Mile
Radius

10.00 Mile
Radius

	1.00 Mile Radius	3.00 Mile Radius	5.00 Mile Radius	10.00 Mile Radius
Population				
Current Estimated Population	12,958	105,667	278,074	991,965
2010 Census Population	9,459	76,876	208,307	749,643
2000 Census Population	5,286	38,307	103,889	468,619
Historical Annual Growth 2000 to 2010	5.99%	7.21%	7.20%	4.81%
Estimated Annual Growth 2010 to 2012	3.66%	3.70%	3.36%	3.25%
Projected Annual Growth 2012 to 2018	3.89%	3.38%	2.77%	2.51%
Households				
Current Estimated Households	4,852	40,708	100,736	368,640
2010 Census Households	3,521	29,055	75,279	282,328
2000 Census Households	1,883	13,643	36,757	179,462
Historical Annual Growth 2000 to 2010	6.5%	7.9%	7.4%	4.6%
Estimated Annual Growth 2010 to 2012	3.7%	3.9%	3.4%	3.1%
Projected Annual Growth 2012 to 2018	4.0%	3.5%	2.8%	2.4%
Population per Household	2.7	2.6	2.8	2.7
Ethnicity				
White	73.4%	69.0%	67.4%	70.0%
Black or African American	6.7%	7.5%	7.5%	9.6%
Asian & Pacific Islander	13.1%	16.2%	18.8%	12.8%
Other Races	6.8%	7.4%	6.3%	7.7%
Hispanic or Latino Population	14.3%	13.5%	11.1%	14.4%
Non Hispanic or Latino Population	85.7%	86.5%	88.9%	85.6%

This report was produced using data from private and government sources deemed to be reliable and is herein provided without representation or warranty.