

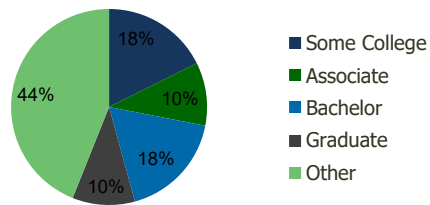
105450-Home Depot Plaza Copliague, NY	1.00 Mile Radius	3.00 Mile Radius	5.00 Mile Radius	10.00 Mile Radius
--	---------------------	---------------------	---------------------	----------------------

Demographics (2019)

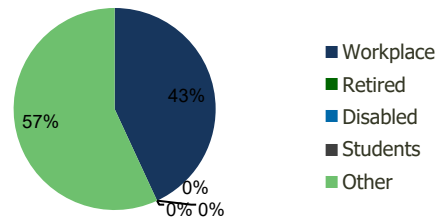
Current Population	23,031	151,410	299,323	890,589
Total Daytime Pop	24,292	139,506	294,924	975,679
Workplace Pop	9,989	60,125	131,563	476,277
Average Household Income	\$93,263	\$110,583	\$121,398	\$131,797
Median Household Income	\$75,555	\$93,111	\$100,941	\$107,332
Total Housing Units	6,557	50,687	100,861	290,057
Median Home Value	\$441,629	\$503,041	\$548,790	\$581,828
Bachelors Degree	13.2%	17.7%	19.8%	21.4%
Graduate Degree	6.5%	10.3%	12.6%	16.0%

Projections (2023)

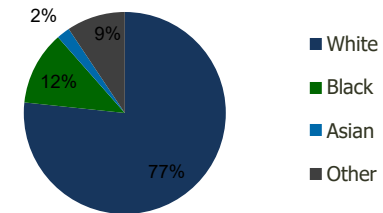
Projected Population	23,532	153,445	302,321	896,241
Projected 5 Year Pop Growth	0.4%	0.3%	0.2%	0.1%
Projected Households	6,714	51,397	101,911	291,956
Projected 5 Year Household Growth	0.5%	0.3%	0.2%	0.1%



Education (3-Mile)



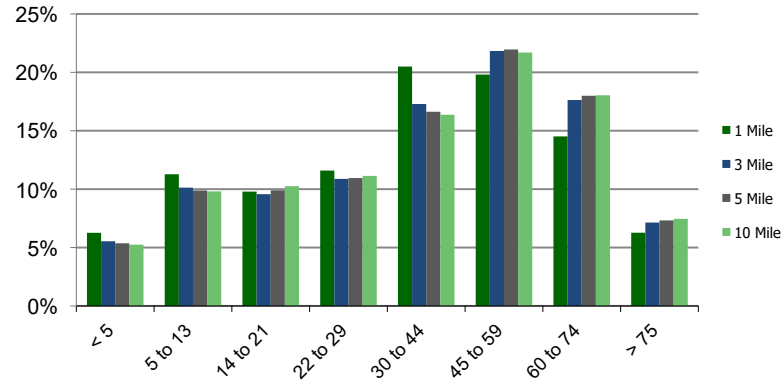
Daytime Population (3-Mile)



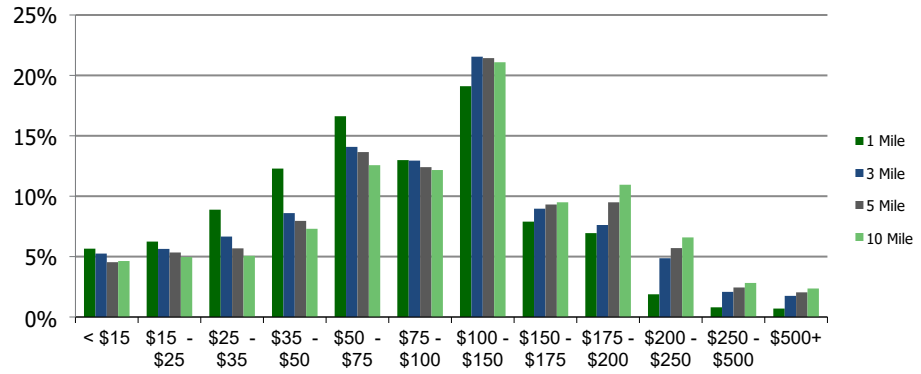
Ethnicity (3-Mile)

This report was produced using data from private and government sources deemed to be reliable and is herein provided without representation or warranty.

Population by Age Range



Household Income by Income Range (\$000)



105450-Home Depot Plaza Copiague, NY	1.00 Mile Radius	3.00 Mile Radius	5.00 Mile Radius	10.00 Mile Radius
--	-------------------------	-------------------------	-------------------------	--------------------------

Population	Current Estimated Population	23,031	151,410	299,323	890,589
	2010 Census Population	22,806	152,195	299,782	889,083
	2000 Census Population	20,588	151,880	302,095	882,943
	Historical Annual Growth 2000 to 2010	1.03%	0.02%	-0.08%	0.07%
	Estimated Annual Growth 2010 to 2012	0.10%	-0.05%	-0.02%	0.02%
	Projected Annual Growth 2012 to 2019	0.43%	0.27%	0.20%	0.13%
Households	Current Estimated Households	6,557	50,687	100,861	290,057
	2010 Census Households	6,484	50,959	100,906	289,382
	2000 Census Households	5,918	49,540	99,418	284,531
	Historical Annual Growth 2000 to 2010	0.9%	0.3%	0.1%	0.2%
	Estimated Annual Growth 2010 to 2012	0.1%	-0.1%	0.0%	0.0%
	Projected Annual Growth 2012 to 2019	0.5%	0.3%	0.2%	0.1%
	Population per Household	3.4	3.0	2.9	3.0
Ethnicity	White	46.1%	76.7%	80.9%	75.1%
	Black or African American	30.3%	11.8%	9.6%	10.3%
	Asian & Pacific Islander	1.9%	2.1%	2.5%	5.9%
	Other Races	21.8%	9.4%	7.0%	8.8%
	Hispanic or Latino Population	38.4%	17.7%	13.8%	16.5%
	Non Hispanic or Latino Population	61.6%	82.3%	86.2%	83.5%

This report was produced using data from private and government sources deemed to be reliable and is herein provided without representation or warranty.