

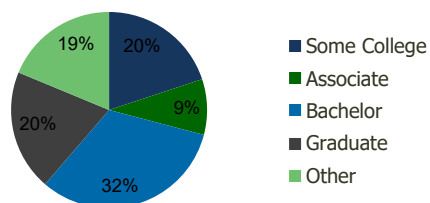
1604-Black Mountain Village San Diego, CA	1.00 Mile Radius	3.00 Mile Radius	5.00 Mile Radius	10.00 Mile Radius
--	---------------------	---------------------	---------------------	----------------------

Demographics (2018)

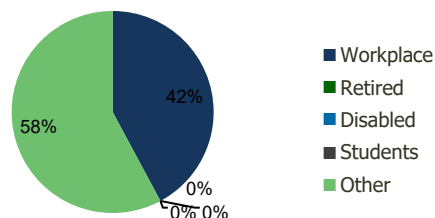
Current Population	35,375	132,145	209,927	776,637
Total Daytime Pop	45,804	146,548	300,909	1,145,672
Workplace Pop	9,410	61,772	161,934	574,427
Average Household Income	\$101,635	\$120,519	\$132,236	\$124,679
Median Household Income	\$88,418	\$102,223	\$109,212	\$95,862
Total Housing Units	12,230	44,140	69,705	290,788
Median Home Value	\$681,374	\$846,329	\$960,811	\$945,093
Bachelors Degree	31.2%	32.2%	32.8%	30.9%
Graduate Degree	14.2%	19.9%	23.3%	24.6%

Projections (2023)

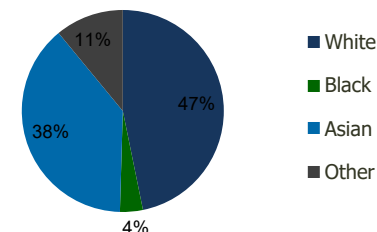
Projected Population	37,669	137,531	218,990	814,966
Projected 5 Year Pop Growth	1.3%	0.8%	0.8%	1.0%
Projected Households	13,004	45,948	72,738	305,743
Projected 5 Year Household Growth	1.2%	0.8%	0.9%	1.0%



Education (3-Mile)



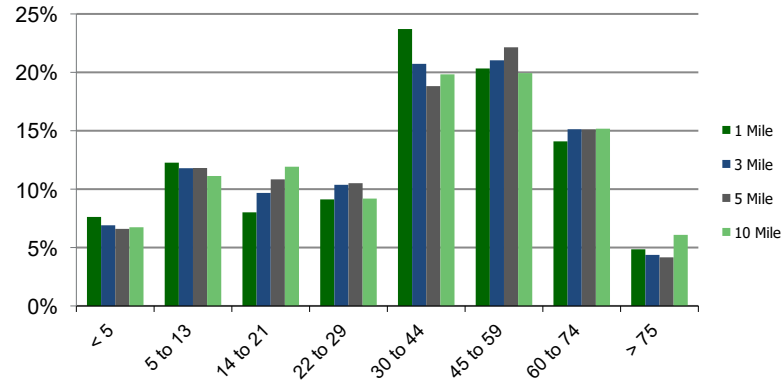
Daytime Population (3-Mile)



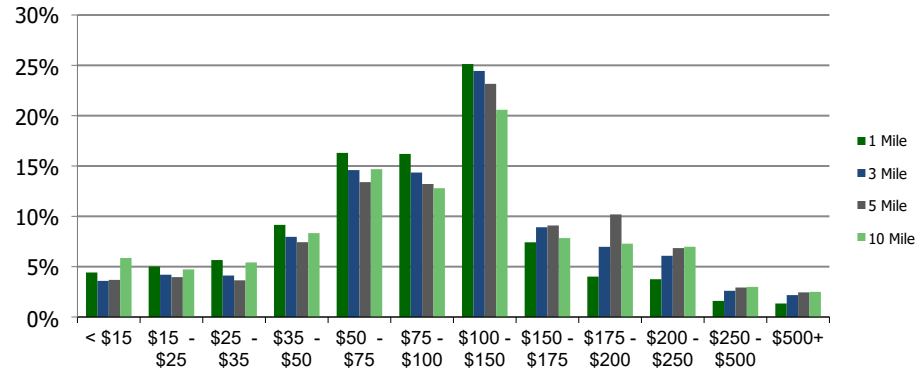
Ethnicity (3-Mile)

This report was produced using data from private and government sources deemed to be reliable and is herein provided without representation or warranty.

Population by Age Range



Household Income by Income Range (\$000)



1604-Black Mountain Village San Diego, CA	1.00 Mile Radius	3.00 Mile Radius	5.00 Mile Radius	10.00 Mile Radius
---	-------------------------	-------------------------	-------------------------	--------------------------

Population	Current Estimated Population	35,375	132,145	209,927	776,637
	2010 Census Population	30,563	121,066	190,245	697,587
	2000 Census Population	28,022	116,916	172,796	627,206
	Historical Annual Growth 2000 to 2010	0.87%	0.35%	0.97%	1.07%
	Estimated Annual Growth 2010 to 2012	1.69%	1.01%	1.13%	1.23%
	Projected Annual Growth 2012 to 2018	1.26%	0.80%	0.85%	0.97%
Households	Current Estimated Households	12,230	44,140	69,705	290,788
	2010 Census Households	10,610	40,414	63,089	259,755
	2000 Census Households	9,657	38,440	56,332	234,462
	Historical Annual Growth 2000 to 2010	0.9%	0.5%	1.1%	1.0%
	Estimated Annual Growth 2010 to 2012	1.6%	1.0%	1.1%	1.3%
	Projected Annual Growth 2012 to 2018	1.2%	0.8%	0.9%	1.0%
	Population per Household	2.9	2.9	3.0	2.6
Ethnicity	White	38.1%	46.8%	51.8%	65.0%
	Black or African American	5.0%	3.7%	3.1%	3.0%
	Asian & Pacific Islander	44.9%	38.6%	34.7%	22.0%
	Other Races	12.0%	11.0%	10.3%	10.1%
	Hispanic or Latino Population	12.7%	12.2%	12.2%	13.8%
	Non Hispanic or Latino Population	87.3%	87.8%	87.8%	86.2%

This report was produced using data from private and government sources deemed to be reliable and is herein provided without representation or warranty.