

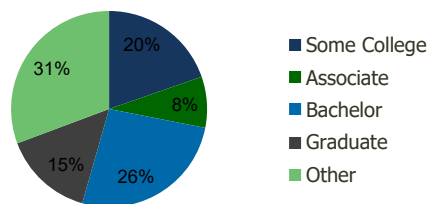
114680-Monterey Plaza San Jose, CA	1.00 Mile Radius	3.00 Mile Radius	5.00 Mile Radius	10.00 Mile Radius
---------------------------------------	---------------------	---------------------	---------------------	----------------------

Demographics (2021)

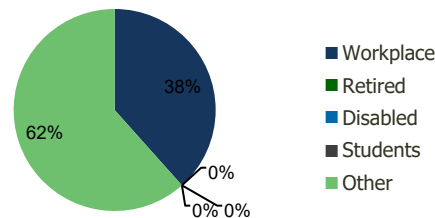
Current Population	27,391	155,549	359,819	979,598
Total Daytime Pop	25,978	125,742	301,623	934,736
Workplace Pop	15,316	48,278	95,732	353,303
Average Household Income	\$124,151	\$152,209	\$154,234	\$152,183
Median Household Income	\$97,967	\$121,308	\$121,141	\$115,522
Total Housing Units	8,208	47,372	111,118	315,675
Median Home Value	\$721,254	\$869,773	\$887,763	\$922,297
Bachelors Degree	23.9%	26.3%	26.1%	25.3%
Graduate Degree	8.9%	14.9%	16.5%	16.5%

Projections (2026)

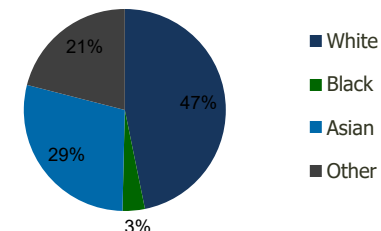
Projected Population	28,809	158,586	362,678	989,497
Projected 5 Year Pop Growth	1.0%	0.4%	0.2%	0.2%
Projected Households	8,672	48,384	112,143	319,958
Projected 5 Year Household Growth	1.1%	0.4%	0.2%	0.3%



Education (3-Mile)



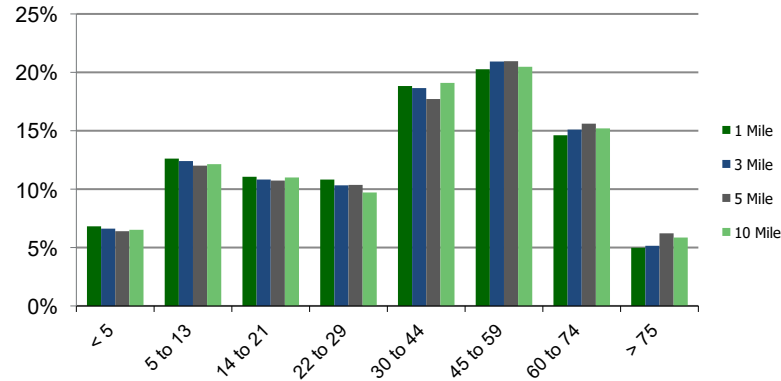
Daytime Population (3-Mile)



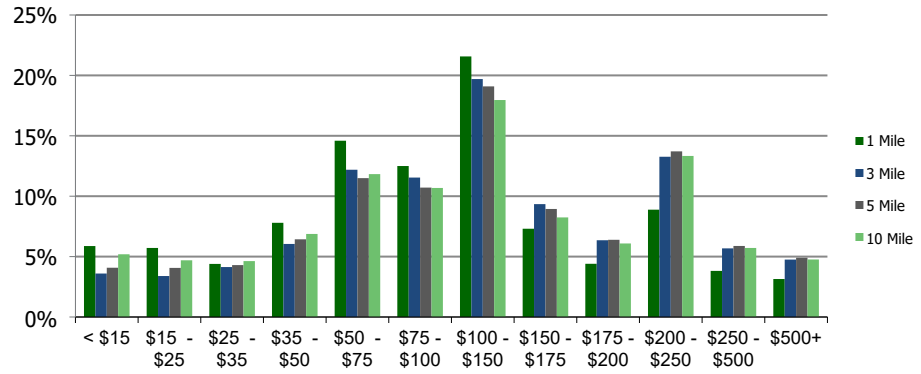
Ethnicity (3-Mile)

This report was produced using data from private and government sources deemed to be reliable and is herein provided without representation or warranty.

Population by Age Range



Household Income by Income Range (\$000)



114680-Monterey Plaza San Jose, CA		1.00 Mile Radius	3.00 Mile Radius	5.00 Mile Radius	10.00 Mile Radius
--	--	------------------	------------------	------------------	-------------------

Population	Current Estimated Population	27,391	155,549	359,819	979,598
	2010 Census Population	22,696	144,246	337,649	917,155
	2000 Census Population	22,536	137,386	315,970	879,717
	Historical Annual Growth 2000 to 2010	0.07%	0.49%	0.67%	0.42%
	Estimated Annual Growth 2010 to 2020	1.61%	0.64%	0.54%	0.56%
	Projected Annual Growth 2020 to 2025	1.02%	0.39%	0.16%	0.20%
Households	Current Estimated Households	8,208	47,372	111,118	315,675
	2010 Census Households	6,720	43,554	103,887	293,056
	2000 Census Households	6,861	41,606	96,100	275,003
	Historical Annual Growth 2000 to 2010	-0.2%	0.5%	0.8%	0.6%
	Estimated Annual Growth 2010 to 2020	1.7%	0.7%	0.6%	0.6%
	Projected Annual Growth 2020 to 2025	1.1%	0.4%	0.2%	0.3%
	Population per Household	3.3	3.3	3.2	3.1
Ethnicity	White	42.0%	46.8%	42.6%	45.6%
	Black or African American	4.1%	3.6%	3.2%	3.0%
	Asian & Pacific Islander	29.2%	28.6%	35.7%	28.7%
	Other Races	24.7%	21.0%	18.4%	22.7%
	Hispanic or Latino Population	39.3%	34.4%	29.7%	34.3%
	Non Hispanic or Latino Population	60.7%	65.6%	70.3%	65.7%

This report was produced using data from private and government sources deemed to be reliable and is herein provided without representation or warranty.