

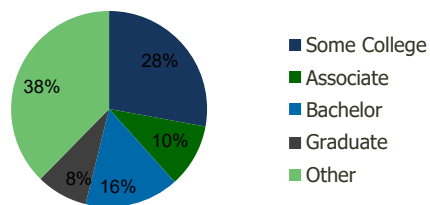
113240-Fulton Market Place Santa Rosa, CA	1.00 Mile Radius	3.00 Mile Radius	5.00 Mile Radius	10.00 Mile Radius
--	---------------------	---------------------	---------------------	----------------------

Demographics (2020)

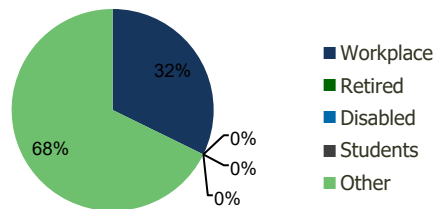
Current Population	9,443	80,934	163,618	324,158
Total Daytime Pop	6,971	127,716	217,828	365,963
Workplace Pop	1,484	41,184	87,114	129,738
Average Household Income	\$104,258	\$94,848	\$97,221	\$103,567
Median Household Income	\$84,357	\$76,590	\$76,445	\$80,215
Total Housing Units	3,581	28,805	59,346	122,016
Median Home Value	\$725,888	\$673,861	\$722,613	\$777,497
Bachelors Degree	17.6%	15.5%	18.3%	20.7%
Graduate Degree	10.5%	8.5%	10.5%	12.5%

Projections (2025)

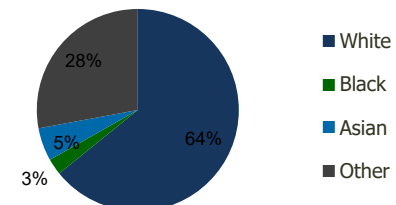
Projected Population	9,616	83,073	167,232	332,057
Projected 5 Year Pop Growth	0.4%	0.5%	0.4%	0.5%
Projected Households	3,647	29,593	60,659	125,077
Projected 5 Year Household Growth	0.4%	0.5%	0.4%	0.5%



Education (3-Mile)



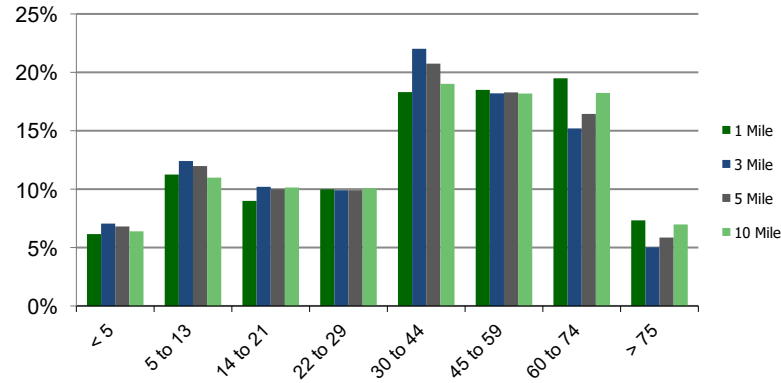
Daytime Population (3-Mile)



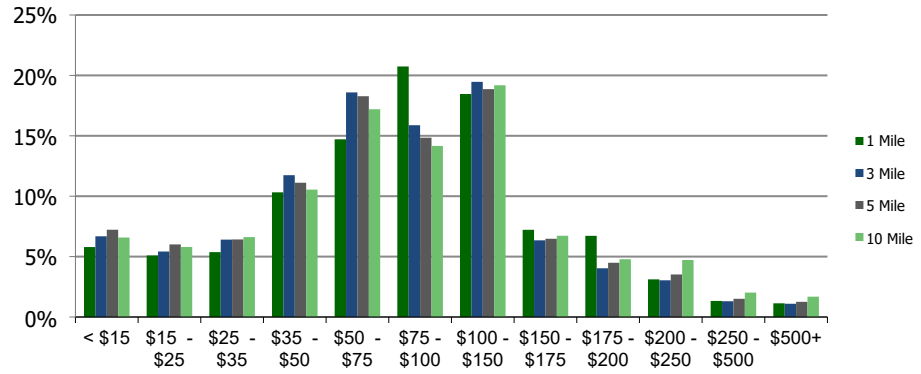
Ethnicity (3-Mile)

This report was produced using data from private and government sources deemed to be reliable and is herein provided without representation or warranty.

Population by Age Range



Household Income by Income Range (\$000)



113240-Fulton Market Place Santa Rosa, CA	1.00 Mile Radius	3.00 Mile Radius	5.00 Mile Radius	10.00 Mile Radius
---	------------------	------------------	------------------	-------------------

Population	Current Estimated Population	9,443	80,934	163,618	324,158
	2010 Census Population	9,172	80,093	162,687	319,405
	2000 Census Population	8,709	72,167	144,553	296,850
	Historical Annual Growth 2000 to 2010	0.52%	1.05%	1.19%	0.74%
	Estimated Annual Growth 2010 to 2020	0.27%	0.10%	0.05%	0.14%
	Projected Annual Growth 2020 to 2025	0.36%	0.52%	0.44%	0.48%
Households	Current Estimated Households	3,581	28,805	59,346	122,016
	2010 Census Households	3,466	28,364	58,858	119,824
	2000 Census Households	3,079	25,696	52,283	110,127
	Historical Annual Growth 2000 to 2010	1.2%	1.0%	1.2%	0.8%
	Estimated Annual Growth 2010 to 2020	0.3%	0.1%	0.1%	0.2%
	Projected Annual Growth 2020 to 2025	0.4%	0.5%	0.4%	0.5%
	Population per Household	2.6	2.8	2.7	2.6
Ethnicity	White	73.0%	64.2%	66.7%	73.3%
	Black or African American	2.2%	2.6%	2.5%	2.0%
	Asian & Pacific Islander	3.7%	5.3%	5.0%	4.5%
	Other Races	21.1%	27.9%	25.8%	20.3%
	Hispanic or Latino Population	26.0%	36.9%	34.4%	27.5%
	Non Hispanic or Latino Population	74.0%	63.1%	65.6%	72.5%

This report was produced using data from private and government sources deemed to be reliable and is herein provided without representation or warranty.