

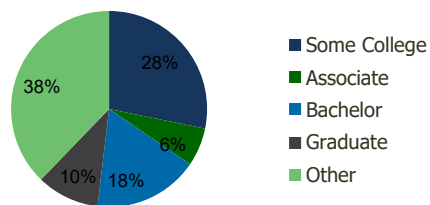
101850-Savannah Centre Savannah, GA	1.00 Mile Radius	3.00 Mile Radius	5.00 Mile Radius	10.00 Mile Radius
--	---------------------	---------------------	---------------------	----------------------

Demographics (2019)

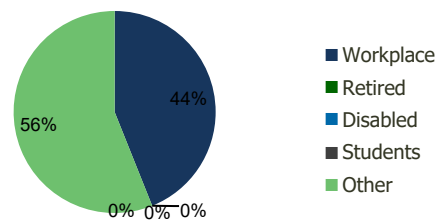
Current Population	5,752	65,096	145,148	244,108
Total Daytime Pop	31,981	106,478	205,126	313,638
Workplace Pop	19,563	46,783	84,336	137,131
Average Household Income	\$63,647	\$62,035	\$64,850	\$75,284
Median Household Income	\$49,997	\$44,800	\$44,094	\$53,011
Total Housing Units	2,504	25,247	56,591	95,415
Median Home Value	\$217,593	\$202,147	\$205,792	\$238,272
Bachelors Degree	24.2%	17.3%	17.9%	20.2%
Graduate Degree	11.8%	10.3%	10.7%	12.6%

Projections (2024)

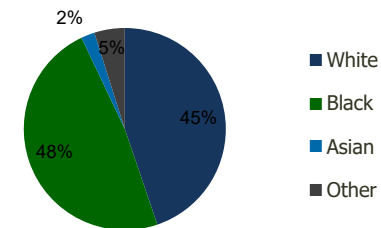
Projected Population	5,847	66,739	149,446	254,907
Projected 5 Year Pop Growth	0.3%	0.5%	0.6%	0.9%
Projected Households	2,547	25,925	58,376	99,757
Projected 5 Year Household Growth	0.3%	0.5%	0.6%	0.9%



Education (3-Mile)



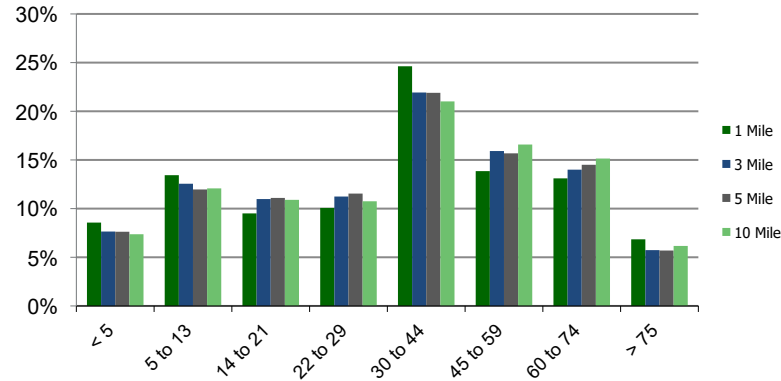
Daytime Population (3-Mile)



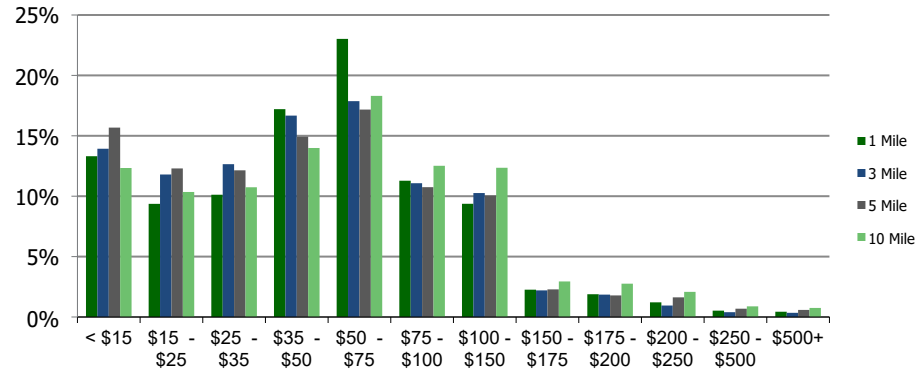
Ethnicity (3-Mile)

This report was produced using data from private and government sources deemed to be reliable and is herein provided without representation or warranty.

Population by Age Range



Household Income by Income Range (\$000)



101850-Savannah Centre
Savannah, GA

1.00 Mile
Radius

3.00 Mile
Radius

5.00 Mile
Radius

10.00 Mile
Radius

	1.00 Mile Radius	3.00 Mile Radius	5.00 Mile Radius	10.00 Mile Radius	
Population	Current Estimated Population	5,752	65,096	145,148	
	2010 Census Population	5,695	64,121	141,597	
	2000 Census Population	6,014	65,783	142,017	
	Historical Annual Growth 2000 to 2010	-0.54%	-0.26%	-0.03%	0.68%
	Estimated Annual Growth 2010 to 2019	0.10%	0.15%	0.25%	0.59%
	Projected Annual Growth 2019 to 2024	0.33%	0.50%	0.59%	0.87%
Households	Current Estimated Households	2,504	25,247	56,591	
	2010 Census Households	2,482	24,798	55,000	
	2000 Census Households	2,538	25,612	55,476	
	Historical Annual Growth 2000 to 2010	-0.2%	-0.3%	-0.1%	0.7%
	Estimated Annual Growth 2010 to 2019	0.1%	0.2%	0.3%	0.6%
	Projected Annual Growth 2019 to 2024	0.3%	0.5%	0.6%	0.9%
	Population per Household	2.2	2.4	2.4	2.4
Ethnicity	White	58.4%	44.8%	42.5%	50.9%
	Black or African American	31.8%	48.2%	51.2%	41.9%
	Asian & Pacific Islander	3.5%	2.2%	2.0%	2.5%
	Other Races	6.3%	4.9%	4.3%	4.7%
	Hispanic or Latino Population	6.4%	5.5%	5.0%	5.7%
	Non Hispanic or Latino Population	93.6%	94.5%	95.0%	94.3%

This report was produced using data from private and government sources deemed to be reliable and is herein provided without representation or warranty.