

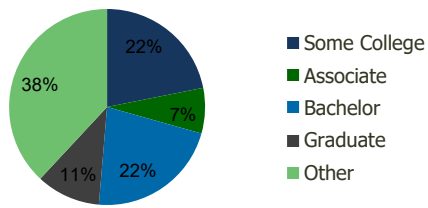
113360-Plaza Di Northridge Northridge, CA	1.00 Mile Radius	3.00 Mile Radius	5.00 Mile Radius	10.00 Mile Radius
--	---------------------	---------------------	---------------------	----------------------

Demographics (2019)

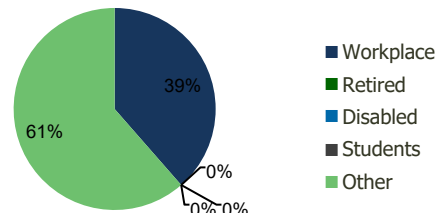
Current Population	14,768	213,479	473,504	1,348,170
Total Daytime Pop	23,840	261,921	551,512	1,409,472
Workplace Pop	13,882	100,975	210,822	555,502
Average Household Income	\$109,121	\$97,449	\$98,868	\$101,477
Median Household Income	\$85,279	\$73,276	\$75,327	\$71,786
Total Housing Units	5,116	69,864	158,645	434,014
Median Home Value	\$938,910	\$853,917	\$844,151	\$831,677
Bachelors Degree	28.1%	22.0%	22.6%	20.7%
Graduate Degree	12.4%	10.6%	10.9%	10.3%

Projections (2024)

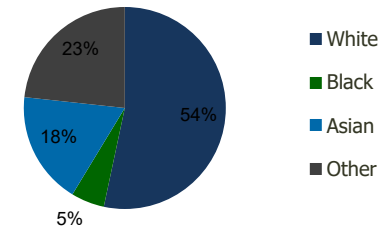
Projected Population	15,421	222,791	493,342	1,397,549
Projected 5 Year Pop Growth	0.9%	0.9%	0.8%	0.7%
Projected Households	5,342	73,004	165,497	450,443
Projected 5 Year Household Growth	0.9%	0.9%	0.8%	0.7%



Education (3-Mile)



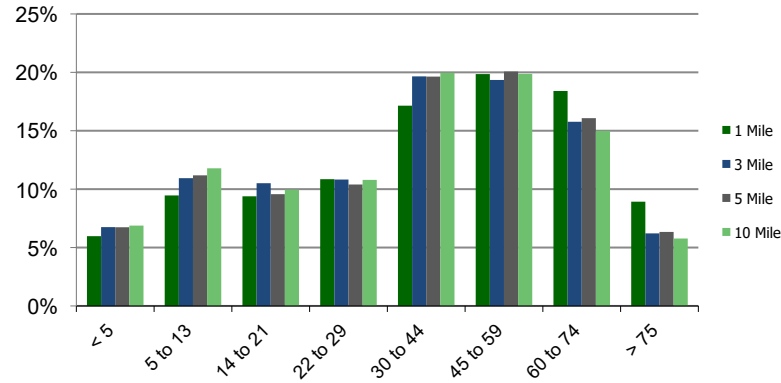
Daytime Population (3-Mile)



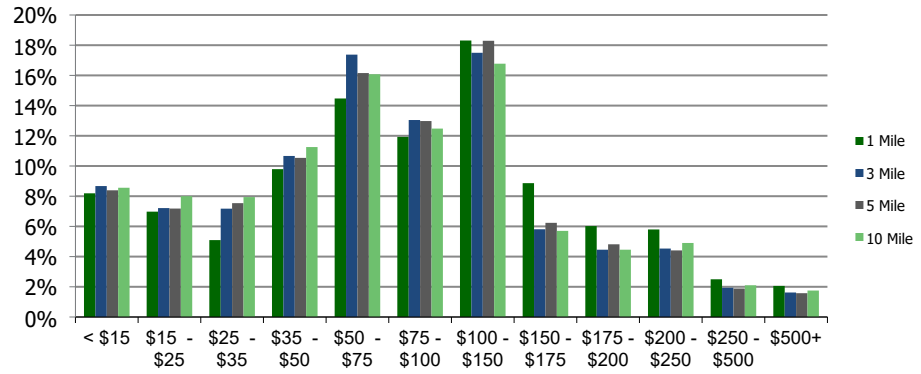
Ethnicity (3-Mile)

This report was produced using data from private and government sources deemed to be reliable and is herein provided without representation or warranty.

Population by Age Range



Household Income by Income Range (\$000)



	1.00 Mile Radius	3.00 Mile Radius	5.00 Mile Radius	10.00 Mile Radius
--	------------------	------------------	------------------	-------------------

	1.00 Mile Radius	3.00 Mile Radius	5.00 Mile Radius	10.00 Mile Radius
Population				
Current Estimated Population	14,768	213,479	473,504	1,348,170
2010 Census Population	14,149	203,637	452,687	1,302,946
2000 Census Population	12,852	188,349	418,349	1,225,134
Historical Annual Growth 2000 to 2010	0.97%	0.78%	0.79%	0.62%
Estimated Annual Growth 2010 to 2019	0.44%	0.49%	0.46%	0.35%
Projected Annual Growth 2019 to 2024	0.87%	0.86%	0.82%	0.72%
Households				
Current Estimated Households	5,116	69,864	158,645	434,014
2010 Census Households	4,903	66,590	151,330	418,355
2000 Census Households	4,538	64,016	143,533	400,222
Historical Annual Growth 2000 to 2010	0.8%	0.4%	0.5%	0.4%
Estimated Annual Growth 2010 to 2019	0.4%	0.5%	0.5%	0.4%
Projected Annual Growth 2019 to 2024	0.9%	0.9%	0.8%	0.7%
Population per Household	2.8	3.0	2.9	3.1
Ethnicity				
White	62.3%	53.3%	56.9%	59.2%
Black or African American	3.8%	5.3%	4.8%	4.0%
Asian & Pacific Islander	17.5%	18.0%	15.9%	10.7%
Other Races	16.4%	23.3%	22.4%	26.1%
Hispanic or Latino Population	27.0%	38.5%	37.6%	46.8%
Non Hispanic or Latino Population	73.0%	61.5%	62.4%	53.2%

This report was produced using data from private and government sources deemed to be reliable and is herein provided without representation or warranty.