

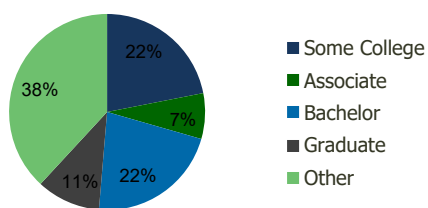
1336-Plaza Di Northridge Northridge,CA	1.00 Mile Radius	3.00 Mile Radius	5.00 Mile Radius	10.00 Mile Radius
---	---------------------	---------------------	---------------------	----------------------

Demographics (2018)

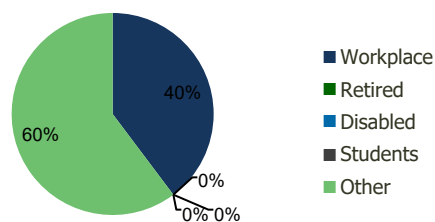
Current Population	14,742	212,826	470,449	1,347,075
Total Daytime Pop	24,343	262,589	548,304	1,409,017
Workplace Pop	14,245	104,338	212,328	563,238
Average Household Income	\$102,583	\$92,431	\$94,316	\$97,078
Median Household Income	\$81,246	\$70,087	\$71,460	\$68,302
Total Housing Units	5,104	69,574	157,420	433,880
Median Home Value	\$920,970	\$821,176	\$808,596	\$798,371
Bachelors Degree	28.0%	21.9%	22.5%	20.8%
Graduate Degree	12.4%	10.5%	10.8%	10.3%

Projections (2023)

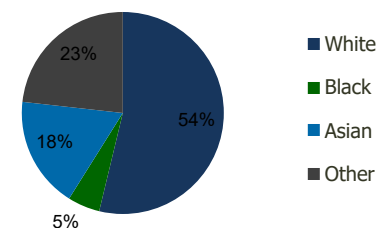
Projected Population	15,425	222,661	490,481	1,397,562
Projected 5 Year Pop Growth	0.9%	0.9%	0.8%	0.7%
Projected Households	5,340	72,864	164,297	450,765
Projected 5 Year Household Growth	0.9%	0.9%	0.9%	0.8%



Education (3-Mile)



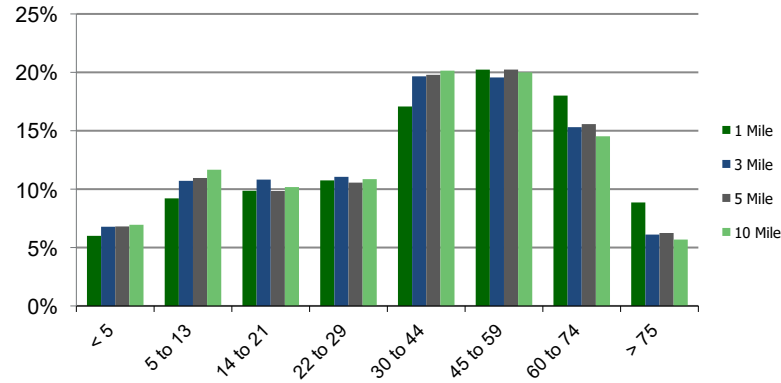
Daytime Population (3-Mile)



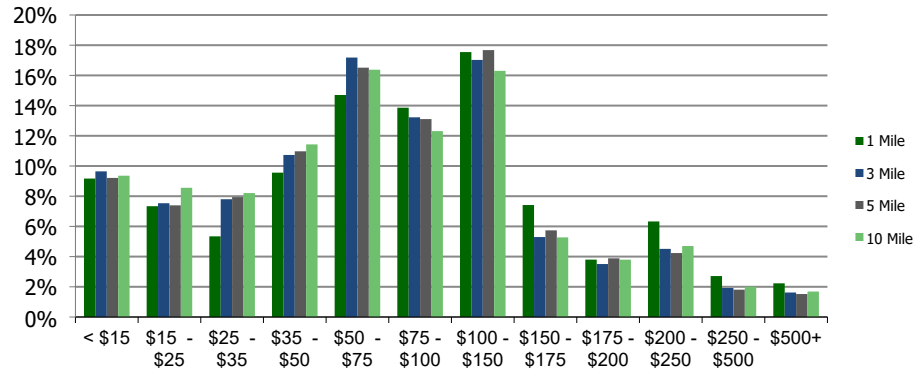
Ethnicity (3-Mile)

This report was produced using data from private and government sources deemed to be reliable and is herein provided without representation or warranty.

Population by Age Range



Household Income by Income Range (\$000)



	1.00 Mile Radius	3.00 Mile Radius	5.00 Mile Radius	10.00 Mile Radius
1336-Plaza Di Northridge Northridge,CA				

Population	Current Estimated Population	14,742	212,826	470,449	1,347,075
	2010 Census Population	14,149	203,637	453,346	1,307,281
	2000 Census Population	12,852	188,349	418,952	1,229,005
	Historical Annual Growth 2000 to 2010	0.97%	0.78%	0.79%	0.62%
	Estimated Annual Growth 2010 to 2012	0.47%	0.51%	0.42%	0.34%
	Projected Annual Growth 2012 to 2018	0.91%	0.91%	0.84%	0.74%
Households	Current Estimated Households	5,104	69,574	157,420	433,880
	2010 Census Households	4,903	66,590	151,482	419,916
	2000 Census Households	4,538	64,016	143,645	401,642
	Historical Annual Growth 2000 to 2010	0.8%	0.4%	0.5%	0.4%
	Estimated Annual Growth 2010 to 2012	0.5%	0.5%	0.4%	0.4%
	Projected Annual Growth 2012 to 2018	0.9%	0.9%	0.9%	0.8%
	Population per Household	2.8	3.0	2.9	3.1
Ethnicity	White	62.6%	53.8%	57.3%	59.5%
	Black or African American	3.7%	5.2%	4.6%	4.0%
	Asian & Pacific Islander	17.3%	17.8%	15.7%	10.7%
	Other Races	16.4%	23.2%	22.5%	25.9%
	Hispanic or Latino Population	27.6%	39.0%	38.0%	46.8%
	Non Hispanic or Latino Population	72.4%	61.0%	62.0%	53.2%

This report was produced using data from private and government sources deemed to be reliable and is herein provided without representation or warranty.