

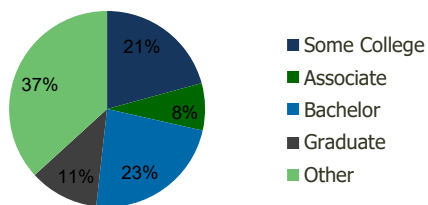
113360-Plaza Di Northridge Northridge, CA	1.00 Mile Radius	3.00 Mile Radius	5.00 Mile Radius	10.00 Mile Radius
--	---------------------	---------------------	---------------------	----------------------

Demographics (2021)

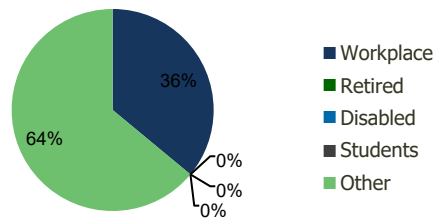
Current Population	14,817	211,212	471,457	1,339,213
Total Daytime Pop	22,448	247,988	524,559	1,344,446
Workplace Pop	12,246	89,294	187,151	493,178
Average Household Income	\$114,769	\$103,371	\$105,982	\$108,865
Median Household Income	\$88,613	\$77,952	\$80,855	\$77,806
Total Housing Units	5,133	69,051	157,877	430,726
Median Home Value	\$925,537	\$859,836	\$853,473	\$834,223
Bachelors Degree	26.8%	23.2%	23.5%	21.4%
Graduate Degree	14.2%	11.5%	11.6%	10.8%

Projections (2026)

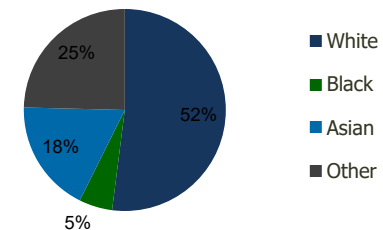
Projected Population	15,332	217,401	485,591	1,371,965
Projected 5 Year Pop Growth	0.7%	0.6%	0.6%	0.5%
Projected Households	5,309	71,143	162,798	441,677
Projected 5 Year Household Growth	0.7%	0.6%	0.6%	0.5%



Education (3-Mile)



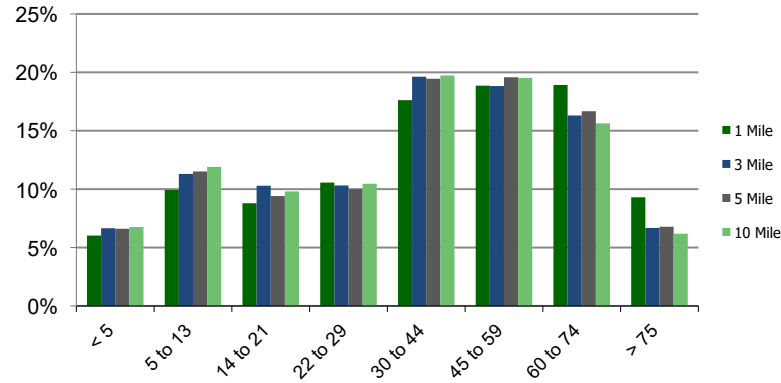
Daytime Population (3-Mile)



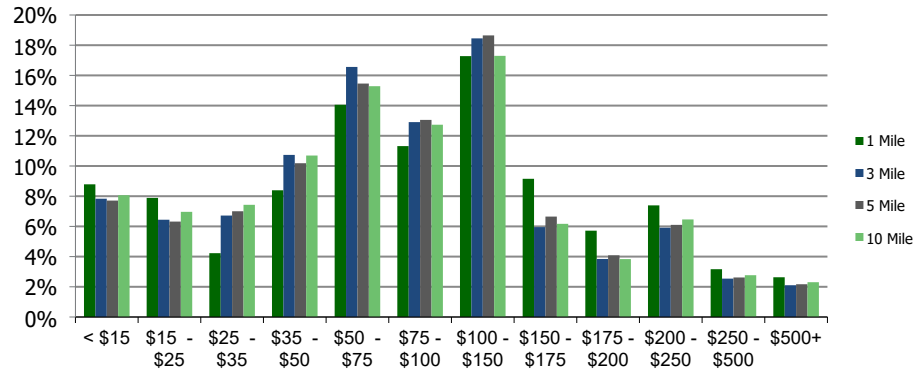
Ethnicity (3-Mile)

This report was produced using data from private and government sources deemed to be reliable and is herein provided without representation or warranty.

Population by Age Range



Household Income by Income Range (\$000)



113360-Plaza Di Northridge
Northridge, CA

1.00 Mile
Radius

3.00 Mile
Radius

5.00 Mile
Radius

10.00 Mile
Radius

	1.00 Mile Radius	3.00 Mile Radius	5.00 Mile Radius	10.00 Mile Radius
Population	Current Estimated Population	14,817	211,212	471,457
	2010 Census Population	14,149	203,637	452,687
	2000 Census Population	12,852	188,349	418,349
	Historical Annual Growth 2000 to 2010	0.97%	0.78%	0.79%
	Estimated Annual Growth 2010 to 2020	0.39%	0.31%	0.35%
	Projected Annual Growth 2020 to 2025	0.69%	0.58%	0.59%
Households	Current Estimated Households	5,133	69,051	157,877
	2010 Census Households	4,903	66,590	151,330
	2000 Census Households	4,538	64,016	143,533
	Historical Annual Growth 2000 to 2010	0.8%	0.4%	0.5%
	Estimated Annual Growth 2010 to 2020	0.4%	0.3%	0.4%
	Projected Annual Growth 2020 to 2025	0.7%	0.6%	0.6%
	Population per Household	2.8	3.0	2.9
Ethnicity	White	62.3%	52.0%	55.8%
	Black or African American	3.5%	5.3%	4.8%
	Asian & Pacific Islander	16.8%	18.0%	16.0%
	Other Races	17.3%	24.6%	23.4%
	Hispanic or Latino Population	27.5%	39.2%	38.1%
	Non Hispanic or Latino Population	72.5%	60.8%	61.9%

This report was produced using data from private and government sources deemed to be reliable and is herein provided without representation or warranty.