

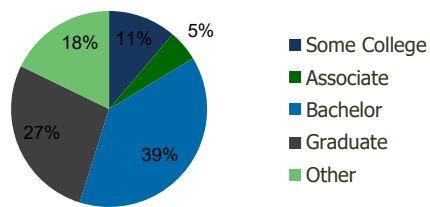
1584-Perimeter Expo Atlanta, GA	1.00 Mile Radius	3.00 Mile Radius	5.00 Mile Radius	10.00 Mile Radius
------------------------------------	---------------------	---------------------	---------------------	----------------------

## Demographics (2018)

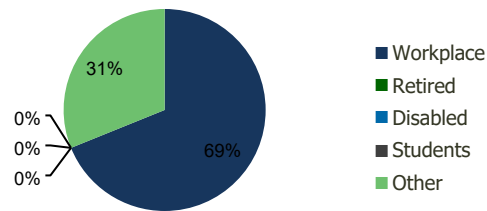
Current Population	14,734	107,451	255,511	1,019,526
Total Daytime Pop	60,539	209,700	388,538	1,486,761
Workplace Pop	49,495	144,439	257,827	972,617
Average Household Income	\$117,806	\$117,650	\$126,851	\$115,434
Median Household Income	\$92,014	\$83,542	\$82,548	\$76,268
Total Housing Units	7,574	49,858	110,897	437,622
Median Home Value	\$571,825	\$556,933	\$579,645	\$465,268
Bachelors Degree	45.6%	38.5%	35.7%	34.2%
Graduate Degree	33.5%	27.3%	25.1%	23.6%

## Projections (2023)

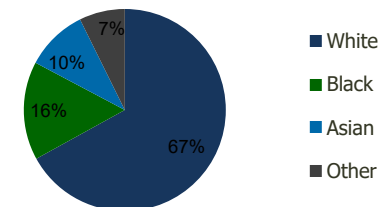
Projected Population	16,046	116,923	273,772	1,097,487
Projected 5 Year Pop Growth	1.7%	1.7%	1.4%	1.5%
Projected Households	8,287	54,400	119,555	474,153
Projected 5 Year Household Growth	1.8%	1.8%	1.5%	1.6%



Education (3-Mile)



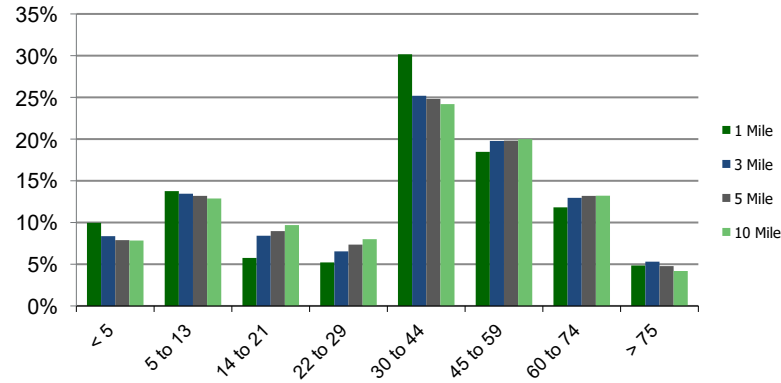
Daytime Population (3-Mile)



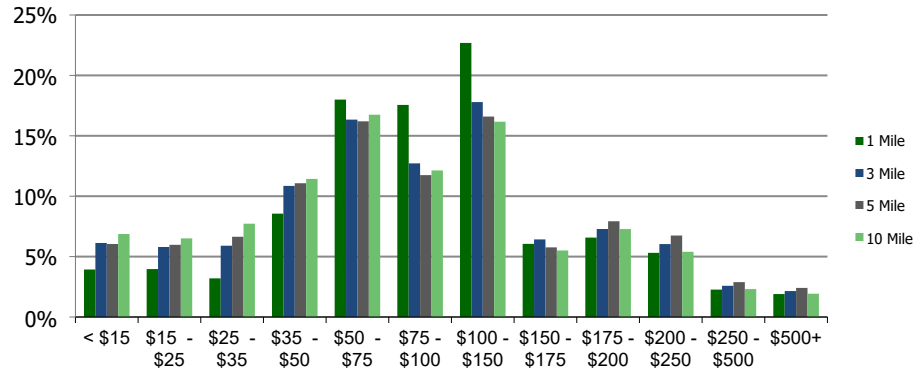
Ethnicity (3-Mile)

This report was produced using data from private and government sources deemed to be reliable and is herein provided without representation or warranty.

**Population by Age Range**



**Household Income by Income Range (\$000)**



**1584-Perimeter Expo**  
Atlanta,GA

1.00 Mile  
Radius

3.00 Mile  
Radius

5.00 Mile  
Radius

10.00 Mile  
Radius

	1.00 Mile Radius	3.00 Mile Radius	5.00 Mile Radius	10.00 Mile Radius
<b>Population</b>	Current Estimated Population	14,734	107,451	255,511
	2010 Census Population	12,364	91,419	225,116
	2000 Census Population	7,156	77,167	206,290
	Historical Annual Growth 2000 to 2010	5.62%	1.71%	0.88%
	Estimated Annual Growth 2010 to 2012	2.02%	1.86%	1.46%
	Projected Annual Growth 2012 to 2018	1.72%	1.70%	1.39%
<b>Households</b>	Current Estimated Households	7,574	49,858	110,897
	2010 Census Households	6,278	42,216	96,436
	2000 Census Households	3,451	34,433	87,376
	Historical Annual Growth 2000 to 2010	6.2%	2.1%	1.0%
	Estimated Annual Growth 2010 to 2012	2.2%	1.9%	1.6%
	Projected Annual Growth 2012 to 2018	1.8%	1.8%	1.5%
	Population per Household	1.9	2.1	2.3
<b>Ethnicity</b>	White	65.4%	67.0%	67.4%
	Black or African American	14.5%	15.8%	14.0%
	Asian & Pacific Islander	16.5%	9.9%	8.0%
	Other Races	3.6%	7.3%	10.6%
	Hispanic or Latino Population	5.3%	12.0%	18.5%
	Non Hispanic or Latino Population	94.7%	88.0%	81.5%

This report was produced using data from private and government sources deemed to be reliable and is herein provided without representation or warranty.