

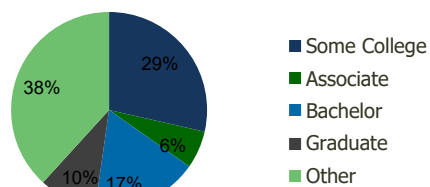
116190-Chatham Plaza Savannah, GA	1.00 Mile Radius	3.00 Mile Radius	5.00 Mile Radius	10.00 Mile Radius
--------------------------------------	---------------------	---------------------	---------------------	----------------------

Demographics (2019)

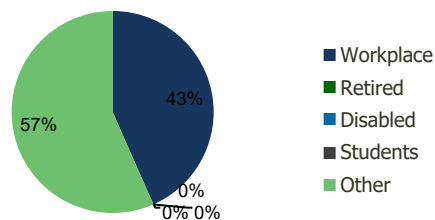
Current Population	5,989	61,279	142,429	245,546
Total Daytime Pop	30,541	106,699	200,754	315,539
Workplace Pop	18,404	46,301	82,592	138,034
Average Household Income	\$55,101	\$59,952	\$64,474	\$75,347
Median Household Income	\$46,201	\$43,937	\$44,019	\$53,105
Total Housing Units	2,541	24,232	55,633	95,932
Median Home Value	\$180,137	\$198,349	\$205,065	\$238,185
Bachelors Degree	19.5%	17.5%	17.8%	20.2%
Graduate Degree	9.6%	9.5%	10.5%	12.6%

Projections (2024)

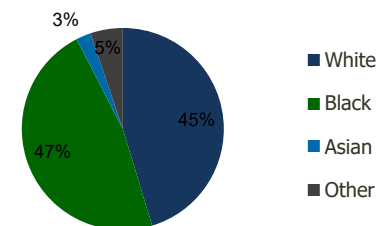
Projected Population	6,083	62,967	146,645	256,547
Projected 5 Year Pop Growth	0.3%	0.5%	0.6%	0.9%
Projected Households	2,582	24,935	57,388	100,348
Projected 5 Year Household Growth	0.3%	0.6%	0.6%	0.9%



Education (3-Mile)



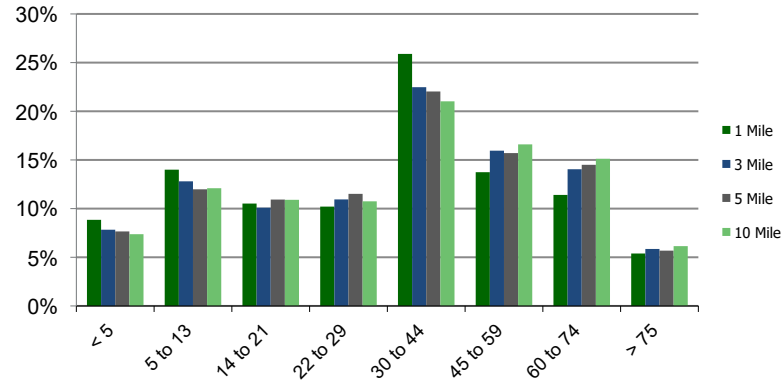
Daytime Population (3-Mile)



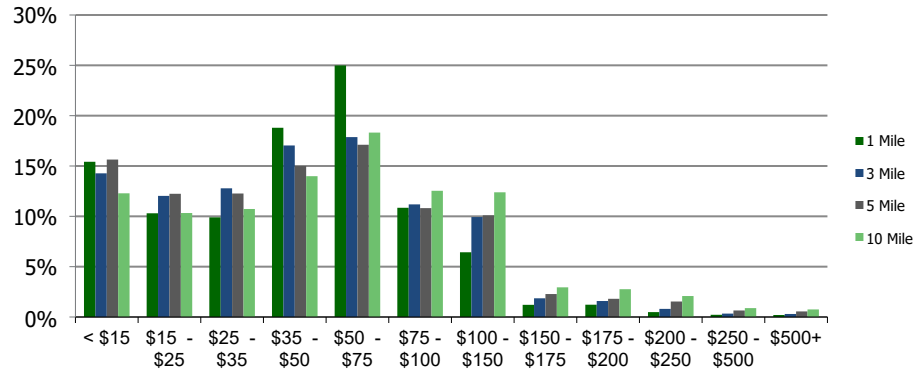
Ethnicity (3-Mile)

This report was produced using data from private and government sources deemed to be reliable and is herein provided without representation or warranty.

Population by Age Range



Household Income by Income Range (\$000)



	116190-Chatham Plaza Savannah, GA	1.00 Mile Radius	3.00 Mile Radius	5.00 Mile Radius	10.00 Mile Radius
--	----------------------------------------------	-----------------------------	-----------------------------	-----------------------------	------------------------------

Population	Current Estimated Population	5,989	61,279	142,429	245,546
	2010 Census Population	5,915	60,121	139,050	231,672
	2000 Census Population	6,188	62,195	138,651	215,796
	Historical Annual Growth 2000 to 2010	-0.45%	-0.34%	0.03%	0.71%
	Estimated Annual Growth 2010 to 2019	0.13%	0.20%	0.25%	0.60%
	Projected Annual Growth 2019 to 2024	0.31%	0.54%	0.59%	0.88%
Households	Current Estimated Households	2,541	24,232	55,633	95,932
	2010 Census Households	2,512	23,708	54,092	90,393
	2000 Census Households	2,552	24,447	54,276	83,841
	Historical Annual Growth 2000 to 2010	-0.2%	-0.3%	0.0%	0.8%
	Estimated Annual Growth 2010 to 2019	0.1%	0.2%	0.3%	0.6%
	Projected Annual Growth 2019 to 2024	0.3%	0.6%	0.6%	0.9%
	Population per Household	2.3	2.4	2.4	2.4
Ethnicity	White	47.7%	45.3%	42.6%	50.9%
	Black or African American	41.4%	47.1%	51.0%	41.8%
	Asian & Pacific Islander	3.4%	2.4%	2.0%	2.5%
	Other Races	7.5%	5.2%	4.4%	4.7%
	Hispanic or Latino Population	7.7%	6.1%	5.0%	5.7%
	Non Hispanic or Latino Population	92.3%	93.9%	95.0%	94.3%

This report was produced using data from private and government sources deemed to be reliable and is herein provided without representation or warranty.